

User Manual

4K30 Video wall controller with 4 HDMI outputs



Version: V22.01

1. Introduction

This TV Wall controller is designed to be a truly capture, AD convert, route, distribute all-format signal to the video wall(LCD displays), while maintaining a true digital signal.

The controller with many different video interfaces, include 2 HDMI inputs with 4K30 resolution and 4 HDMI outputs with 1080P resolution. Supports different Video Wall modes, 1x2, 1x3, 1x4, 2x2 etc, with the 4K input and 1080P output, it can realize the point to point display. Support the 3.5mm audio de-embedded and with volume knob for sound adjustment. This controller can be controlled by remote control and front buttons.

2. Features

- Supports 2 HDMI inputs, resolution up to 4K30
- Supports image 180 degrees rotation(good for the ceiling installation)
- Supports 4 HDMI with 1080P60 resolution outputs
- Supports multiple splicing ways: 2x2, 1x4, 4x1, 1x3 ...
- Supports the splicing edge adjustment
- Supports HDMI 1.4, HDCP compatible
- Supports the IR remote and push-button control

3. Specification

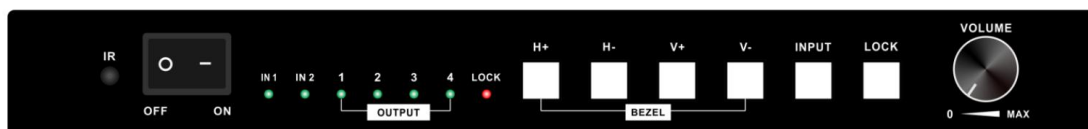
Product name	4K TV wall controller
Control	Front buttons, remote control
Input	2* HDMI(up to 4K30 resolution)
Output	4*HDMI(up to 1080P60)
Resolution	4k30 input and 1080@60Hz output
Display splice mode	2x2, 1x4, 4x1, etc...
Power Supply	DC 12V3A
Power Consumption	10W
Dimension (WxHxD)	240*167*27(mm)/ 9.45*6.58*1.07(inch)
Weight	2.5KG/ 5.5lbs
Operating Temperature	-10°C to 50°C
Storage Temperature	-25°C to 55°C

4. Packing

TV Wall Controller	1	Unit
Power adapter	1	Pcs
Remote control	1	Pcs
Mount ears	1	Pair

5. Panels

5.1 Front Panel



IR: for the IR remote control

POWER: power switch

IN1, IN2: The 2 HDMI inputs indicators

1~4: The 4 HDMI outputs indicators

LOCK: The front buttons lock indicator

H+: For the horizontal bezel increase

H-: For the horizontal bezel decrease

V+: For the vertical bezel increase

V-: For the vertical bezel decrease

INPUT: for the 2 HDMI inputs selection(no auto switch)

LOCK: Press to lock or unlock the front-button functions

VOLUME: for the 3.5mm audio out on back panel volume up/down

5.2 Back Panel



OUTPUT: 4 HDMI outputs to connect to displays

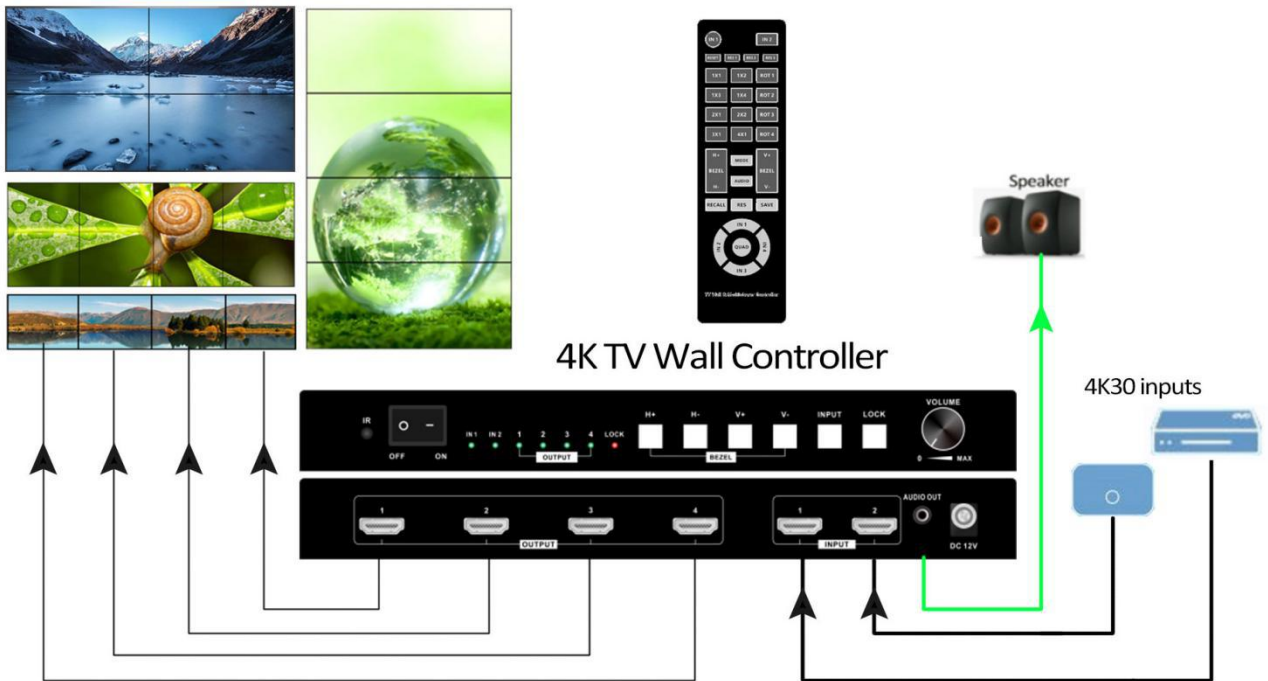
INPUT: 2 HDMI input ports(only one)

AUDIO OUT: for the audio de-embedded

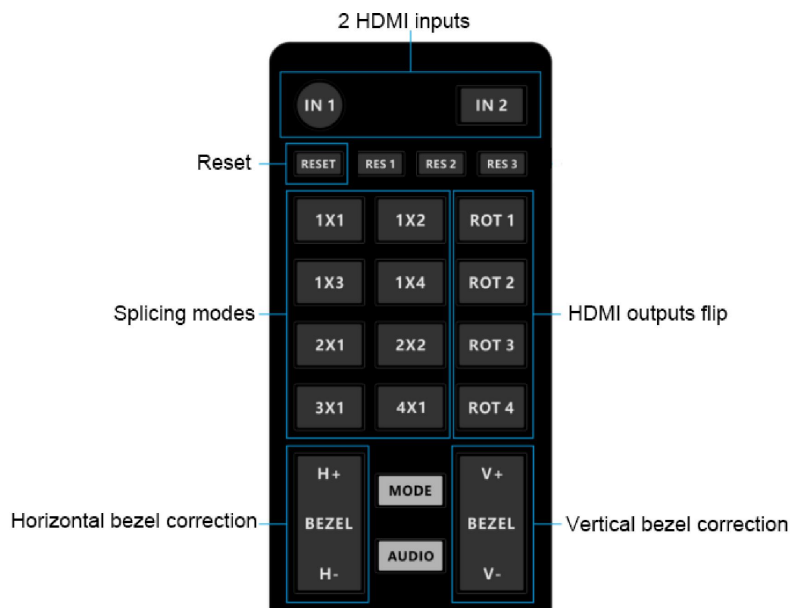
DC 12V: power supply

6. Diagram and control operations

6.1 Connection diagram



6.2 IR remote control



* The other buttons on this remote control is for the HDMI multiviewer

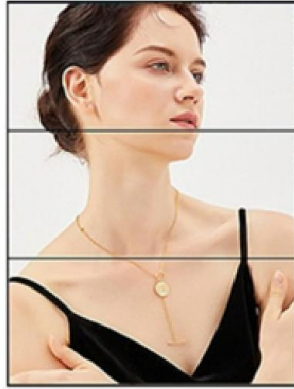
IN1, IN2: when 2 HDMI inputs connected, users can press the IN1 or IN2 to select to output.

RESET: Press to reset when want to reset the bezel correction, output ports flip/rotating.

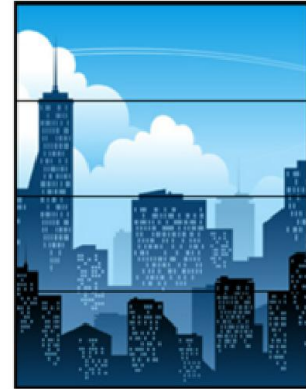
SPLICING MODES: quick setup buttons for users to set the video wall



2x1 mode
(1920x2160)



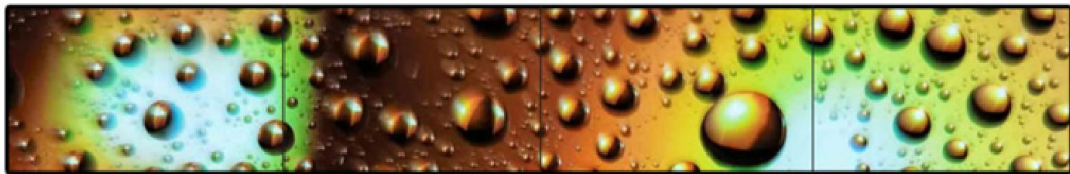
3x1 mode
(1920x3240)



4x1 mode
(1920x4320)



1x3 mode (5760x1080)



1x4 mode, resolution up to 7680x1080

ROT1: For HDMI output 1 flipping, need to press reset button when want the normal display.

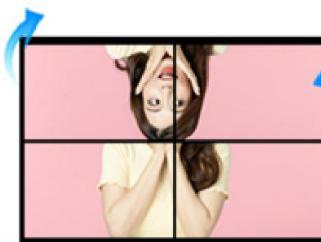
ROT2: For HDMI output 2 flipping, need to press reset button when want the normal display.

ROT3: For HDMI output 3 flipping, need to press reset button when want the normal display.

ROT4: For HDMI output 4 flipping, need to press reset button when want the normal display.



Before Flipping



TV Flipped



Image Flipping

BEZEL H+, H-: For the video wall horizontal bezel corrections(Reset button to

back or 100 hits)

BEZEL V+, V-: For the video wall vertical bezel corrections(Reset button to back or 100 hits)



Before bezel corrections
(image is out of shape)

After bezel corrections
(image is perfect)

7. After-Sales

7.1 Warranty Information

The Company warrants that the process and materials of the product are not defective under normal use and service for 2 (2) years following the date of purchase from the Company or its authorized distributors.

If the product does not work within the guaranteed warranty period, the company will choose and pay for the repair of the defective product or component, the delivery of the equivalent product or component to the user for replacement of the defective item, or refund the payment which users have made.

The replaced product will become the property of the Company.

The replacement product could be new or repaired.

Whichever is longer, any replacement or repaired of the product or component is for a period of ninety (90) days or the remaining period of the initial warranty. The Company shall not be responsible for any software, firmware, information, or memory data contained in, stored in, or integrated with the product repaired by the customer's return, whether or not during the warranty period.

7.2 Warranty limitations and exceptions

Except above limited warranty, if the product is damaged by over usage, incorrectly use, ignore, accident, unusual physical pressure or voltage, unauthorized modification, alteration or services rendered by someone other than the Company or its authorized agent, the company will not have to bear additional obligations. Except using the product properly in the proper application or normal usage