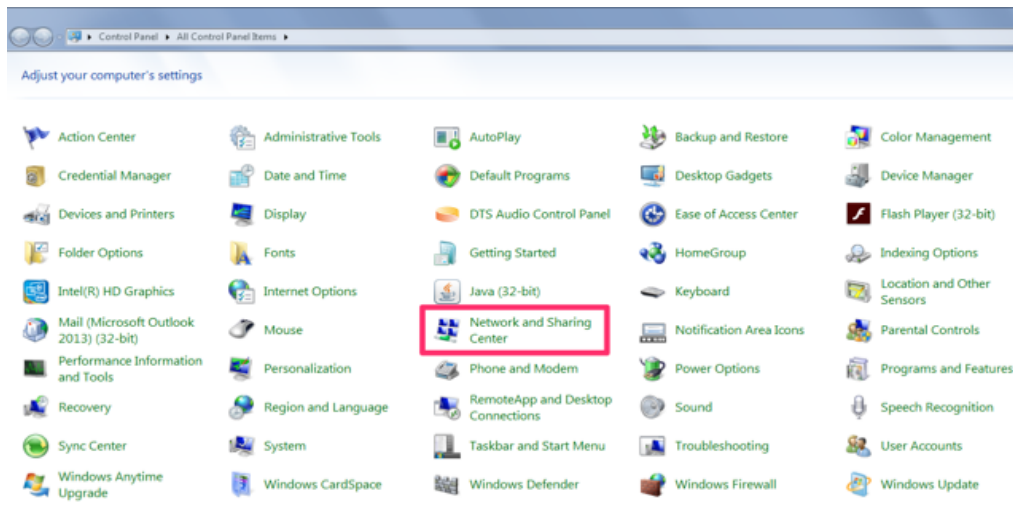


# Steps for configuring HDMI network matrix switch receivers and Windows 7

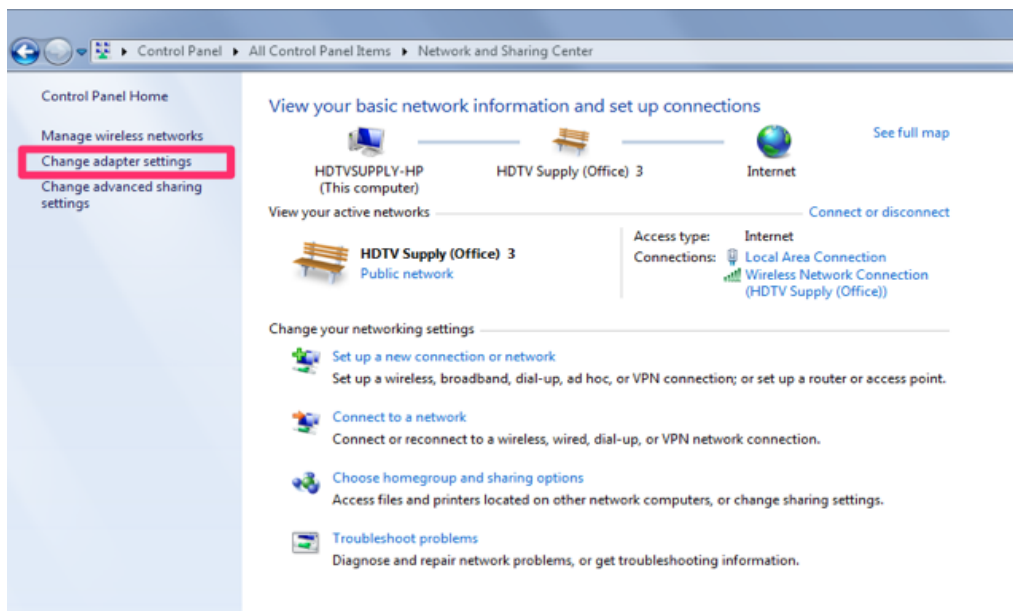
Here are the steps to change the IP addresses and MAC addresses on the receivers using a Windows 7 machine

1. Click **Start** and open the **control panel**

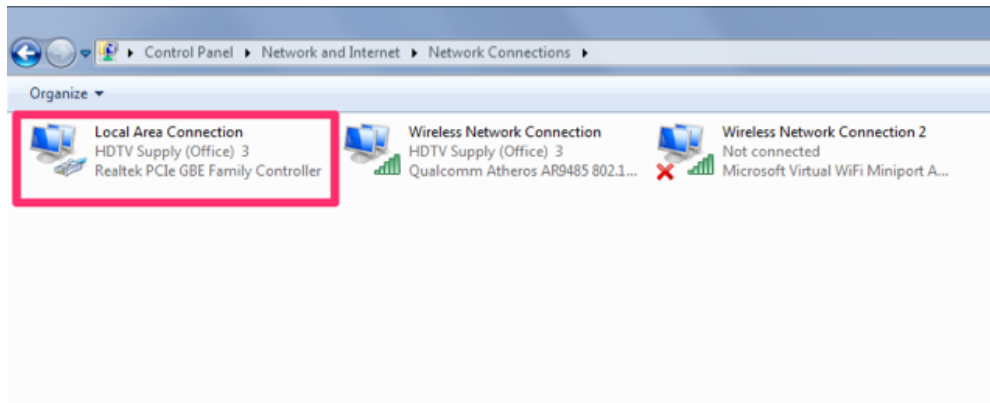
2. **Open Network and Sharing Center**



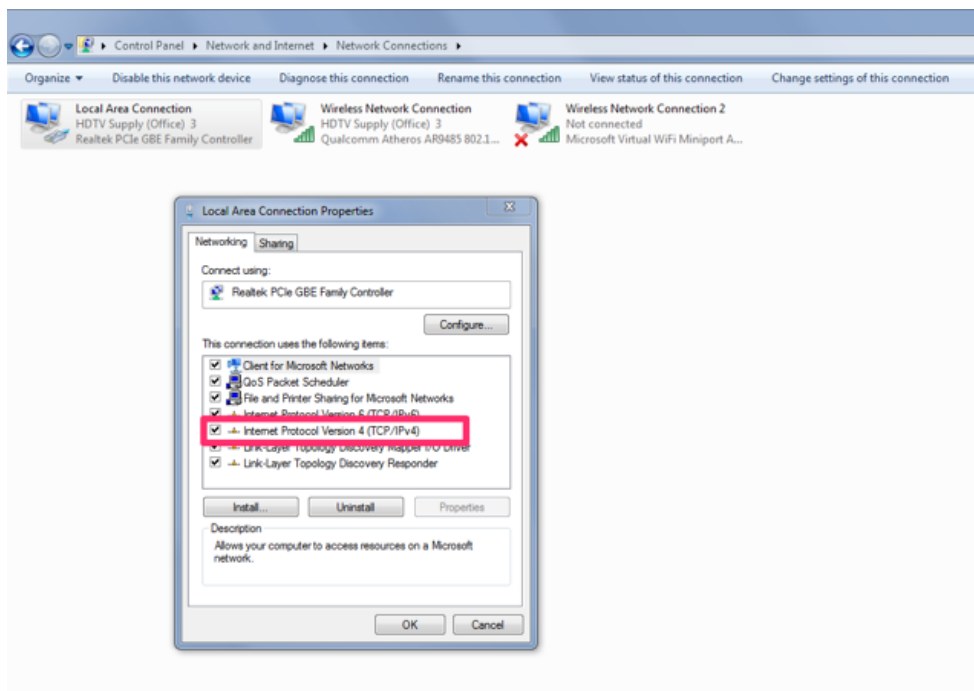
3. **Select Change adapter settings**



#### 4. Select the adapter that you have connected to the PC and transmitter or receiver



#### 5. Select Internet Version Protocol Version 4 and click properties



#### 6. From there you can follow the video steps **PLEASE MAKE SURE YOU CHANGE THE IP AND MAC ADDRESSES ON EACH RECEIVER AND TRANSMITTER**

<https://hdtvsupply.wistia.com/medias/yyu6y9qi5t>