

4 BY 4 HDMI MATRIX SWITCH with Extender

User Manual

Introduction

Thank you for purchasing HDMI 4 by 4 HD video matrix switch with extended function by built-in 4-way CAT5 / 6 extension transmitter, extend distance up to 50m, This matrix provide 4 HDMI output and each HDMI output is supporting 1080P fullHD plus 3D. It works with Blu-ray players, Set-top boxes, Home Theater that connect to HDMI display. Please read the user manual before Installation.

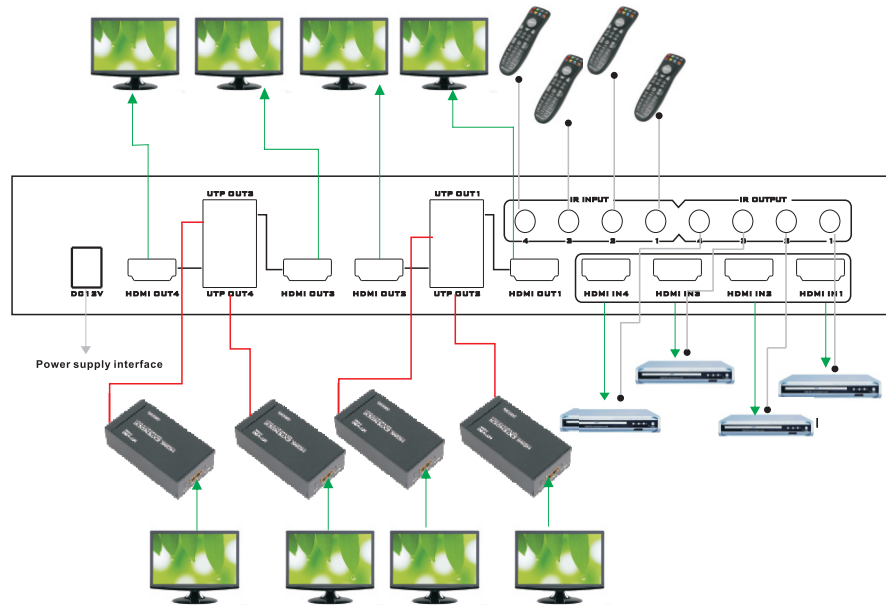
Features

- HDMI 1.3 compliance, while supporting HDMI 1.4 3D
- HDCP1.3 Compliance
- 4x4 HDMI matrix, allows any source to be displayed on multiple displays at the same time. Each has a HDMI output and one local RJ-45 port
- Supports resolution 1080p / 1080i / 720p / 576p / 480p / 576i/480i, audio formats PCM, Dolby®-AC3, DTS®7.1, DSD
- Support Power shut down protection
- Supports multi-mode control by UTP port, RS232, IR
- ±8 kV ESD protection, Human body model
- Special industrial metal housing

Specification

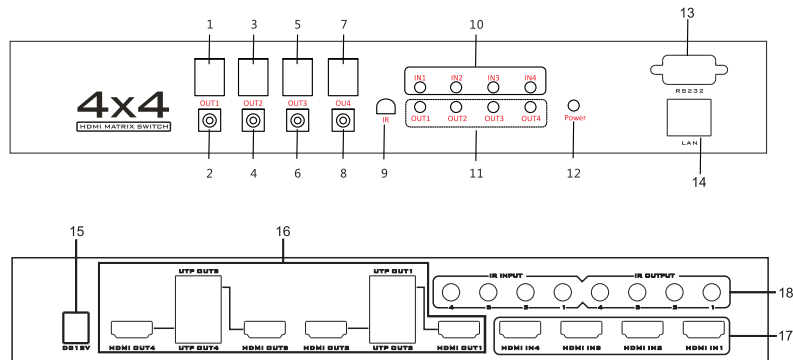
Interface	4 HDMI input ports (female type A); 4 HDMI outputs (female type A); 4 Cat5e/6 extender output(RJ45); 4 IR output (3.5mm); 4 IR input (3.5mm); RS232 series port(DB9); LAN port (RJ45); 12V DC in (Ø3)
Power	<30W when the function of power over UTP of 4 extender output is on.
Input/Output Video formats	HDMI v1.3, 1080p/1080i/720p/576p/480p/576i/480i
HD interface standard	HDMI 1.3 standard (HDMI 1.4 3D function), HDCP 1.2, support CEC, EDID
Input Video Signal Amplitude	0.5-1.0 volts p-p
Input DDC Signal	5 volts p-p (TTL)
HDMI Input/output audio formats	PCM, Dolby®-AC3, DTS®7.1, DSD ,Maximum 8 channels
HDMI input/output cable distance	≥15m (26 AWG, and can be extended with amplifier in most cases)
Extender output resolution and distance	1080P 170ft (50 meters)-CAT5e/ 230ft (70 meters)-CAT6 720P/1080i 230ft (70 meters)-CAT5e/ 300ft (90 meters)-CAT6
Indicators	Power-Green, Extender output connected status-Green, Matrix Status-Yellow
IR frequency	38KHz
ESD level	HBM ±8 kV (Contact Discharge)
Temperature range	0~40°C (operation), -20~60°C(stock)
Compliance	FCC; CE

Diagram



① Input 1 shows X means the signal come from input 1 X	② Input 1 selection and the output shows the input 1 signal byturn from 1-2-3-4-1
③ Input 2 shows X means the signal come from input 2 X	④ Input 2 selection and the output shows the input 2 signal byturn from 1-2-3-4-1
⑤ Input 3 shows X means the signal come from input 3 X	⑥ Input 3 selection and the output shows the input 3 signal by turn from 1-2-3-4-1
⑦ Input 4 shows X means the signal come from input 4 X	⑧ Input 4 selection and the output shows the input 4 signal by turn from 1-2-3-4-1
⑨ IR remote connection	⑩ Input status light
⑪ Output status light	⑫ Power feedback
⑬ RS232 control	⑭ UTP control (LAN)
⑮ Power Connection	⑯ 4 HDMI output
⑰ 4 HDMI input	⑱ IR input and output connection

Input and output interface



Interface diagram



- 1.IR output
- 2.HDMI output
- 3.IR input
- 4.UTP input
- 5.Power input

Installation

Link the Matrix switch and HDMI display by HDMI cables or single UTP cable with HDMI extender, single UTP cable HDMI extender connect to display, at the same time access IR TX an RX cable to the matrix

Operation

- a) Input source and output source is power on.
- b) Ensure that all HDMI and IR are reliable connection.
- c) Access to the power adapter and turn on the matrix, the power light will be illuminate.

Note: The host power supply and the receiver should be correct connected)

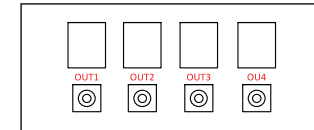
then the power indicator light will be illuminated.

- d) Wait for 4 to 5 seconds, the matrix will be done automatically initialized with the EDID information read
- e) one of the 4 HDMI inputs signal lights will be illuminate This indicates that the input signal is working.
- f) The output terminal connected to the display will show the video input source content.

Control Mode

1.The front panel control

"OUTPUT SELECTION" button 1-4 can be used to select one of the 4-way



2. IR Remote Control

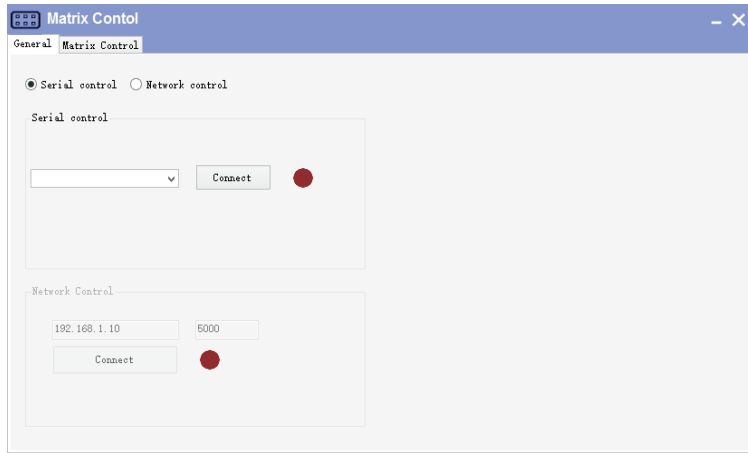
With the remote control, select the output from 1, 2, 3, 4 or the left and right key to switch, make sure the controller to face the front panel IR window, or point to the IR receiver if IR cable connected

3. IR Matrix Switch Control

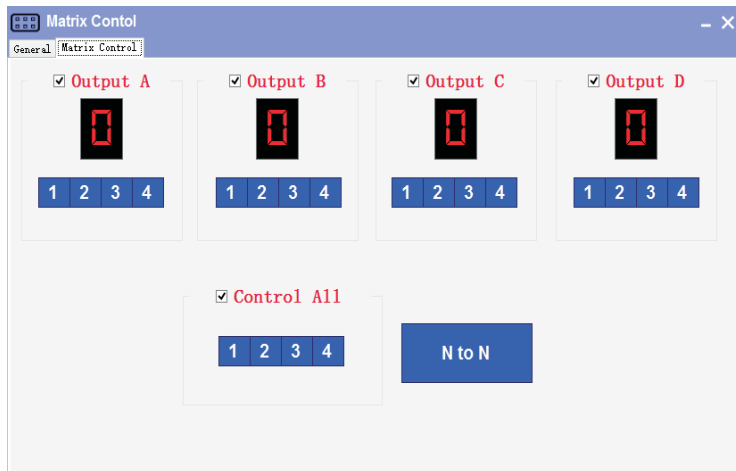
Link the IR receiver cable to the matrix, and fix the reflected IR receiver to the display, followed the IR transmitter cable connect to the matrix, fix the reflected IR transmitter to the HD source.. E.G.: when choose the display 1 shows the HD source1, just get the IR controller pointing to the display A IR receiver cable. Enjoy the control now.

4. RS232 and TCP control

Green software installation by copy the driver document.
Easy-to-use



Select RS232 COM or TCP mode, open the follows window



LED dedicates the input and output port, click the port you selected and enjoy it.

Package Content

- 1*4X4 HDMI matrix switch
- 1*12V 2A Power adapter
- 4* DC 5V Power adapter for Receivers
- 4*IR Transmitter cable
- 4*IR Receiver cable
- 1*IR remote controller
- 4* HDMI matrix switch receiver
- 2*Mounting kit
- 1*User Manual