



8-Port HDMI Switch

USER MANUAL

VS0801H

EMC INFORMATION

This equipment has been tested and found to comply with the limits for a Class B digital device, pursuant to Part 15 of the FCC Rules. These limits are designed to provide reasonable protection against harmful interference in a residential installation. This equipment generates, uses and can radiate radio frequency energy, and if not installed and used in accordance with the instruction manual, may cause interference to radio communications. However, there is no guarantee that interference will not occur in a particular installation. If this equipment does cause harmful interference to radio or television reception, which can be determined by turning the equipment off and on, the user is encouraged to try to correct the interference by one or more of the following measures:

- ◆ Reorient or relocate the receiving antenna;
- ◆ Increase the separation between the equipment and receiver;
- ◆ Connect the equipment into an outlet on a circuit different from that which the receiver is connected;
- ◆ Consult the dealer or an experienced radio/television technician for help.

FCC Caution: Any changes or modifications not expressly approved by the party responsible for compliance could void the user's authority to operate this equipment.

RoHS

This product is RoHS compliant.

KCC Statement: 유선 제품용 / A 급 기기 (업무용 방송 통신 기기) 이 기기는 업무용 (A 급) 전자파적합기기로서 판매자 또는 사용자는 이 점을 주의하시기 바라며 , 가정 외의 지역에서 사용하는 것을 목적으로 합니다 .



SJ/T 11364-2006

The following contains information that relates to China.

| 部件名称 | 有毒有害物质或元素 | | | | | |
|------|-----------|---|---|-----|------|-------|
| | 铅 | 汞 | 镉 | 六价铬 | 多溴联苯 | 多溴二苯醚 |
| 电器部件 | ● | ○ | ○ | ○ | ○ | ○ |
| 机构部件 | ○ | ○ | ○ | ○ | ○ | ○ |

- : 表示该有毒有害物质在该部件所有均质材料中的含量均在SJ/T 11363-2006规定的限量要求之下。
- : 表示符合欧盟的豁免条款, 但该有毒有害物质至少在该部件的某一均质材料中的含量超出SJ/T 11363-2006的限量要求。
- ×: 表示该有毒有害物质至少在该部件的某一均质材料中的含量超出SJ/T 11363-2006的限量要求。

V50801H USER MANUAL

ONLINE REGISTRATION

| | |
|---------------|---|
| International | http://support.aten.com |
|---------------|---|

TELEPHONE SUPPORT

| | |
|----------------|-------------------------|
| International | 886-2-8692-6959 |
| China | 86-10-5255-0110 |
| Japan | 81-3-5615-5811 |
| Korea | 82-2-467-6789 |
| North America | 1-888-999-ATEN ext 4988 |
| United Kingdom | 44-8448-158923 |

TECHNICAL SUPPORT

- ◆ For international online technical support – including troubleshooting, documentation, and software updates:
<http://support.aten.com>
- ◆ For North American technical support:

| | | |
|--------------------------|--|--|
| Email Support | | support@aten-usa.com |
| Online Technical Support | Troubleshooting Documentation Software Updates | http://support.aten.com |
| Telephone Support | | 1-888-999-ATEN ext 4998 |

Copyright © 2015 ATEN® International Co., Ltd.

Firmware version: V2.0.197

Date Published: 2017-02-07

ATEN and the ATEN logo are trademarks of ATEN International Co., Ltd. All rights reserved. All other trademarks are the property of their respective owners.

PACKAGE CONTENTS

The VS0801H 8-port HDMI Switch package contains the following items:

- ◆ 1 VS0801H 8-port HDMI Switch
- ◆ 1 IR Remote Control Unit
- ◆ 1 Power Adapter
- ◆ 1 Mounting Kit
- ◆ 1 User Instructions*

Check to make sure that all the components are present and that nothing got damaged in shipping. If you encounter a problem, contact your dealer.

Read this manual thoroughly and follow the installation and operation procedures carefully to prevent any damage to the unit, and/or any of the devices connected to it.

* Features may have been added to the VS0801H since this manual was published. Please visit our website to download the most up-to-date version of the manual.

OVERVIEW

With more and more HDMI devices entering the Home Theater market, the need for simultaneous access to different HDMI A/V sources is becoming increasingly important. Now, the VS0801H 8-port HDMI Switch offers an easy and affordable way to add HDMI capabilities to your home theater system by allowing you to switch easily between up to eight HDMI A/V sources that are connected to your HDMI display.

With eight HDMI A/V input ports, the VS0801H 8-port HDMI Switch allows you to connect eight HDMI devices (such as an HD camcorder or satellite box, HD-DVD player, hi-def Blu-ray player, home theater PC, stand-alone streaming media player, gaming console, etc.) to your HDMI monitor, display, projector or TV at the same time. The remote control and convenient front panel pushbuttons allow you to quickly and easily toggle between HDMI sources, the front panel LEDs indicate the source device at a glance.

Furthermore, for complete system and install integration, RS-232 control is standard through the VS0801H's built-in bi-directional RS-232 serial port that allows the switch to be controlled through a high-end controller, PC, and/or home automation / home theater software package.

FEATURES

- ◆ Allows up to eight HDMI sources to be connected to one HDMI display
- ◆ Quick and easy switching between HDMI sources via front panel pushbuttons or IR remote control
- ◆ Built-in bi-directional RS-232 serial port for high-end system control*
- ◆ Supports Dolby True HD and DTS HD Master Audio
- ◆ Up to 60 Hz refresh rate
- ◆ Long-distance transmission – up to 20 m (24 AWG) and 15 m (28 AWG)
- ◆ Superior video quality – HDTV resolutions of 480p, 720p, 1080i, 1080p (1920x1080); VGA, SVGA, SXGA, UXGA, and WUXGA (1920x1200)
- ◆ HDMI (3D, Deep Color)
- ◆ Plug-and-play – no software installation required
- ◆ DDC compatible
- ◆ HDMI and HDCP 1.1 compatible
- ◆ Consumer Electronics Control (CEC) allows interconnected HDMI devices to communicate and respond to one remote control
- ◆ Signaling rates up to 2.25 Gbits in support of 1080p display
- ◆ All-metal casing
- ◆ Easy and affordable way to add eight HDMI inputs to your home theater system

Note: The VS0801H AP and GUI operational instructions can be downloaded from the ATEN website (www.aten.com).

SYSTEM REQUIREMENTS

SOURCE DEVICES(S)

- ◆ HDMI Type A output connector(s)

Note: A DVI/HDMI adapter is required when connecting a DVI source device.

DISPLAY DEVICE

- ◆ A display device or receiver with an HDMI Type A input connector

CABLES

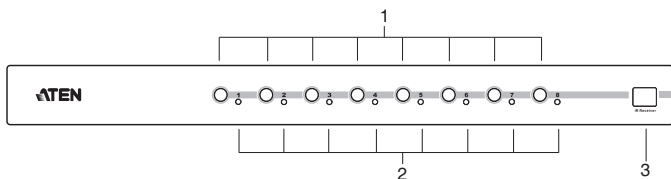
- ◆ 1 HDMI cable for each source device you will be connecting
- ◆ 1 HDMI cable for your display device

Note: 1. No HDMI cables are included in this package. We strongly recommend that you purchase high-quality cables of appropriate length since this will affect the quality of the audio and video display. Contact your dealer to purchase the correct cable sets.

2. If you wish to utilize the VS0801H's high-end serial controller function, you will also need to purchase an appropriate RS-232 cable. See *Installing the RS-232 Controller*, page 12.

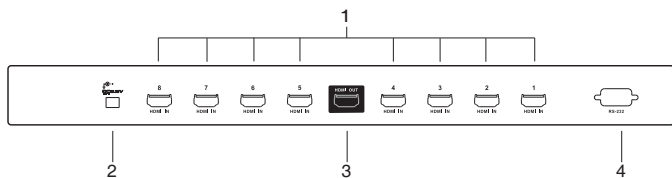
COMPONENTS

VS0801H FRONT VIEW



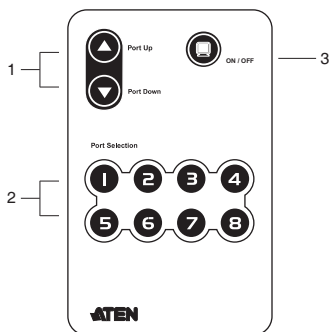
| No. | Component | Function |
|-----|----------------------------|---|
| 1 | Port Selection Pushbuttons | Pressing a port selection pushbutton routes the HDMI source from the corresponding input port to the output port for display. |
| 2 | Port LEDs | There is one port selected LED next to each port selection pushbutton. This lights green to indicate that the corresponding port has been selected. Note: When you use the IR remote control or serial commands to switch off the HDMI output port, the LEDs for port 3 and 6 will flash. |
| 3 | IR Receiver | This receives signals from the IR remote control. |

VS0801H REAR VIEW



| No. | Component | Function |
|-----|--------------------|--|
| 1 | HDMI In | The cables from the HDMI source devices plug into any of the eight available ports. |
| 2 | Power Jack | The power adapter cable plugs in here. |
| 3 | HDMI Out | The cable from the HDMI display device plugs in here. |
| 4 | RS-232 Serial Port | This is the serial remote port for input source selection and high-end system control. |

IR REMOTE CONTROL



| No. | Component | Function |
|-----|-----------------------------|---|
| 1 | Port Up / Port Down Buttons | Press the Port Up button to cycle forward through the source devices (1 to 2; 2 to 3; ... 8 to 1). Press the Port Down button to cycle backward through the source devices. (8 to 7; 7 to 6; ... 1 to 8) |
| 2 | Port Selection Buttons | Press a button to bring the focus directly to the source device attached to its associated port. |
| 3 | On / Off Button | This button enables / disables the HDMI output. |

INSTALLATION



1. Make sure that the power to all devices you will be installing has been turned off.
2. Make sure that all devices you will be installing are properly grounded.

Installation of the VS0801H is simply a matter of plugging in the appropriate cables.

To install the switch, refer to the installation diagram on page 12 as you perform the following three steps:

1. Use an HDMI cable to connect the HDMI input port on the video display device to the HDMI output port on the rear of the VS0801H.
2. Use HDMI cables to connect the HDMI output ports on the source device(s) to the HDMI input ports on the VS0801H. Eight HDMI input ports are located on the rear of the switch.
3. Plug the provided power adapter into an appropriate AC power source; plug the power adapter cable into the Power Jack on the VS0801H.

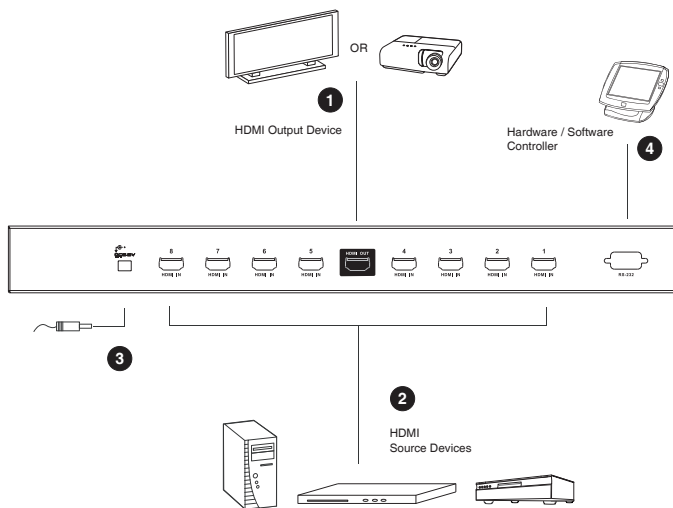
This completes the basic installation of the VS0801H 8-port HDMI Switch. You may now power on the display and source devices.

INSTALLING THE RS-232 CONTROLLER

In order to use the RS-232 serial interface to attach a high-end controller (such as a PC) to the VS0801H, use a serial cable such as a modem cable. The end connecting to the VS0801H should have a 9-pin male connector. Connect this to the serial interface on the rear of the VS0801H. Refer to number 4 on the diagram on page 12.

Note: To configure the controller serial port, see page 14.

INSTALLATION DIAGRAM



SOURCE DEVICE SELECTION

The VS0801H 8-port HDMI Switch offers easy and flexible source device selection with either the front panel pushbuttons, with the remote control, or through the RS-232 serial interface.

MANUAL SELECTION

To select a source device, press the pushbutton that corresponds to the port it is connected to.

Note: The SELECTED LED (green) light indicates which port is currently selected.

REMOTE CONTROL SELECTION

To select a source device with the remote control, press the number button that corresponds to the port it is connected to.

Alternatively, you may also cycle through the source devices by pushing the Port Up and Port Down buttons on the remote control unit.

- ◆ Use the Port Up button to select the next port in ascending order (from left to right on the front view panel).
- ◆ Use the Port Down button to select the next port in descending order (from right to left on the front view panel).

Note:

1. The maximum range of the remote control unit is 10 meters (30 ft)
2. Aim the remote control unit at the IR receiver located on the front panel of the VS0801H. For optimum performance, make sure there is a clear line-of-sight between the remote control unit and the IR receiver.

AUTO SWITCH

Auto Switch places priority on a port, so that when a source device is connected to that port, the VS0801H will automatically switch to it. There are three types of auto switching – **Auto**: switch priority is placed on a particular port, and **Next**: switch priority is placed on the next port with a new source connected to it. **Default** is the standard setting that functions normally without automatic switching. Once Auto Switch is set, it stays on that port until the device is disconnected or **Default** mode is enabled.

In addition, the **Go To** function can be enabled via RS-232 commands and enables the VS0801H to switch to the next port with a powered-on source device when the current input source is off. To set Go To, see *Switch Mode Command*, page 19.

You can use RS-232 commands to set **Auto** mode for any selected ports, **Next** mode or **Default** mode and to set Auto mode for other ports. (see *Switch Mode Command*, page 19). To set the required mode setting, use the relevant RS-232 commands

- ◆ **Default Mode** – The switch behaves normally without automatic switching operation (disables **Auto** Switch mode).
- ◆ **Auto Mode** – Sets **Auto** mode for any selected ports, so that when a device is connected to the selected port, the VS0801H will automatically switch to it. When **Auto** mode is enabled, the VS0801H will not switch ports until that port's video signal is disconnected or **Default** mode is enabled.
- ◆ **Next Mode** – With **Next** mode set, the switch priority is placed on the next port that has a new source connected to it. To disable **Next** mode, **Default** mode must be enabled.

RS-232 SERIAL INTERFACE

The VS0801H's built-in bi-directional RS-232 serial interface allows system control through a high-end controller, PC, and/or home automation / home theater software package.

CONFIGURING THE SERIAL PORT

The controller's serial port should be configured as follows:

| | |
|--------------|-------|
| Baud Rate | 19200 |
| Data Bits | 8 |
| Parity | None |
| Stop Bits | 1 |
| Flow Control | None |

VERIFICATION

After entering a command, a verification message appears at the end of the command line as follows:

- ◆ **Command OK** - indicates that the command is correct and successfully performed by the switch
- ◆ **Command incorrect** - indicates that the command has the wrong format and/or values.

SWITCH PORT COMMANDS

The formulas for Switch Port commands are as follows:

1. Switch Command + Input Port + Port Number [Enter]

For example, to switch to input port 02, type the following:

sw i02 [Enter]

2. Switch Command + Control [Enter]

For example, to switch to the next port, type the following:

sw + [Enter]

3. Switch Command + Control [Enter]

For example, to turn off the output port, type the following:

sw off [Enter]

The following tables show the possible values for the **Input Port**, **Port Number** and **Control** commands:

| Command | Description |
|---------|----------------|
| sw | Switch command |

| Input Port | Description |
|------------|--------------------|
| i | Input port command |

| Port Number | Description |
|-------------|----------------------------|
| xx | 01-08 port (default is 01) |

| Control | Description |
|---------|--------------------------|
| + | Next Port |
| - | Previous Port |
| on | Turn on the output port |
| off | Turn off the output port |

The following table shows the available command list:

| Com-mand | Input | Port Number | Control | Enter | Description |
|----------|-------|-------------|---------|-------|------------------------------------|
| sw | i | xx | | Enter | Switch to input port xx (xx:01~08) |
| sw | | | + | Enter | Switch to the next input port |
| sw | | | - | Enter | Switch to the previous input port |
| sw | | | on | Enter | Turn on the output port |
| sw | | | off | Enter | Turn off the output port |

-
- Note:**
1. Each command string can be separated with a space.
 2. The **Input / Output** port command string can be skipped, and the default value(s) will be used. For example, to switch the input port 01 to the default output port 01, simply enter: **sw i01**.
 3. The input port and output port command strings are interchangeable. For example: **sw i02 o01** can also be **sw o01 i02**.
-

SWITCH MODE COMMAND

You can choose how the VS0801H behaves when a new input source is connected to it. By default the Next switch mode setting is enabled. Use the commands below to select a different mode.

Next - Switch priority is placed on the next port that has a new source device connected to it. (default)

Default - The switch behaves normally without automatic switching.

Auto - Places priority on a selected port so that when a source is connected to the said port, the VS0801H automatically switches to it, and the port can not be changed until the source is unplugged or auto switching mode is disabled with the default command.

In addition, the **Go To** function enables the VS0801H to switch to the next port with a powered on source device when the current input source device is powered off.

The formulas for Switch Mode commands are as follows:

1. Switch Command + Input Command + Port Number + Control [Enter]

For example, to enable Auto mode for port 02, type the following:

swmode i02 auto [Enter]

2. Switch Command + Control [Enter]

For example, to enable Next mode, type the following:

swmode next [Enter]

3. Switch Command + Control [Enter]

For example, to enable Default mode to disable Next/Auto mode, type the following:

swmode default [Enter]

4. Switch Command + Control [Enter]

For example, to enable the Go To function, type the following:

swmode goto on [Enter]

The following tables show the values for **Switch Mode**:

| Command | Description |
|---------|---------------------|
| swmode | Switch Mode command |

| Input Command | Description |
|---------------|---------------|
| i | Input command |

| Port number | Description |
|-------------|----------------------------|
| xx | 01-08 port (default is 01) |

| Control | Description |
|---------|---|
| next | Priority is placed on the next port that has a new source connected to it (default) |
| default | No automatic switching |
| auto | Priority is placed on a selected port |

| Control | Description |
|----------|---|
| goto on | Switch to the next port with a powered on source device when the current input source is off. |
| goto off | Disable Go To (default) |

The following table lists the available commands:

| Command | Input | Port # | Control | Enter | Description |
|---------|-------|--------|----------|---------|---------------------------------|
| swmode | - | - | default | [Enter] | Use Default switch mode |
| | - | - | next | [Enter] | Use Next switch mode |
| | i | xx | auto | [Enter] | Use Auto switch mode on port xx |
| | - | - | goto on | [Enter] | Enable Go To function |
| | - | - | goto off | [Enter] | Disable Go To function |

Note: 1. Each command string can be separated with a space.

2. The **Input** port command string can be skipped and the default value(s) will be used.
-

READ COMMAND

To view the current configuration settings of the device.

The formula for the Read command is as follows:

1. Read Command [Enter]

To read the current configuration settings, type the following:

read [Enter]

The following table shows the value for the **Read** formula:

| Command | Description |
|----------------|----------------------------------|
| read | Read information from the device |

POWERING OFF AND RESTARTING

If you power off the VS0801H, follows these steps before powering it on again:

1. Power off the attached devices.
2. Unplug the power adapter cable from the VS0801H.
3. Wait 10 seconds, and then plug the power adapter cable back in.
4. After the VS0801H is powered on, power on the attached devices.

Note: Whenever the VS0801H is powered on, it automatically selects the first port connected to a powered on source device.

RS-232 CONTROL TOOL OPERATION

OVERVIEW

The VS0801H's built-in bi-directional RS-232 serial interface allows system control through a high-end controller, PC, and/or home automation / home theater software package. The RS-232 Control Tool is an application used to send operational commands from your PC - to the VS0801H through a serial (RS-232) interface connection. RS-232 serial operations to and from the VS0801H can be managed using ATEN's Graphical User Interface (GUI) on computers that are running the Microsoft Windows operating system. In order to use the RS-232 Control Tool, two separate programs must be installed on the PC- .NET Framework 2.0 and the RS-232 Control Tool. The procedure for installing and operating the RS-232 Control Tool is detailed in the following section.

BEFORE YOU BEGIN

INSTALLING .NET FRAMEWORK 2.0

To install .NET Framework on your PC, do the following:

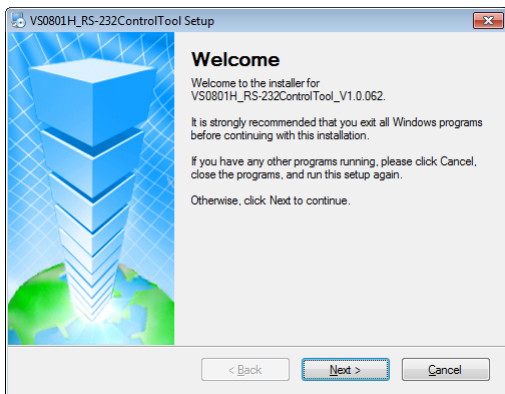
1. Download the executable file from the ATEN website or the Microsoft Download Center online, and run it.
2. Follow the instructions on the screen. The installation applet will automatically detect the operating system and install the correct drivers.

INSTALLING THE RS-232 CONTROL TOOL

To install the RS-232 Control Tool, do the following:

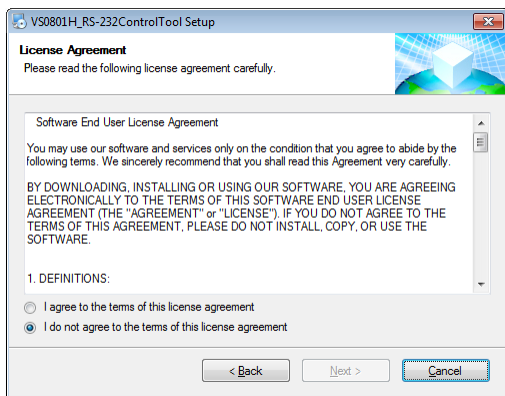
1. Download the RS-232 Control Tool from the Download or VS0801H's *Resource Page* on our website:
www.aten.com
2. Save the file to a convenient location.

3. Double click to run the setup file. The Welcome screen appears:



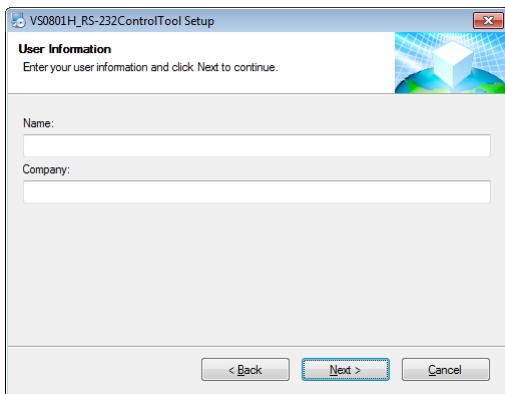
Click **Next**.

4. The License Agreement appears:



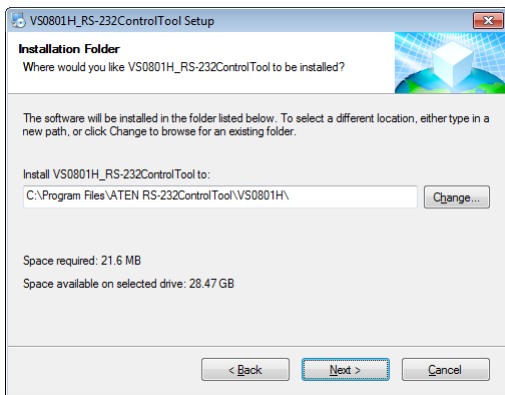
If you agree with the License Agreement, select *I agree with the terms of this license agreement*, and click **Next**.

5. The User Information screen appears:

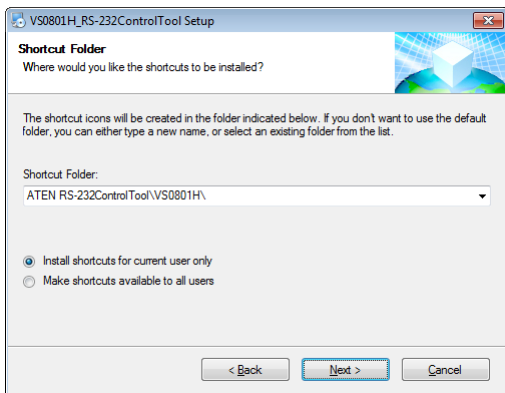


Fill in your *Name* and *Company*, then click **Next**.

6. When the Installation Folder screen appears, you can select where you want to install the program by clicking **Change**, or use the default installation location provided, then click **Next**.

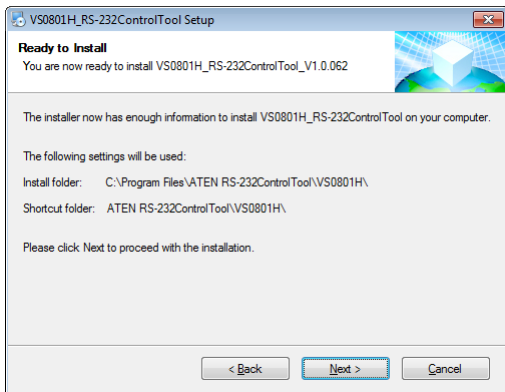


7. From the Shortcut Folder screen type in or use the drop-down menu to enter the folder where you want to install the shortcuts:

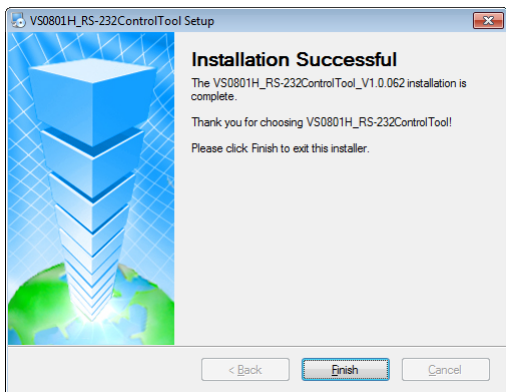


Then select *Install shortcuts for current user only*, or *Make shortcuts available to all users*, and click **Next**.

8. At the Ready to Install screen confirm your settings, click **Back** if you need to make changes, or click **Next** to begin the installation:



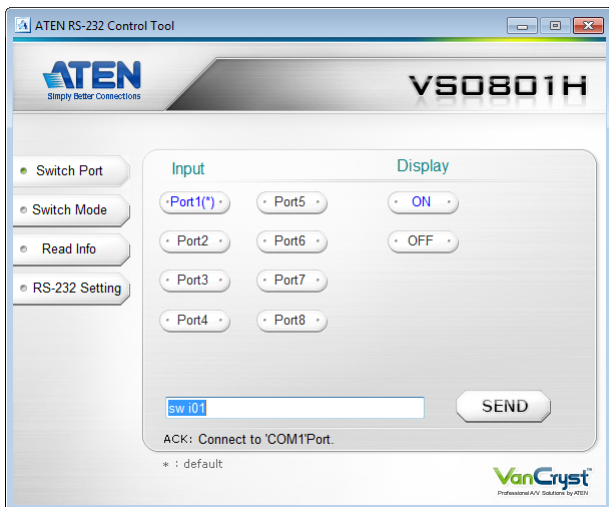
9. When the installation has completed successfully, the following screen will appear:



Click **Finish**. You are now ready to use the RS-232 Control Tool.

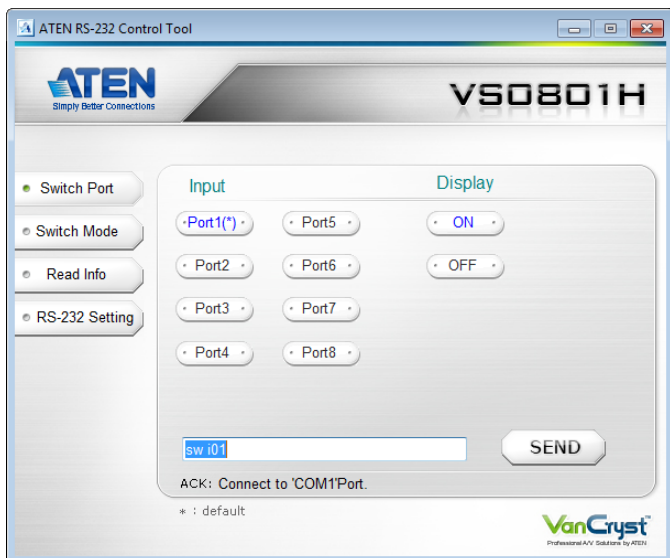
GUI MAIN PAGE

The RS-232 Control Tool is a convenient and intuitive application to send RS-232 commands to your VS0801H. For detailed information about the function of each RS-232 command, *RS-232 Serial Interface*, page 16. To invoke the GUI, simply click the RS-232 Control Tool shortcut. The interface opens on the *Switch Port* page by default, as shown below:



The various elements of the GUI are described in the following sections.

SWITCH PORT



The Switch Port page is used to connect a source device to the display port, and to power the display port On/Off. On the Switch Port page, the following actions are possible:

- ◆ Click on an **Input** port button (options are Ports 1–8).
- ◆ Turn the **Display** On or Off.
- ◆ Use the text box to manually enter the command.
- ◆ Click **Send** to send the command.

Switch Port Commands

These actions can also be performed by keying the command into the text box, and clicking **Send**.

The available formulas for Switch Port commands are as follows:

1. Switch Command + Input Command + Port Number + [Enter]

For example, to switch to input port 02, type the following:

sw i02 [Enter]

2. Switch Command + Control + [Enter]

For example, to switch to the next input port, type the following:

sw + [Enter]

3. Switch Command + Control + [Enter]

For example, to turn off the display port, type the following:

sw off [Enter]

Possible Values

The following table shows the possible values for switch commands:

| Command | Description |
|---------|----------------|
| sw | Switch command |

| Input Command | Description |
|---------------|---------------|
| i | Input command |

| Port Number | Description |
|-------------|----------------------------|
| xx | 01-08 port (default is 01) |

| Control | Description |
|---------|-------------------------------|
| + | Switch to next input port |
| - | Switch to previous input port |
| on | Turn output port on |
| off | Turn output port off |

| Enter | Description |
|---------|--------------------------------|
| [Enter] | Enter and send out the command |

Switch Port Command Table:

| Cmd | In | N1 | Control | Enter | Description |
|-----|----|----|---------|-------|------------------------------------|
| sw | i | xx | | Enter | Switch to input port xx (xx:01~08) |
| sw | | | on | Enter | Switch to next input port |
| sw | | | off | Enter | Switch to previous input port |
| sw | | | + | Enter | Turn on the output port |
| sw | | | - | Enter | Turn off the output port |

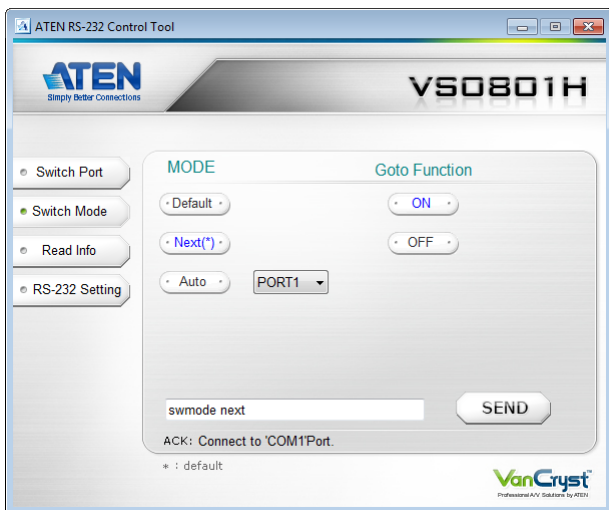
Acknowledge:

After commands are sent acknowledge messages are returned.

| Ack | Description |
|-------------------|--|
| Command OK | Command is correct and function executed |
| Command Incorrect | Unavailable command or parameters |

- Note:**
1. Each command string can be separated with a space.
 2. The **Port Number** command string can be skipped, and the default value will be used.

SWITCH MODE



You can choose how the VS0801H behaves when a new input source is connected to it. By default the Next switch mode setting is enabled. Use the commands below to select a different mode. There are three Switch Modes:

Next - Switch priority is placed on the next port that has a new source device connected to it. (default)

Default - The switch behaves normally without automatic switching.

Auto - Places priority on a selected port so that when a source is connected to the said port, the VS0801H automatically switches to it, and the port can not be changed until the source is unplugged or auto switching mode is disabled with the default command.

In addition, the **Go To** function enables the VS0801H to switch to the next port with a powered on source device when the current input source device is powered off.

Switch Mode Commands

The formulas for Switch Mode commands are as follows:

1. Switch Command + Input Command + Port Number + Control [Enter]

For example, to enable Auto mode for port 02, type the following:

swmode i02 auto [Enter]

2. Switch Command + Control [Enter]

For example, to enable Next mode, type the following:

swmode next [Enter]

3. Switch Command + Control [Enter]

For example, to enable Default mode to disable Next/Auto mode, type the following:

swmode default [Enter]

4. Switch Command + Control [Enter]

For example, to enable the Go To function, type the following:

swmode goto on [Enter]

The following tables show the possible values and formats for the **Switch Mode** formulas:

| Command | Description |
|---------|---------------------|
| swmode | Switch Mode command |

| Input Command | Description |
|---------------|---------------|
| i | Input command |

| Port number | Description |
|-------------|----------------------------|
| xx | 01-04 port (default is 01) |

| Control | Description |
|---------|---|
| next | Priority is placed on the next port that has a new source connected to it (default) |

| Control | Description |
|---------|---------------------------------------|
| default | No automatic switching |
| auto | Priority is placed on a selected port |

| Control | Description |
|----------|---|
| goto on | Switch to the next port with a powered on source device when the current input source is off. |
| goto off | Disable Go To (default) |

The following table lists the available commands:

| Command | Input | Port # | Control | Enter | Description |
|---------|-------|--------|----------|---------|---------------------------------|
| swmode | - | - | default | [Enter] | Use Default switch mode |
| | - | - | next | [Enter] | Use Next switch mode |
| | i | xx | auto | [Enter] | Use Auto switch mode for port # |
| | - | - | goto on | [Enter] | Enable Go To function |
| | - | - | goto off | [Enter] | Disable Go To function |

READ INFO



The read command allows you to read information about the connected device. Click **Send** to retrieve information.

READ COMMAND

To view the current configuration settings of the device.

The formula for the Read command is as follows:

1. Read Command [Enter]

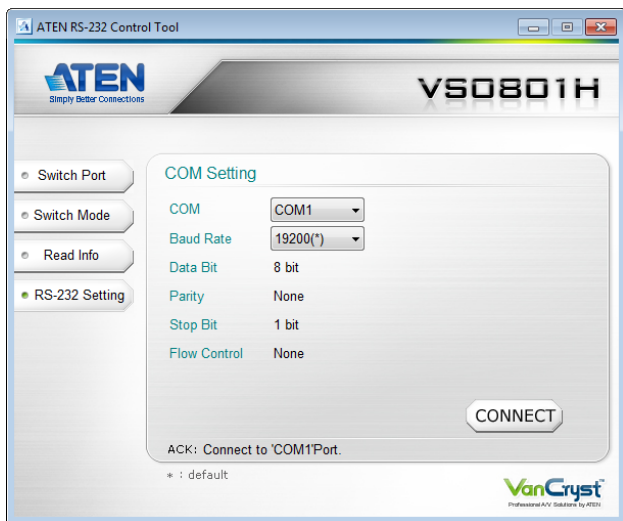
To read the current configuration settings, type the following:

read [Enter]

The following table shows the value for the **Read** formula:

| Command | Description |
|---------|----------------------------------|
| read | Read information from the device |

RS-232 SETTING



On the RS-232 Settings page, the serial port should be configured as follows:

| | |
|--------------|-------|
| Baud Rate | 19200 |
| Data Bits | 8 |
| Parity | None |
| Stop Bits | 1 |
| Flow Control | None |

From the RS-232 Settings page you can set the COM serial port and Baud Rate. To set the COM port or Baud Rate, do the following:

- ◆ Select a **COM** port or **Baud Rate** from the drop-down menu and click **CONNECT**.

If the port connection exists, the *Acknowledgment* message will read: Open port 'COM1' successfully.

SPECIFICATIONS

| Function | | VS0801H | |
|---------------------|------------------------|---|--------------------------------|
| Display Connections | | 1 | |
| Connectors | Device | HDMI In | 8 x HDMI Type A Female (Black) |
| | Display | HDMI Out | 1 x HDMI Type A Female (Black) |
| | RS-232 Port | | 1 x DB-9 Female (Black) |
| | Power | | 1 x DC Jack |
| Switches | Port Select | | 8 x Pushbuttons |
| LEDs | Selected | | 8 (Green) |
| HDMI Resolution | | HDTV resolutions of 480p, 720p, 1080i, 1080p (1920x1080); WUXGA (1920x1200) | |
| Power Consumption | | DC5.3V, 3.71W | |
| Environment | Operating Temp. | | 0–50°C |
| | Storage Temp. | | -20–60°C |
| | Humidity | | 0–80% RH, Non-condensing |
| Physical Properties | Housing | | Metal |
| | Weight | | 1.75 kg |
| | Dimensions (L x W x H) | | 43.70 x 15.97 x 4.40 cm |

LIMITED WARRANTY

IN NO EVENT SHALL THE DIRECT VENDOR'S LIABILITY EXCEED THE PRICE PAID FOR THE PRODUCT FROM THE DIRECT, INDIRECT, SPECIAL, INCIDENTAL OR CONSEQUENTIAL DAMAGES RESULTING FROM THE USE OF THE PRODUCT, DISK OR ITS DOCUMENTATION.

The direct vendor makes no warranty or representation, expressed, implied, or statutory with respect to the contents or use of this documentation, and specially disclaims its quality, performance, merchantability, or fitness for any particular purpose.

The direct vendor also reserves the right to revise or update the device or documentation without obligation to notify any individual or entity of such revisions, or update. For further inquires please contact your direct vendor.