

HBT-C6POE-SET

HDBaseT® HDMI CAT5/6/7 Extender
with POE/LAN/RS-232/ Bi-Directional IR



HDBaseT® Extender

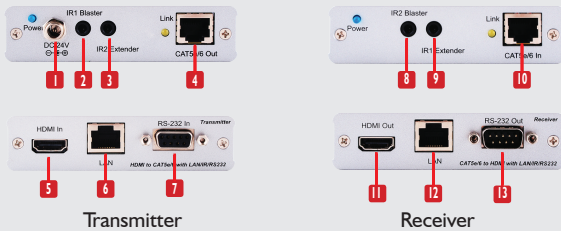
KEY FEATURES

- Input: HDMI with 3D & 4Kx2K, 1080p, HDCP and DVI compliant;
- Video bandwidth: From 300MHz / 9 Gbps;
- PC resolutions: Up to VGA to WUXGA;
- HD resolutions: Up to 4Kx2K (3840x2160@30Hz and 4096x2160@24Hz) 1080p (1920x1080@60Hz);
- Audio supported: LPCM 7.1CH, Dolby TrueHD, Dolby Digital Plus and DTS-HD Master Audio;
- Audio transmission: (32-192kHz sample rate);
- Supports: CEC bypass;
- Distance: Up to 100 meters through CAT6e/6a/7 cables;
- Ethernet transmission: Rate up to 100Mbps;
- Uncompressed video: 1080p, 60 Hz, 36-bit;
- Service: USB for Manufacturer USE ONLY;
- 3D support: Follow by Display / TV's EDID;
- 5Play™ Convergence: HDMI, LAN, PoE & Bi Directional Control (IR & RS-232).

MECHANICAL SPECIFICATIONS

Housing	Metal Case
Dimensions / Net Weight	4" x 4.4" x 1" / 5.733lbs
Weight	252g / 0.5lbs
Power Supply	24V / 1.25A DC (only Transmitter)
Power Consumption	13W
Operating Temperature	0~40°C [32~104°F]
Storage Temperature Relative	20~60°C [-4~140°F]
Humidity	20-90% RH [No Condensation]

PANEL DESCRIPTION



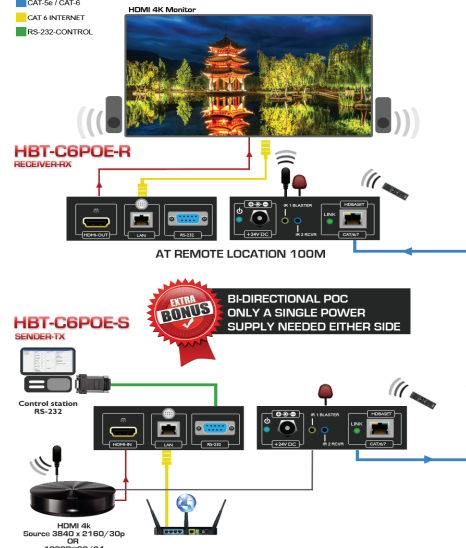
- | | | |
|------------------------|-------------------------|----------------------|
| 1 DC 24V Power | 2 IR 1 Blaster | 11 HDMI OUT |
| 3 IR 2 Extender | 4 CAT 5e/6/7 Out | 12 LAN Out |
| 5 HDMI IN | 6 LAN | 13 RS 232 Out |
| 7 RS 232 IN | 8 IR 2 Blaster | |
| 9 IR 1 Extender | 10 CAT 5e/6/7 In | |



HBT-C6POE-SET

- CABLE INDEX**
- Input / Output
 - CAT-5e / CAT-6
 - CAT 6 INTERNET
 - RS-232 CONTROL

Application Diagram 1
POINT TO POINT
1000'00 = 100m (328 feet) CAT6
4K2K@30 = 100m (328 feet) CAT6A



ITEM

SPECIFICATION

DESCRIPTION	HBT-C6POE-S	HBT-C6POE-R
Description	HDBaseT HDMI Transmitter	HDBaseT HDMI Receiver
Output Displays	HDBaseT HDMI Transmitter	HDBaseT HDMI Receiver
Input	1x 3.5mm IR Extender 1x RS-232 1x LAN port 1x HDMI	1x CAT5e/6/7 1x 3.5mm IR Extender
Output	1x CAT5e/6/7 1x 3.5mm IR Blaster	1x 3.5mm IR Blaster 1x RS-232 1x LAN port 1x HDMI
HDCP	Yes	
Ethernet Speed	100Mbps	
Video Bandwidth	Single-link 300MHz [9Gbps]	
Supported Resolutions	480i~1080p@50/60, 1080p@24, 3D 4K@30 Up to Ultra HD (3840x2160@24/25/30Hz)	
CEC Support	Allow CEC bypass	
CAT5/6/7 Cable	4K2K: (3840X2160@30Hz) ~ 70meter (229feet) (CAT6e) FULL HD: (1080p) ~ 100meter (330feet) (CAT6e/6A)	
Audio Support	LPCM 7.1CH, Dolby TrueHD, Dolby Digital Plus and DTS-HD Master Audio	
IR Frequency	30~50kHz	
ESD Protection	Human body model — ±8kV (air-gap discharge) & ±4kV (contact discharge)	



VIDEO WALL VIDEO PROCESSORS
MULTIVIEWERS DIGITAL SIGNAGE
EXTENDERS CONTROL CENTERS
SCALERS WIRELESS



Toll Free 1.866.508.0269 | sales@avenview.com