

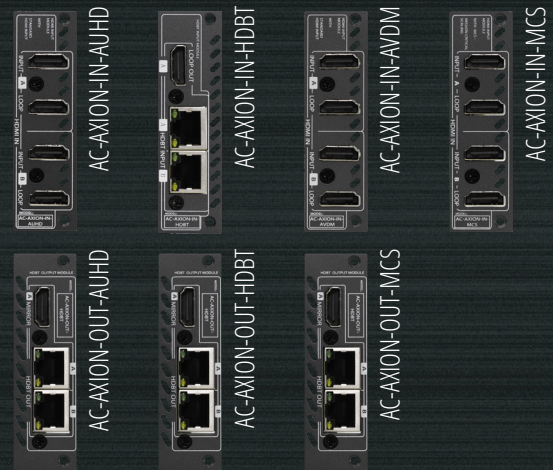
AC-AXION-X: AXION Modular Matrix Chassis and Input/Output Cards

AVProEdge offers the AC-AXION-X in multiple configurations. This product allows you to custom order your inputs and outputs so you can create the ultimate matrix switch. Any unused card slot will have a blank plate installed on it. Mix and match the input cards to create the ultimate video matrix system.

AXION X is engineered for high-end systems and can handle any HDMI 2.0 signal including 4K, HDR, Dolby Vision and Dolby Atmos. With built audio downmixing cards you have the option of downmixing that Dolby Atmos audio into a 2 channel signal that is perfect for whole home distribution.

Available Input/Output Cards:

- AC-AXION-IN-AUHD: INPUT CARD with 2 HDMI Inputs
- AC-AXION-IN-AVDM: INPUT CARD with 2 HDMI Inputs and Downmixing
- AC-AXION-IN-HDBT: INPUT CARD with 2 HDBaseT INPUTS
- AC-AXION-IN-MCS: INPUT CARD with 2 HDMI Inputs with MCS (Mission Critical Scaling)
- AC-AXION-IN-BLANK: Blank Plate Cover for Input Port
- AC-AXION-OUT-AUHD: Output Card with 2 HDMI Outputs
- AC-AXION-OUT-HDBT: Output Card with 2 HDBaseT Outputs
- AC-AXION-OUT-MCS: Output Card with 2 HDMI Outputs and MCS
- AC-AXION-OUT-BLANK: Blank Plate Cover for Output Port



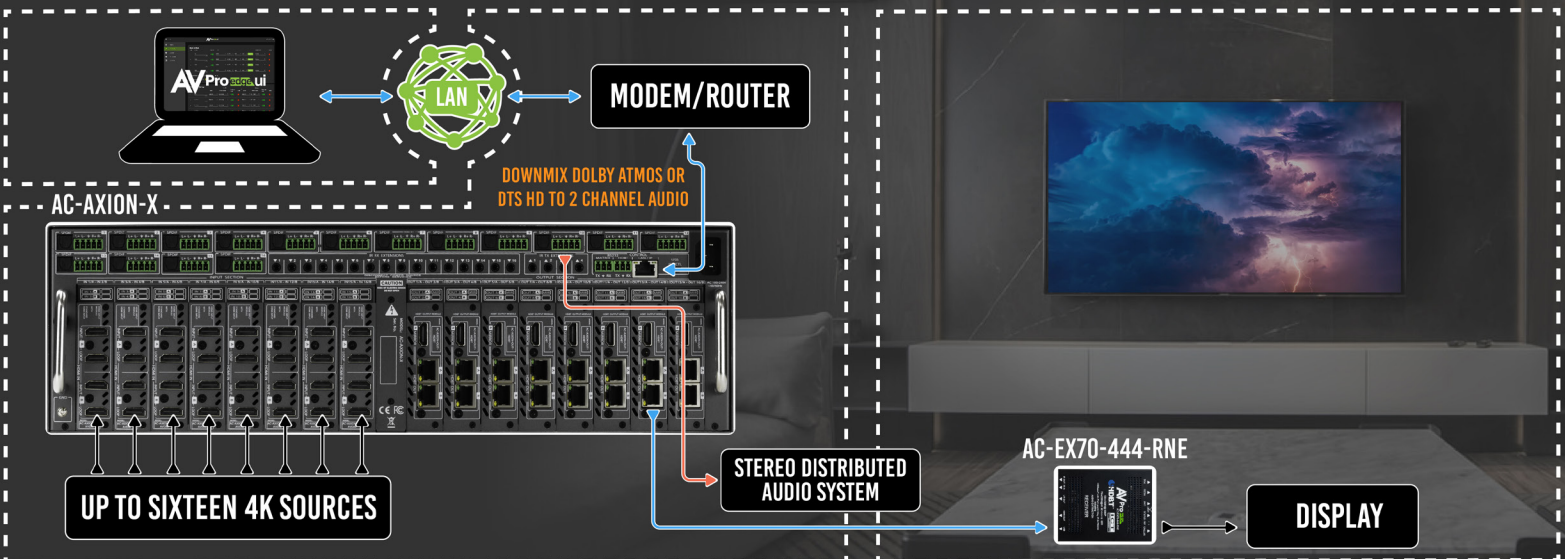
AXION X LUXURY HOME APPLICATION



ANY ROOM

AV RACK

16 DISPLAYS IN DIFFERENT ZONES



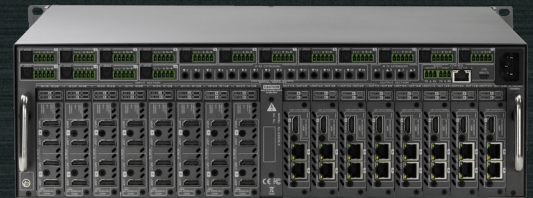


AC-AXION-X: AXION Modular Matrix Chassis and Input/Output Cards



AVAILABLE INPUT CARDS:	
AC-AXION-IN-MCS	X2 HDMI 2.0B INPUT CARD WITH MCS WITH 2x MIRRORRED HDMI 2.0B LOOP OUTS
AC-AXION-IN-HDBT	X2 100M 2310 HDBT RECEIVER INPUT AXION CARD
AC-AXION-IN-AVDM	X2 HDMI 2.0B INPUT CARD WITH 8+ CH DOWNMIXING
AC-AXION-IN-AUHD	X2 HDMI 2.0B INPUT CARD
AVAILABLE OUTPUT CARDS:	
AC-AXION-OUT-MCS	X2 HDMI 2.0B MCS OUTPUT CARD WITH MIRRORRED UNTOUCHED HDMI 2.0B
AC-AXION-OUT-HDBT	X2 18G 70 METER HDBASET TRANSMITTER OUTPUT CARD
AC-AXION-OUT-AUHD	X2 HDMI 2.0B OUTPUT CARD
AUDIO:	
AUDIO FORMATS SUPPORTED HDMI	PCM 2.0 CH, LPCM 5.1 & 7.1, DOLBY DIGITAL, DTS 5.1, DOLBY DIGITAL PLUS, DOLBY TRUEHD, DTS-HD MASTER AUDIO, DTS-X, DOLBY ATMOS
AUDIO FORMATS SUPPORTED EXTRACTED (TOSLINK)	PCM 2 CH, LPCM 6 CH, LPCM 7 CH, DOLBY DIGITAL, DOLBY DIGITAL PLUS, DTS-HD MASTER AUDIO
AUDIO FORMATS SUPPORTED EXTRACTED (2CH PORT)	PCM 2 CH
AUDIO EXTRACTION LOCATION	BIND TO INPUT, BIND TO OUTPUT OR MATRIX (INDEPENDENT)
AUDIO DELAY (PER OUTPUT, EXTRACTED)	UP TO 630MS
DISTANCE:	
HDBASET OUT (4K60 4:4:4 & HDR) W/ AC-EX70-444-RNE	70 METERS / 230 FEET (CAT 6A)
HDBASET OUT (1080P) W/ AC-EX70-444-RNE	100 METERS / 330 FEET (CAT 6A)
HDBASET OUT (4K60 4:2:0 MAX) W/ AC-EX70-UHD-R	40 METERS / 131 FEET (CAT 6A)
HDBASET OUT (1080P) W/ AC-EX70-UHD-R	70 METERS / 230 FEET (CAT 6A)
HDMI IN/OUT (4K60 4:4:4)	UP TO 50 FEET (USING BULLET TRAIN HDMI)
HDMI IN/OUT (W/ AOC CABLE) (4K60 4:4:4)	UP TO 130 FEET (USING BULLET TRAIN AOC)
OTHER:	
BANDWIDTH HDMI	18 GBPS UNCOMPRESSED
BANDWIDTH HDBASET	18 GBPS (USES ICT ABOVE 10.2 GBPS SIGNALS)
HDCP	HDCP 2.3 AND EARLIER
POH FOR RECEIVERS (NO NEED TO POWER RECEIVERS)	YES, ALL OUTPUTS
CONTROL:	
PORTS	LAN, RS232, IR, MICRO USB
DRIVERS	C4, RTI, ELAN, CRESTRON, URC (FOR MORE - SEE DRIVERS PAGE)
LAN WEB OS	YES
PORTS:	
HDMI	TYPE A
HDBASET	RJ45 W/ POH FOR HDBASET RECEIVERS
LAN	RJ45 W/ WEB INTERFACE/CONTROL
AUDIO (EXTRACTED DIGITAL)	TOSLINK
AUDIO (EXTRACTED ANALOG)	5 PIN TERMINAL BLOCK (BALANCED)
IR RX	3.5MM STEREO (3 CONDUCTOR)
RS232	3 PIN TERMINAL BLOCK
ENVIRONMENTAL:	
OPERATING TEMPERATURE	23 TO 125°F (-5 TO 51°C)
STORAGE TEMPERATURE	-4 TO 140°F (-20 TO 60°C)
HUMIDITY RANGE	5-90% RH (NO CONDENSATION)
POWER:	
POWER CONSUMPTION (TOTAL)	56 WATTS MAX
POWER SUPPLY - MATRIX	INPUT: AC 100-240V ~ 50/60HZ OUTPUT: DC 48V 2A
DIMENSIONS:	
DIMENSIONS (UNIT ONLY HEIGHT/DEPTH/WIDTH)	MM: 134.87 X 406.4 X 441.45 INCH: 5.31 X 16 X 17.38
DIMENSIONS (PACKAGED HEIGHT/DEPTH/WIDTH)	MM: 241.3 X 571.5 X 597 INCH: 9.5 X 22.5 X 23.5
RACK UNITS	3U
WEIGHT UNIT (EMPTY CHASSIS)	26.6 LBS (12.07 KG)
WEIGHT PACKAGED (EMPTY CHASSIS)	33 LBS (14.97 KG)

*SPECIFICATIONS SUBJECT TO CHANGE WITHOUT NOTICE. MASS & DIMENSIONS ARE APPROXIMATE



About AXION

AXION is a customizable video distribution system built for luxury environments, allowing installers to customize a matrix switcher designed for the specific installation. This matrix becomes the backbone of the entire installation delivering 18Gbps 4K signals from the source to display. What makes AXION stand out are the choices the integrator has. Selecting between HDMI or HDBaseT for long video runs lets the integrator decide what type of infrastructure will work best for them. With 4x4, 8x8, and a customizable 16x16, AXION Systems has a product that will work with the sources and displays/projectors your installation requires.

