



# QuietCab and Elite QuietCab

Soundproof Cabinets







## Why Is Noise Canceling So Important?

Increased productivity. Increased profits. Research shows that prolonged exposure to noise creates stress and lowers morale. It can also lead to an increase in accidents and errors. A simple 5-dB reduction in noise can actually cut the risk of hearing loss in half.

A quiet office is a productive office. The Black Box® Elite QuietCab reduces sound by an amazing 31 dB — the most you can get today in a soundproof enclosure. And the cabinet goes through independent, third-party testing to ensure it. The QuietCab reduces audible server and hardware noise by 15 dB and, with its attractive appearance, it can be placed almost anywhere.

### What Are the Benefits of Modern Soundproof Enclosures?

Noise is measured in decibels. A cabinet that provides a noise reduction of 31 decibels (dB), is effectively removing 99,9% of IT-noise.

The noise level in a busy office with people talking measures 78 dB. Normal conversation is about 60 dB. A quiet office with no talking is 48 dB. A whisper is 23 dB. If you put the cabinet in a busy office, you'll reduce the sound to that of an office without speech. If you start with a quiet office, the sound from the cabinet would be as quiet as a whisper.

The cabinet design ensures noise canceling without compromising cooling capacity. To reduce sound, the inside of the Elite QuietCab is heavily lined with one of the most effective acoustic materials available. This heavy-duty, multilayer composite material covers all inside surfaces. Even the six cable routing panels on top and bottom (three each) are covered. QuietCab models have full acoustic foam lining as well.

### Smart Cooling Design

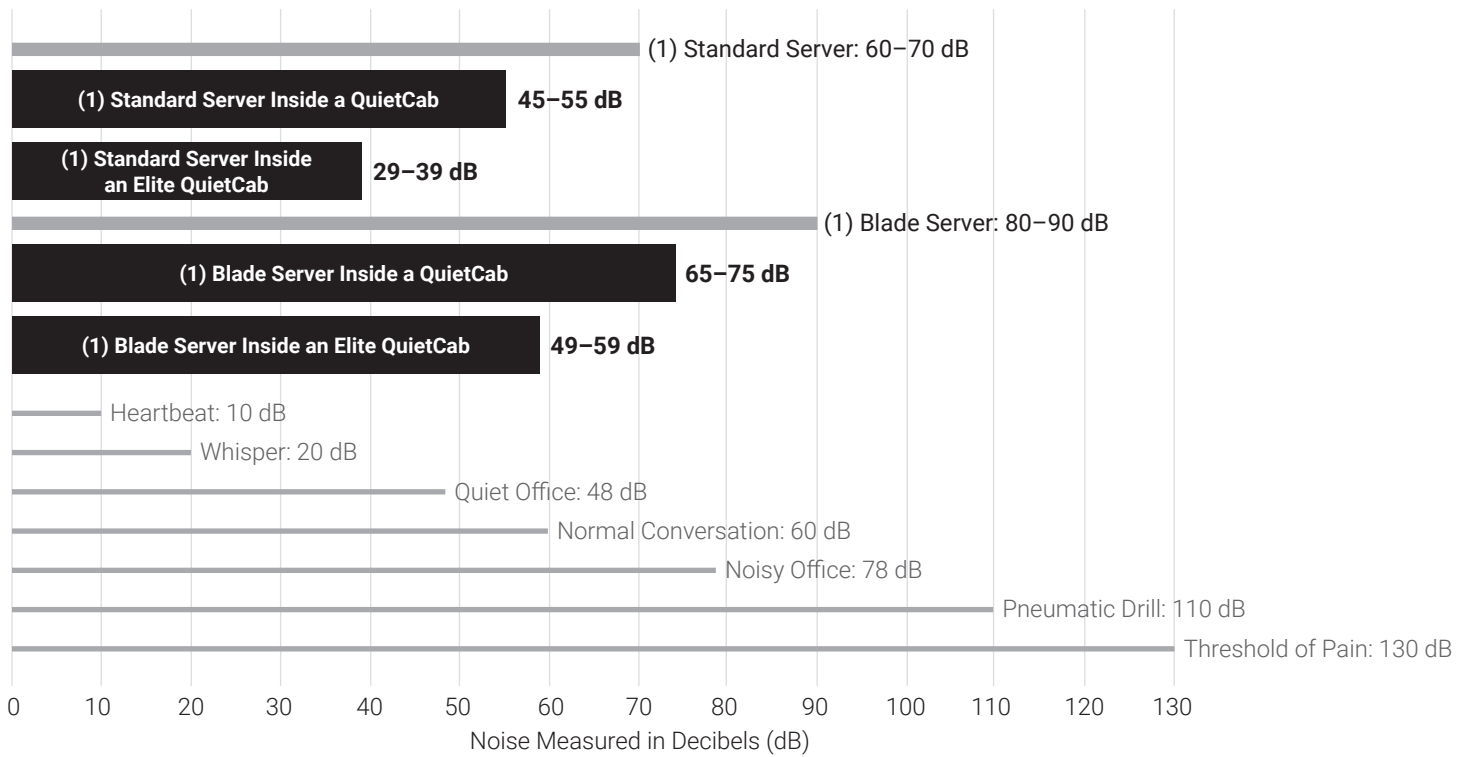
Elite QuietCab Cabinets have an incredible thermal load capacity of up to 12 kW, while QuietCab Cabinets offer up to 3.6 kW. To cool equipment, Elite Cabinets feature two variable-speed fans on the rear doors that are controlled by a temperature sensor to ensure maximum energy efficiency. The integrated environmental monitoring system actually acts as an IoT device that allows you to connect multiple sensors to monitor temperature, fans speeds, power, security and more. Configurable reports with email alerts give you ultimate control of your IT cabinet. QuietCab cabinets feature up to nine fan panels depending on their RUs.

### Ideal for a Wide Range of Industries

- Offices
- Retail stores
- Industrial environments
- Laboratories
- Schools and universities
- Government

# Server Cabinet Noise Reduction

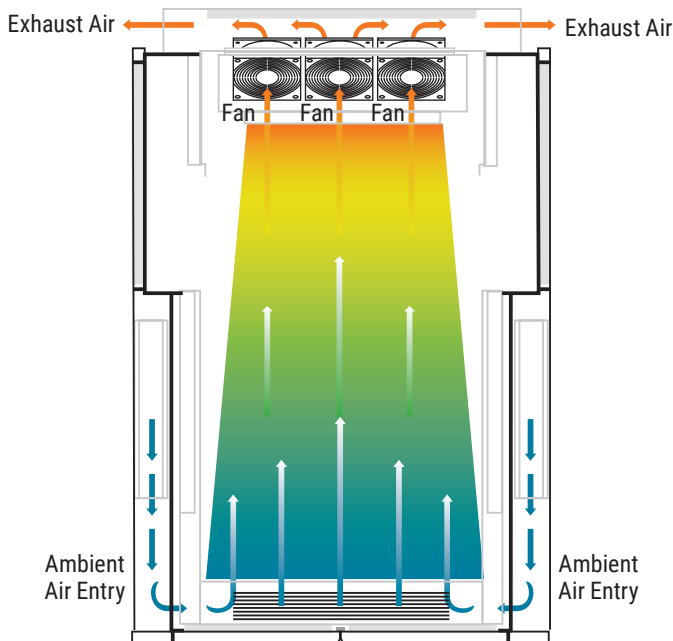
## Noise Comparisons on a Sliding Decibel Scale



# Server Cabinet Heat Dissipation

## QuietCab

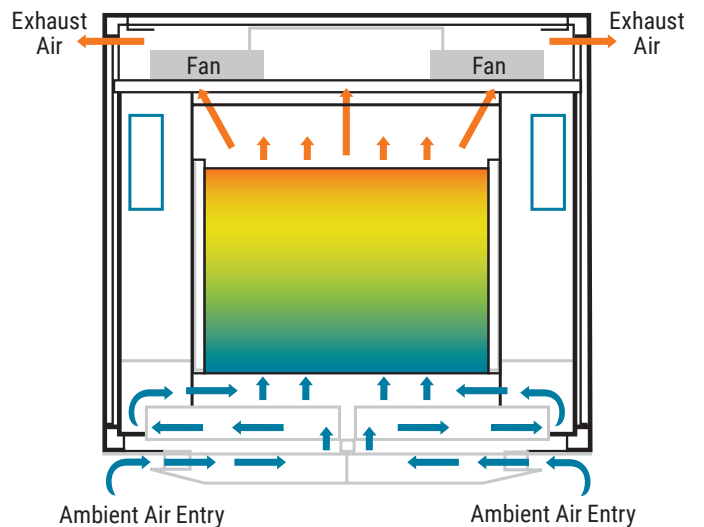
Provides up to 3.6-kW heat load removal.



QuietCab Airflow Characteristics

## Elite QuietCab

Offers unrivaled 12-kW heat load removal.



Elite QuietCab Airflow Characteristics

# QuietCab Soundproof Cabinets

- Put networking equipment where you need it – without the noise, space, or cost concerns.
- Acoustic foam lining reduces audible server and hardware noise by 15 dB to normal office background levels.
- Three, six, or nine fans depending on cabinet size keep equipment cool.
- They are available in walnut and light gray veneers, allowing them to blend in with other office furniture.
- Offered in three different sizes.
- Ideal for environments where you need to store network equipment near workers, such as offices, schools, medical offices, retail establishments, and more.
- Includes heavy-duty casters and a pre-installed power strip.
- 19-inch M6 rails are adjustable.
- Generous cable management space is built in.
- Accommodates all leading servers, including blade servers.
- Top of cabinet can be used as a workspace.
- Fully assembled – just plug it in!

## Very Accommodating

These 19-inch cabinets are extremely well designed and built to serve you for years to come. They hold all leading servers, including blade servers. To accommodate for different types of equipment, their 19-inch M6 mounting rails are adjustable. Load-bearing casters make these cabinets easy to move. They also feature locking front and rear doors. These cabinets are also designed with very generous cable management for both horizontal and patch cables.

## Made for Open Office Environments

Why spend money on a data center when all you need is the QuietCab? It's a very economical and smart solution for environments where you need to locate equipment near workers, such as open offices, schools, medical offices, etc. And the attractive, furniture-like appearance of QuietCab means you can put it practically anywhere. Choose from 12U, 24U, or 42U models.



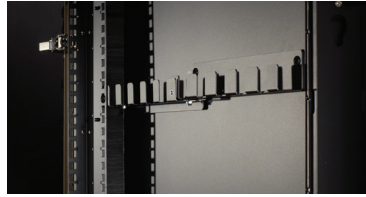
Cabinets are available in light gray veneer (left) and walnut veneer (right). See chart on the following page for details



## Cabinet Design



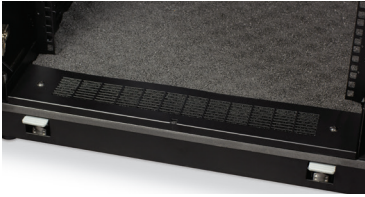
Acoustic foam lining reduces noise by 15 dB



Cable management is built in



High-quality hinges



Filtered air vents

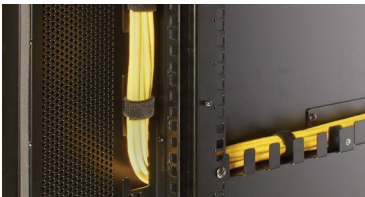


M6 mounting rails are adjustable



Includes pre-installed power strip

## QuietCab Accessories



Vertical Cable Managers  
(QCCMV-12U-S, QCCMV-24U-S,  
QCCMV-42U-S)



Cable manager front to back  
(QCCM-FB)



Filter kit  
(QCFK)

## QuietCab Specifications

	QC12ULG-R2	QC24UWA-R2	QC42ULG-R2
Usable Height	12U	24U	42U
External Cabinet Dimensions (Includes Casters)	27.7" H x 29.5" W x 44.6" D (70.4 x 75 x 113.2 cm)	48.7" H x 29.5" W x 44.6" D (123.8 x 75 x 113.2 cm)	81" H x 29.5" W x 44.6" D (206 x 75 x 113.2 cm)
Maximum Rackmount Unit Depth	36" measured from inside of front door to inside of rear door	36" measured from inside of front door to inside of rear door	36" measured from inside of front door to inside of rear door
Assisted Cooling Mechanism	Three ultra-quiet rear fan panel	Six ultra-quiet rear fan panel	Nine ultra-quiet rear fan panel
Assembled Weight without Rackmount Equipment	185.2 lb. (84 kg)	327 lb. (148.6 kg)	510 lb. (231.8 kg)
Maximum Distributed Load (Total Equipment Weight)	680 lb. (310 kg)	615 lb. (280 kg)	615 lb. (280 kg)
Casters	Supplied	Supplied	Supplied
Cable Entry	(2) top 2.4" dia. sliding grommet; (1) bottom 24" x 13.7" with removable panel and brush grommet	(2) top 2.4" dia. sliding grommet; (1) bottom 24" x 13.7" with removable panel and brush grommet	(2) top 2.4" dia. sliding grommet; (1) bottom 24" x 13.7" with removable panel and brush grommet
Cabinet Color	Light gray veneer	Walnut veneer	Light gray veneer
Dist Ingress Protection	Removable and washable filters are standard	Removable and washable filters are standard	Removable and washable filters are standard
External Height *	28.2" (71.6 cm)	49.2" (125 cm)	81" (205.7 cm)
Maximum Rail Depth **	30.9" (78.5 cm)	30.9" (78.5 cm)	30.9" (78.5 cm)
Attenuation Performance	<15 dB	<15 dB	<15 dB
Maximum Heat Load ***	1.2 kW	2.4 kW	3.6 kW

\* On casters. \*\* Between 19" mounting angles. \*\*\* See thermal guidelines.

# Elite QuietCab Soundproof Server Cabinets

- Incredibly quiet! Reduces equipment noise to a level below background noise in an average office or even to a whisper.
- Attenuates sound by an amazing 31 dB – the most you can get today in a soundproof enclosure.
- Innovative airflow design achieves a staggering 12-kW heat dissipation.
- Noise reduction is achieved without compromising cooling capability.
- An integrated IoT-device connects to multiple sensors that can be monitored and controlled through a Graphical User Interface via a browser or any other device.
- Real-time alerts and LEDs at the cabinet front will immediately notify you of any issues within your cabinet.
- 19-inch M6 rails are fully adjustable.
- Generous cable management space is built in.
- Accommodates all leading servers, including blade servers.
- Lockable front and rear doors keep equipment safe and secure.
- All doors and panels quickly remove and refit, making maintenance easy.
- Cable entry points via removable gland plates at the top and bottom of the cabinet.
- Includes load-bearing casters.





QCE12U-R2, front view



QCE24U-R2, front view



QCE24U-R2, rear view

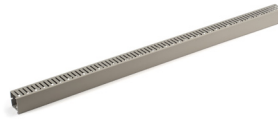
## Elite QuietCab Accessories



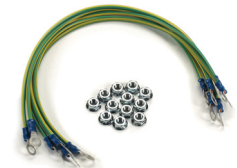
Elite QuietCab Cable Entry Box  
(QCE-CEB)



Elite QuietCab Filler Panels  
(QCE-SPFP-1U, QCE-SPFP-5U)



Elite QuietCab Vertical  
Cable Manager 42U  
(QCE-VM-42U)



Elite QuietCab Grounding Kit  
(QCE-GK)

## Elite QuietCab Specifications

	QCE12U-R2	QCE24U-R2	QCE42U-R2
Usable Height	12U	24U	42U
External Cabinet Dimensions (Includes Casters)	28.4" H x 30.7" W x 47.6" D (72.1 x 78 x 121 cm)	49.2" H x 30.7" W x 47.64" D (125 x 78 x 121 cm)	80.7" H x 30.7" W x 47.64" D (205 x 78 x 121 cm)
Maximum Rackmount Unit Depth	33.47" measured from front blanking plate surface to inside of rear door	33.47" measured from front blanking plate surface to inside of rear door	33.47" measured from front blanking plate surface to inside of rear door
Assisted Cooling Mechanism	(2) ultra-quiet rear fans	(2) ultra-quiet rear fans	(2) ultra-quiet rear fans
Assembled Weight without Rackmount Equipment	260 lb. (118 kg)	395 lb. (179 kg)	690 lb. (313 kg)
Maximum Distributed Load (Total Equipment Weight)	1,102.3 lb. (500 kg)	1,102.3 lb. (500 kg)	1,102.3 lb. (500 kg)
Casters	Supplied	Supplied	Supplied
Cable Access Dimensions	3" x 3"; (3) top + (3) bottom	3" x 3"; (3) top + (3) bottom	3" x 3"; (3) top + (3) bottom
Cabinet Color	Black with blue trim	Black with blue trim	Black with blue trim
Dist Ingress Protection	Optional removable and washable filter is available	Optional removable and washable filter is available	Optional removable and washable filter is available
External Height *	28.4" (72.1 cm)	49.2" (125 cm)	81" (205.7 cm)
Maximum Rail Depth **	33.5" (85 cm)	33.5" (85 cm)	33.5" (85 cm)
Power	1 Amp	1 Amp	1 Amp
Attenuation Performance ***	31 dB	31 dB	31 dB
Maximum Heat Load ****	12 kW	12 kW	12 kW
Delivery	Delivered fully assembled and ready to go	Delivered fully assembled and ready to go	Delivered fully assembled and ready to go

\* On casters. \*\* Between 19" mounting angles. \*\*\* 0.5 dBA is gained by using blanking panels. \*\*\*\* See thermal guidelines.

# WHY BLACK BOX

## **Expertise**

Black Box project engineers can assist with system assessment, design, deployment and training.

## **Breadth**

Black Box offers the most comprehensive suite of engineered AV and infrastructure solutions in the industry.

## **Support**

Reflecting our commitment to complete satisfaction, our dedicated team of highly trained support technicians is available by phone free of charge, every day of the year.

## **Warranties**

Multi-year warranties with multi-year extensions and replacement options are available.

## **Experience**

Providing leading technology solutions since 1976, Black Box helps more than 175,000 customers in 150 countries build, manage, optimize and secure IT infrastructures.

## **Center of Excellence**

Black Box offers a Center of Excellence, featuring professional services and support agreements that help optimize customers' systems and maximize uptime.

## **Service Level Agreements**

Our service level agreements give customers access to technical support, product training, dedicated application engineers and more.