

Product Introduction & Benefits

The F-GET-TF media converters were specifically designed to offer network designers the tools for migration from copper based Gigabit to fiber based Gigabit Ethernet. Now, migration or expansion of existing networks can be achieved with minimum cost and complexity. The converters are completely transparent when installed so the network performs exactly the way it would do normally-only now, it can migrate both copper and fiber mediums.

This flexibility in cabling allows network managers to put fiber cables anywhere

with in a network without changing the arrangement of copper based Gigabit segments. Their compact size allows the converter to be easily deployed in any narrow desktop location or used in wall-mount installation to save space. Several converters can be simultaneously installed by using the F-CHAS 12-slot 19" rack-mount chassis, rack-mount converter chassis.

The F-GET-TR takes advantage of Gigabit Ethernet technology suitable for transmission applications of larger bandwidth like Video, Image, and Voice over IP.

**Main Features:**

- Complies with IEEE 802.3ab 1000Base-T and IEEE 802.3z 1000Base-SX/LX standard
- Auto MDI/MDI-X support on RJ-45 port
- Auto polarity correction on RJ-45 port
- Local and Remote loopback test for first time installation and troubleshooting
- Low power consumption
- Extends distances up to 220m for multi-mode SX (80km with long haul single mode) under full duplex mode
- Compatible with other Gigabit 1000Base-T/SX/LX devices
- Status LEDs for easy monitoring of device status
- External power supply
- Chassis compliant (internal power supply)
- FCC Class A & CE approved

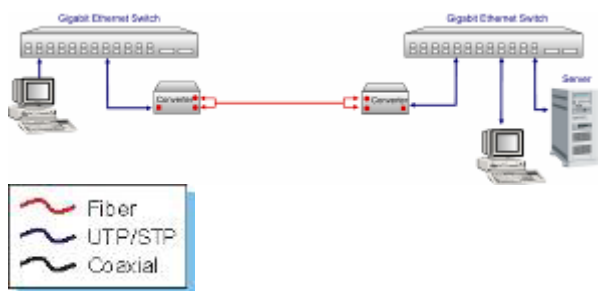


Specifications:

Standards:	IEEE 802.3ab 1000Base-T IEEE 802.3z 1000Base-SX/LX	MDI/MDI-X	Auto Selection
Connector:	1 x RJ-45 1 x Fiber (SC)	Power:	Power Input: 12V DC @ 0.8A, external power supply adapter Frequency: 47Hz to 63Hz
Max. Distance:	UTP: 100 meters (Cat. 5) Fiber: up to 80km (single-mode)	Temperature:	Operating: 0°C to 50°C Storage: -20°C to 70°C
Unit LED:	PWR: Illuminated for normal operation FD: Illuminated when working in full duplex mode LNK: Illuminated when receiving link pulses from compliant devices RCV: Illuminated or flashing when data packets are being transmitted / received	Humidity:	Operating: 10% to 80% RH Storage: 5% to 90% RH
		Emissions:	FCC Part 15 of Class A & CE approved
		Dimensions:	109.2 x 73.8 x 23.4mm (D x W x H)
		Weight:	160g
		Dip Switches:	DIP 1 – LLBK: Copper port local loop back Enable or Disable (On: Enable Off: Disable) DIP 1 –RLBK: Fiber port remote loop back Enable or Disable (On: Enable Off: Disable)

Applications:

The following illustrates typical applications for the F-GET-TR series. The actual distances will depend on several factors including the quality of cables used and the terminal equipment employed.



Ordering Information:

F-GET-TR-MM:

Gigabit 1000Base-T to SX Multi-mode Converter (SC Connector)

F-GET-TR-SM-10/40/80 (km):

Gigabit 1000Base-T to LX Single Mode Converter (SC Connector)

* Converters are also available for different long haul distance upon request, contact for availability.

F-GET-TR-SMS-20/40/60 (km):

Gigabit 1000Base-T to LX Single Fiber Converter, Transmitter (TX1310nm/RX1550nm, SC Connector)

F-GET-TR-SM-SF-20/40/60 (km): Single fiber Transceiver

Gigabit 1000Base-T to LX Single Fiber Converter, Receiver (TX1550nm/RX1310nm, SC Connector)

* WDM Single Fiber Converters must be installed with Transmitter and Receiver in pairs.