



HMX Series Hybrid Matrix Switcher User Manual

V1.0

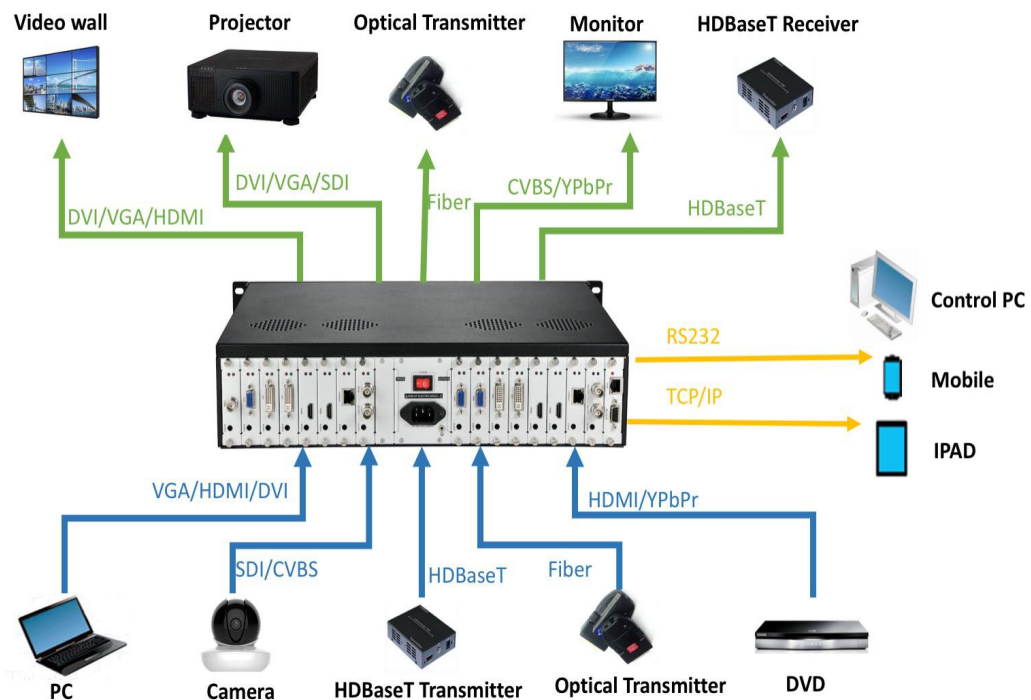
1. Overview.....	3
2. System Diagram.....	3
3. Front and Rear Panels.....	4
3.1 Front Panel.....	4
3.2 Rear Panel.....	5
4. Control Software Operation.....	5
4.1 Control Port Connection.....	5
4.2 Input Source Setting.....	5
4.3 Output Port Setting.....	6
4.4 Scene management.....	6
4.5 Software Function Setting.....	7
4.5.1 Connect Setting.....	7
4.5.2 System Setting.....	8
4.5.3 Input Sources Setting.....	8
4.5.4 Output Sources Setting.....	9
4.5.5 I/O Setting.....	9
4.5.6 User Management.....	10
4.6 Help.....	10
4.7 About.....	10

1. Overview

HMX is a powerful seamless modular matrix switcher, which integrates video wall processing and matrix switching in a single high performance chassis. With the advanced modular design, it provides options for various video interface combinations. Which provides a variety of I/O boards, including HDMI, DVI, VGA, SDI, HDBaseT, YPbPr, HDBaseT, Fiber Optical etc..

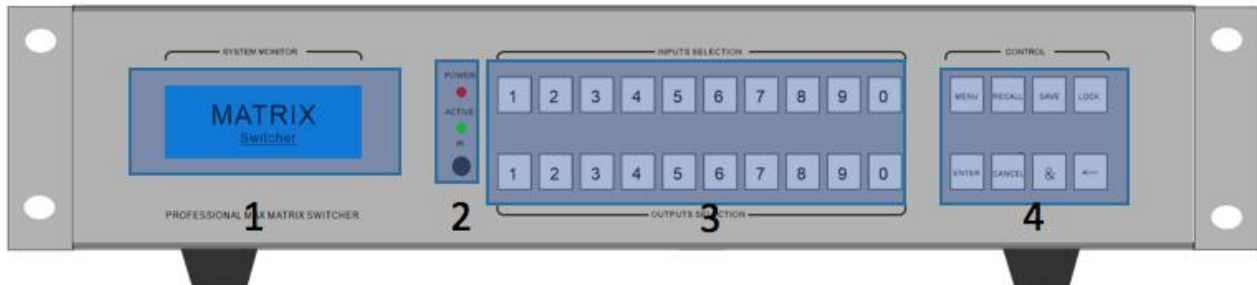
It is idea for application of conference room and control room etc.

2. System Diagram



3. Front and Rear Panels

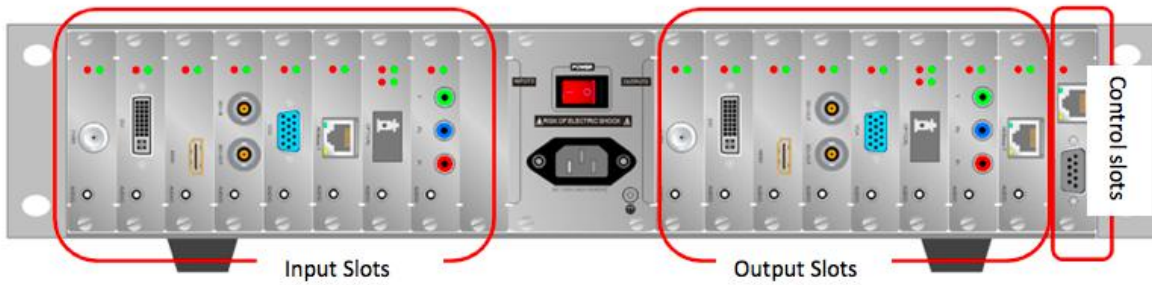
3.1 Front Panel



2U Chassis front panel

1. LCD display shows operation status.
2. Indicators of device working status
 - Power:** When the light is on, it means the device is powered on. When the light is off, the device is powered off.
 - Run:** The Run indicator flash indicating the device is working normally.
 - IR:** The device supports infrared remote control.
3. Number push buttons for inputs and outputs switching
 - The first row number push buttons for input signals selection
 - The second row number push buttons for output signal selection
4. Function push buttons for system management
 - Menu:** Menu function selection. The user can the set baud rate, buzzer, IP address and other settings with the coordination of the menu and 1st row numbers button.
 - Recall:** Recall of the saved scene
 - Save:** Save current scene
 - Lock:** Lock or unlock operation. Long-pressed 5 seconds to lock and the button lights will be on. Long-pressed 5 seconds again to unlock and the button lights will be off.
 - Enter:** Confirm execution button, to work with other function buttons.
 - Cancel:** Cancel the previous operation and return to main menu.
 - &:** Output multiple-selection coordination button. For example, switching input 1 to output 3, 4, 8, press the number 1 button in the first row and then the number 3 + & + 4 + & + 8 + Enter in the second row.
 - ←:** When switching multiple outputs at the same time, the user can cancel the wrong output selection in the previous step and re-select the correct output.


3.2 Real Panel

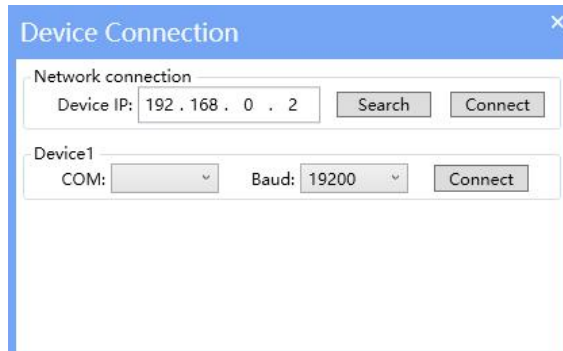


2U Chassis front panel

4. Control Software Operation

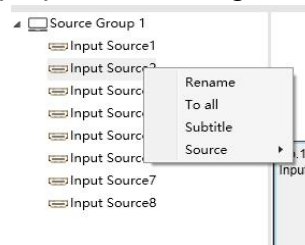
4.1 Control Port Connection

Click the menu **Connect**  to pop up a dialog box as follows. The default baud rate is 115200. Select the corresponding COM port and click the button **Connect**.



4.2 Input Source Setting

All input sources are put in the left side of the software interface. Right-click the corresponding input source to pop up the following interface:



Rename: Set current input source name

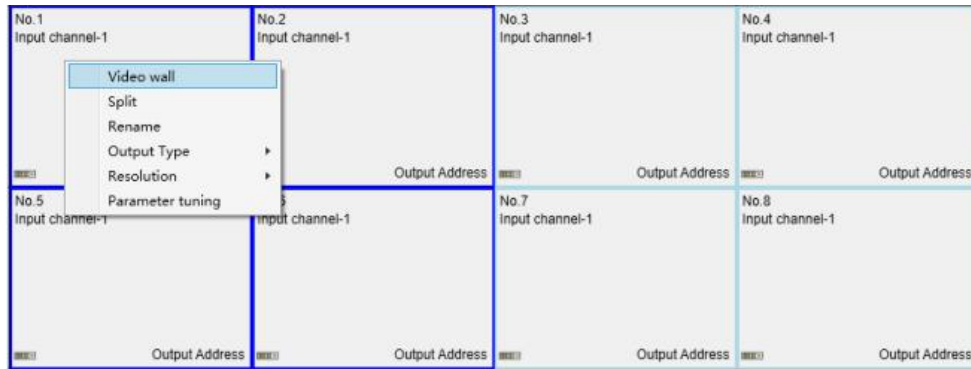
To all: One-click to switch the current input source to all outputs

Subtitles: Text over the input source. The text color and position are adjustable.

Source: Set current input signal interface type

Resolution: Set current input signal resolution

4.3 Output Port Setting



Video wall: Select some adjacent screens and right-click the menu for video wall display.

Split: Select a video wall display area and right-click the menu to back to single display.

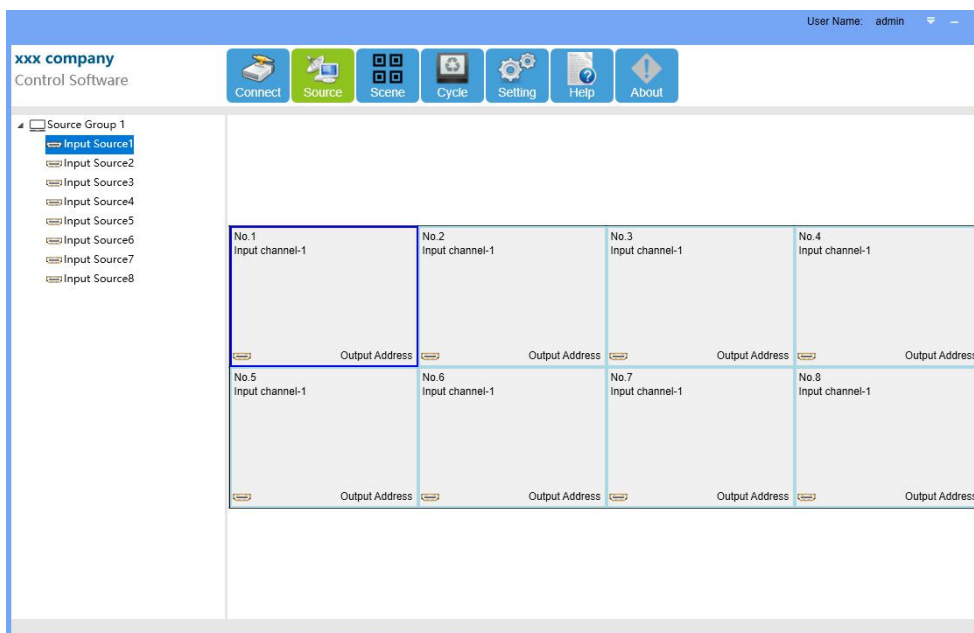
Rename: Modify the output name

Output Type: Choose the output port type according to the device configuration.

Resolution: Set the output resolution

Parameter tuning: Modify the output brightness, contrast, color etc..

4.4 Scene management

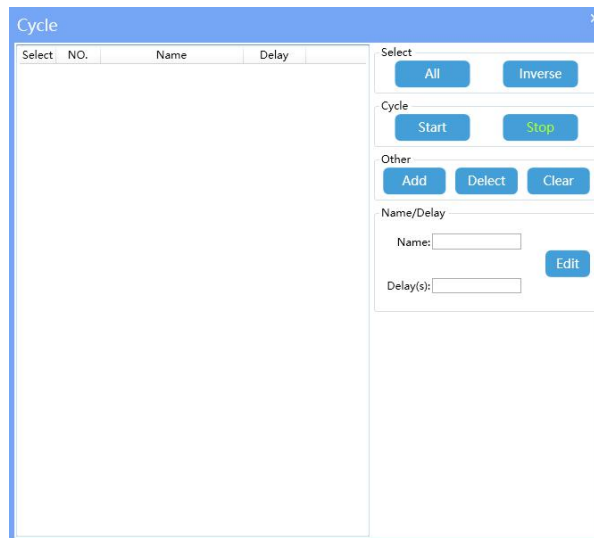


Manage: Manage current saved scenes, such as modify scene name, cycle etc.


Save: Save current scene

Recall: Recall saved scene

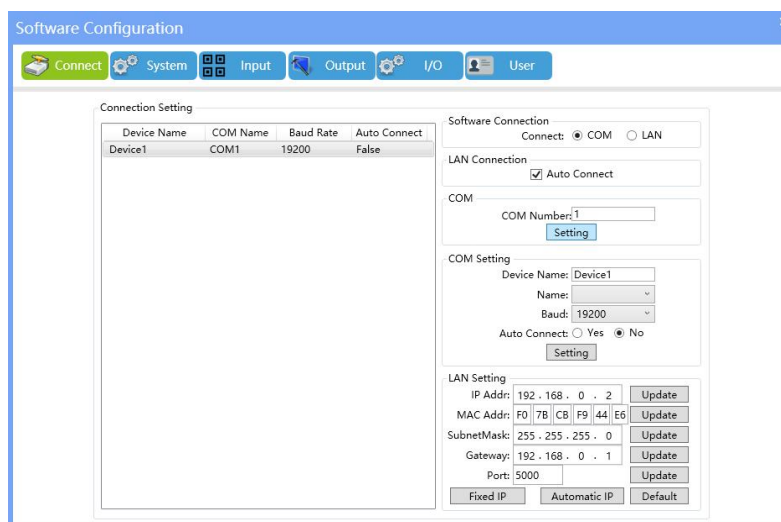
4.5 Scene Cycle



4.6 Software Function Setting

Click the menu **Setting**  to enter the software functions setting. This function requires administrator right.

4.6.1 Connect Setting

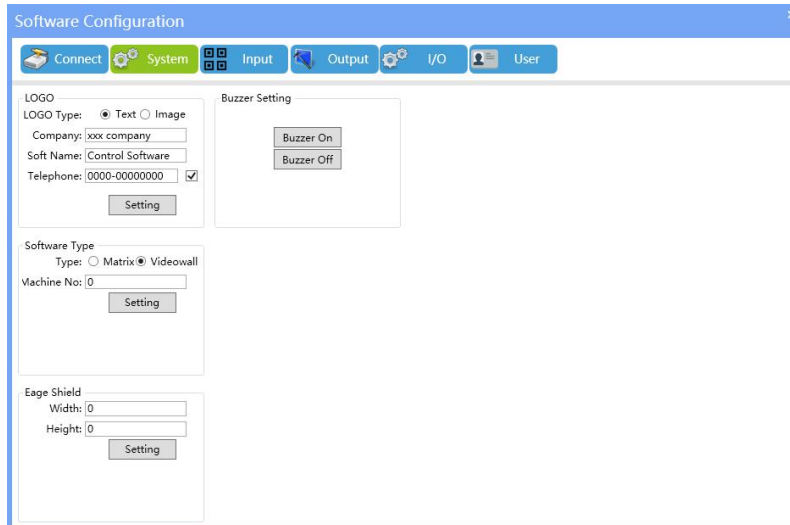


COM: Set current device COM ports numbers.

COM Setting: Set the device name, baud rate and auto connect.

LAN Setting: Set the current IP in fixed or automatic. For the fixed IP, the IP address, MAC address, subnet mask, default gateway, and port number are adjustable.

4.6.2 System Setting



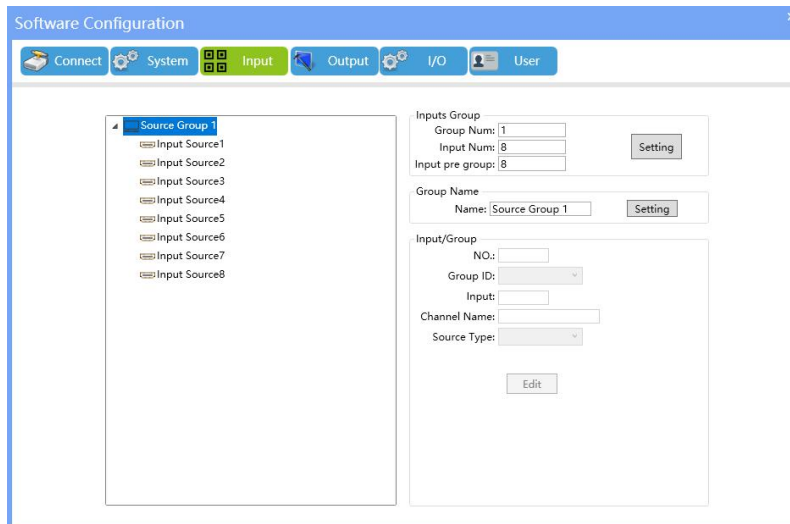
LOGO: Select LOGO type in text or in picture and add information of company, and software name. Then click the **Setting** button and re-open the software.

Software Type: Select matrix switcher or video wall software mode.

Edge Shield: Image pixel adjustment in the video wall mode.

Buzzer Setting: Buzzer on/off. In buzzer off status, there is no sound when the user operate the machine.

4.6.3 Input Sources Setting

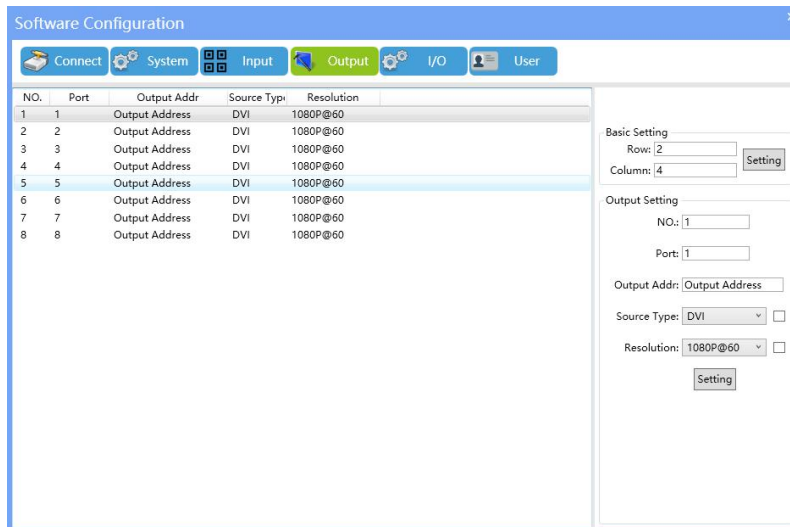


Inputs group: Set input source group management, each group source numbers are user-defined.

Inputs group name: Set the input source group name.

Inputs/groups parameter setting: Set the input source serial number, group ID, channel name and source type.

4.6.4 Output Sources Setting

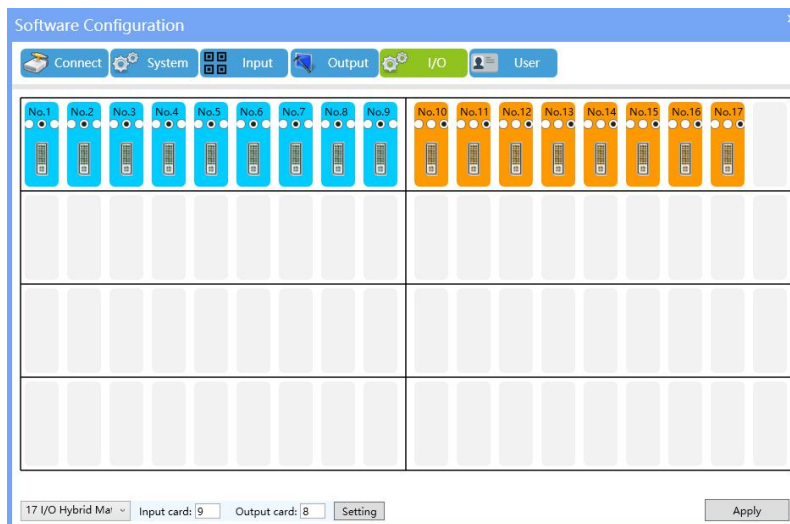


Basic Setting: Set current display unit layout

Output Setting: Set corresponding output port number, address name, source type etc..

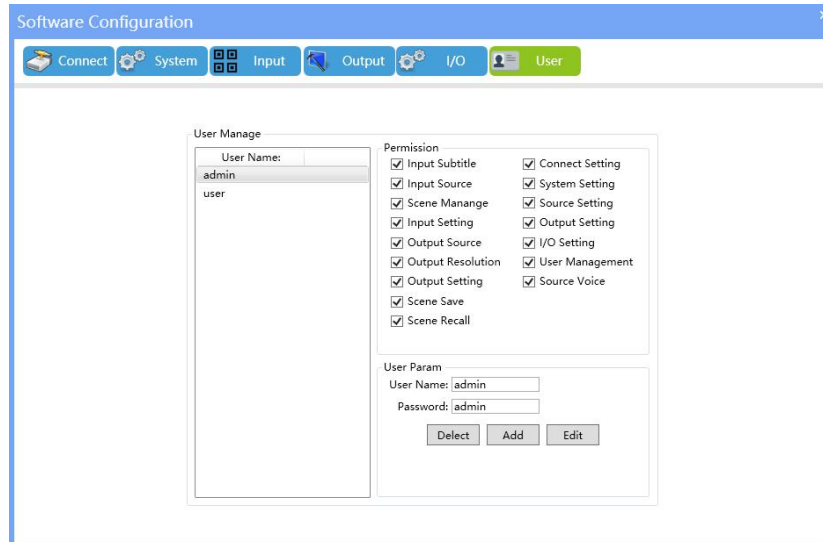
4.6.5 I/O Setting

Set the modular input and output cards numbers combination.



4.6.6 User Management

The administrator can add different user login names according to the actual situation and give them different operation permissions for hierarchical management.



4.7 Help

Click the Help menu  for software operation guide.

4.8 About

Check the **About** menu  for software version information.