

datavideo

12G **4K**
50/60 UHD

Datavideo SE-4000 Switcher Series



- | | |
|------------------|--|
| SE-4000 | 4K 8-Channel Switcher |
| SE-4000MU | 4K 8-Channel Switcher |
| HS-4000 | 4K 8-Channel Portable Streaming Studio |
| MS-4000 | 4K 8-Channel Mobile Video |
| OBV-4000 | 4K 8-Channel OB Van Studio |

www.datavideo.com

Switchers for the Era of 4K Omnimedia and Hybrid Broadcasting

The SE-4000 series is a next-generation switching station built for the era of all-media and hybrid broadcasting, integrating advanced technology and powerful features to meet the diverse needs of modern multimedia production. The SE-4000 supports broadcast-grade 4K video processing, capable of handling 8-channel UHD 4K50/60P as well as 12-Channel UHD 4K29/30P, offering producers greater flexibility for different production scenarios and performance requirements. Its 12G-SDI and HDMI 2.0 input interfaces allow seamless video connections and signal integration across a wide range of sources. Combined with physical full-function keys and a 5-inch full-color LCD touchscreen, the SE-4000 offers an intuitive, one-touch operation experience that simplifies program creation. In addition, the built-in audio mixer and a variety of professional video effects (such as chroma key, luma key, and PIP) allow synchronized audio and visual production with polished, broadcast-quality results. By combining cutting-edge functionality with user-friendly design, the SE-4000 series stands out as a versatile, high-efficiency switcher, perfectly suited for today's hybrid broadcasting and multimedia production environments.



Large Corporate Meeting



Interview Program in a Multi-Camera Virtual Studio

P.4



4K 8-Channel Digital Video Switcher
SE-4000

P.26



4K 8-Channel Digital Video Switcher
SE-4000MU

P.28



4K 8-Channel Portable Video Streaming Studio
HS-4000

12G

4K
50/60 UHD



Concerts or Entertainment Programs



Mid-to-small scale sporting events

P.34



4K 8-Channel Mobile Video Studio
MS-4000

P.36



4K 8-Channel OB Van Studio
OBV-4000

4K 8-Channel Digital Video Switcher SE-4000



12G

4K
50/60 UHD



The Datavideo SE-4000 is a full-featured 4K switcher that emerged in the era of Omnimedia and hybrid broadcasting. It supports broadcast-grade UHD 4K@50/60P across 8 channels, and also operates as a 12-Channel UHD 4K@29/30P switcher, offering greater flexibility for different production environments and performance needs.

Equipped with 12G-SDI and HDMI 2.0 input interfaces, it allows you to perform traditional physical full-function key switching or use the stylish and convenient 5-inch full-color LCD touchscreen for simple and comfortable program creation with one-touch, one-function operation.

It includes powerful features such as AUX, XPT, four color keyers, Picture-in-Picture (PIP), and Downstream Keyer (DSK), enabling effortless implementation of professional and high-quality live production for a wide range of events.



4K 8-Channel Digital Video Switcher SE-4000

Control Panel



Control Panel Rear Panel





Main Unit
Panel



Main Unit
Rear
Panel

Intuitive and easy to understand, one-key one-function

With an intuitive and easy-to-understand operating interface, you can effortlessly achieve various broadcasting effects without complicated compound key commands. This includes multi-step and multi-effect arrangements, which can be combined into a single button using User Memory. Moreover, with the User Image Swap function, you can update the corresponding icons, clearly indicating the pre-stored effect of each button. Professional functions are clear at a glance and ready to be activated with just one touch.



1 User Memory



2 Wipes



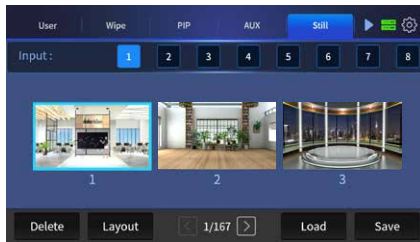
3 Picture-in-picture



4 Auxiliary outputs



5 Still frames



6 Keyers



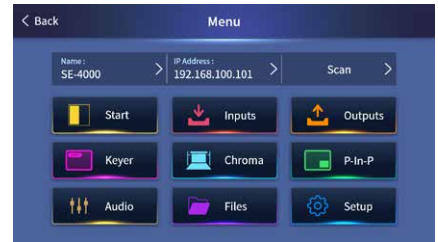
7 Cross Point



8 Audio



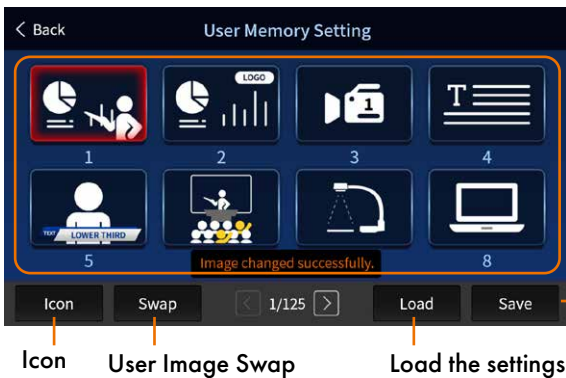
9 Main Menu



User-Defined Configuration



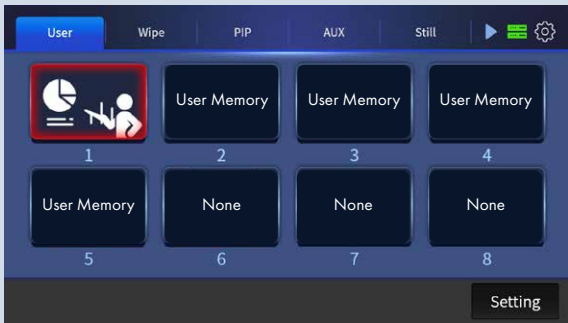
A total of 999 user parameter presets are available, capable of recording the status of each camera position and PIP settings. Additionally, the User Image Swap function allows users to replace icons with preset parameter settings for a more intuitive understanding and easy recall.



For chroma keying, even in the same shooting environment, different camera positions, angles, and lighting changes will result in other chroma key parameters. This function allows storing the key parameter settings for various camera positions separately. It can be quickly recalled with a single button press, instantly switching camera positions along with their settings and background channels. This brings a whole new level of operation, similar to a multi-camera chroma keying setup, allowing virtual studio production with multiple camera positions using just one switching station.

User Image Swap

Replacing the icons after customization so that users can have a more intuitive understanding and utilize the parameter settings effectively. Currently, there are 380 icons available for selection.



There are currently 380 icons available for selection.

Wipe Transition Effect



WIPE Transition Effects

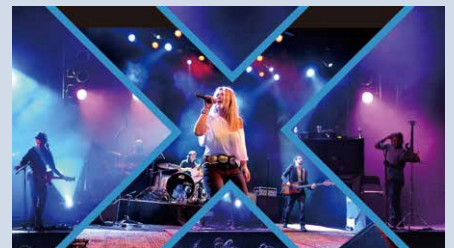
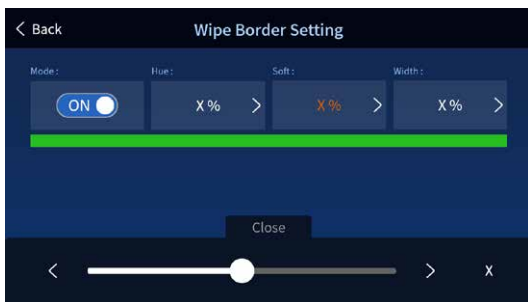
Border Settings

Reverse the WIPE direction

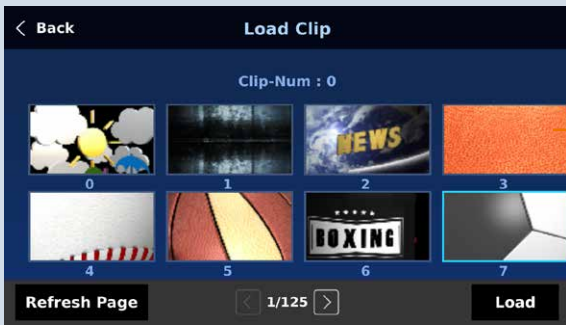
32 sets (including all the reverse options, making it 64 in total) of creative WIPE effects are available for creating unique programs. Transition effects are crucial in program production, and we have 64 eye-catching WIPE effects built-in. You can individually control border color and thickness and add softness to the edges, making your WIPE effects look distinctive and innovative.

Border Settings

Enabling this option allows you to adjust border color, edge softness, and width parameters.



Stinger Transitions

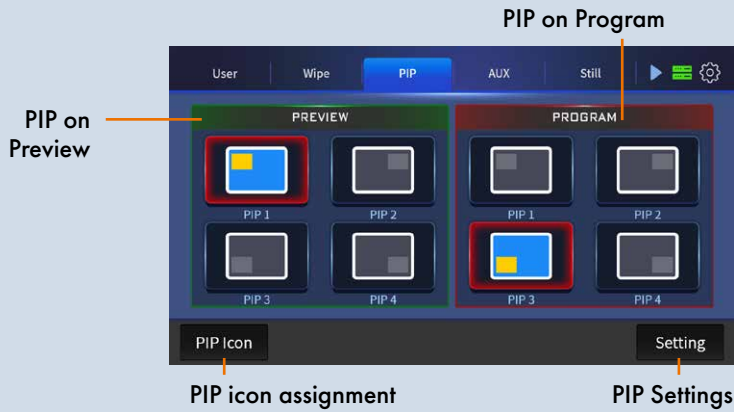


Clip

Explore a range of pre-saved animated stinger transitions to enhance your visual effects. Additionally, import your custom Stinger Transitions and Animated Logos for a personalized touch. The switcher comes equipped with two sets of built-in 4K stinger transitions and 17 sets of 1080p stinger transitions, offering versatility and creative options for your projects.



Picture-in-Picture Settings



3D and versatile PIP effects

The two built-in PIP (Picture-in-Picture) arrangements form versatile effects that can be displayed simultaneously. Apart from the preset corner positions, you can freely adjust the size, position, and aspect ratio to your liking. Additionally, you can crop the PIP to display it as a square and add a full 3D PIP frame with custom color matching, showcasing advanced PIP effects.

Changing PIP Size and Position

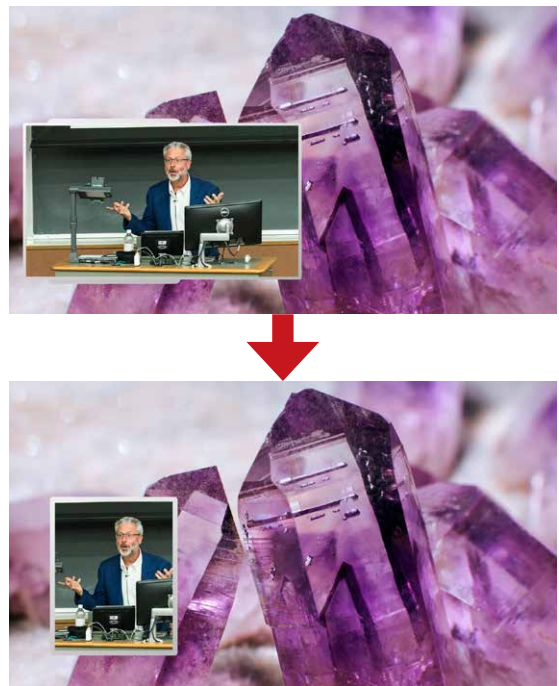
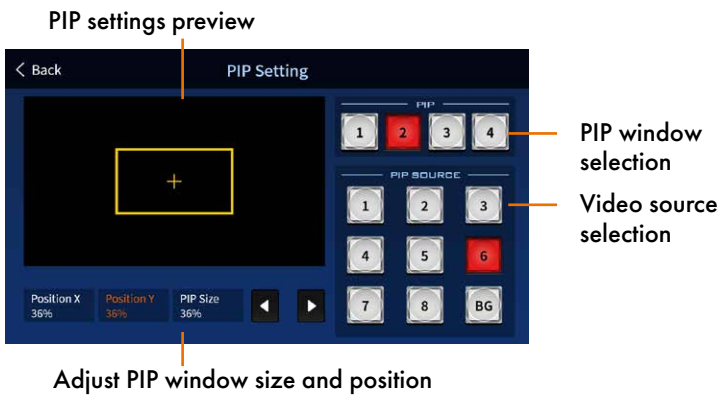
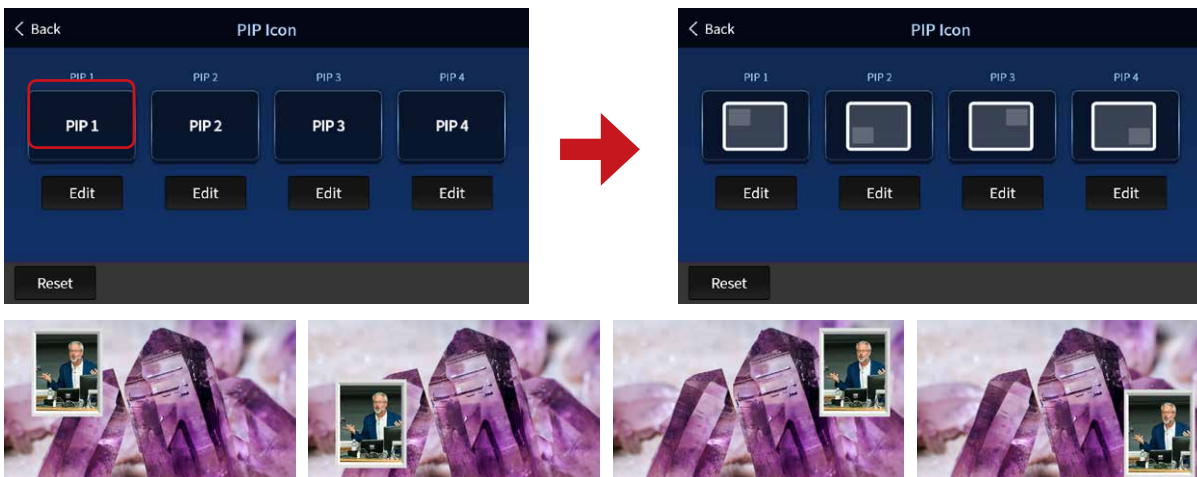
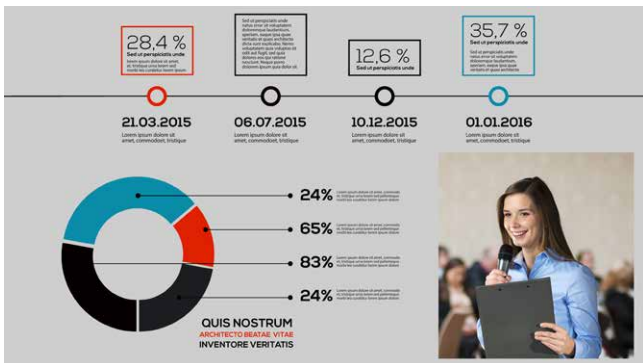


Illustration of PIP position changes according to the preset settings



Multi-element Material Overlay Method

The multi-element material overlay method is a great tool to enrich your visual content. Appropriately superimposing your carefully crafted materials onto the screen enhances the visual aesthetics, adds content information, and introduces characters, all of which are beneficial. Moreover, it is easy to use and brings life to your production.



Auxiliary Output Settings



Output ports

Video sources

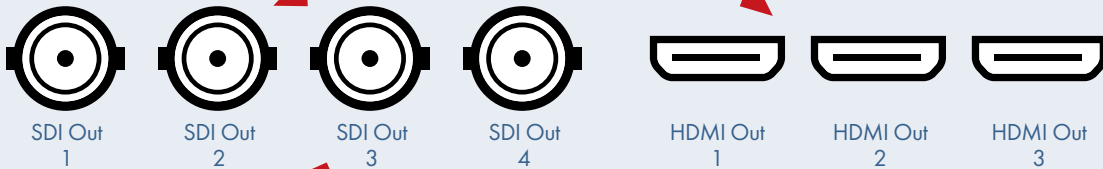
Flexible and Versatile AUX Multi-output

The SE-4000 features four 12G-SDI and three HDMI 2.0 outputs, offering up to 7 assignable output channels. Users can freely route Program, Preview, Multiview, Clean Feed, or input sources to different displays such as main screens, side monitors, or control room outputs. With matrix-style switching, SE-4000 ensures flexible multi-zone visual delivery, ideal for professional live productions with diverse display requirements.

Assign Source : Through 7 output interfaces, you can freely assign signal sources



Assigned output ports



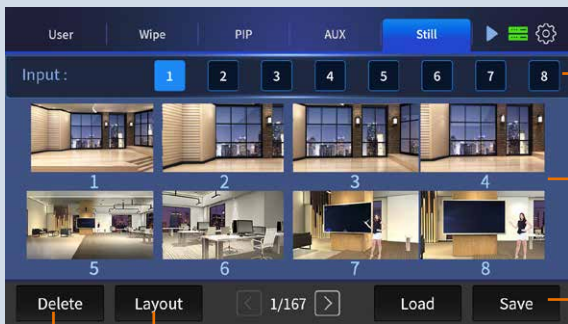
SDI Out 1 → Program (Program IMAG)
 SDI Out 2 → Program (Monitoring)
 SDI Out 3 → Program (Recorder)
 SDI Out 4 → Clean PGM (Footage Recording)

HDMI Out 1 → Multiview (Switching Operations)
 HDMI Out 2 → Multiview (Assistant Director / Remote Camera Monitoring)
 HDMI Out 3 → CH7 (Program IMAG Conference PPT Output)

Output Display



Still image thumbnails



Input channels

Still image thumbnails

Load and Save

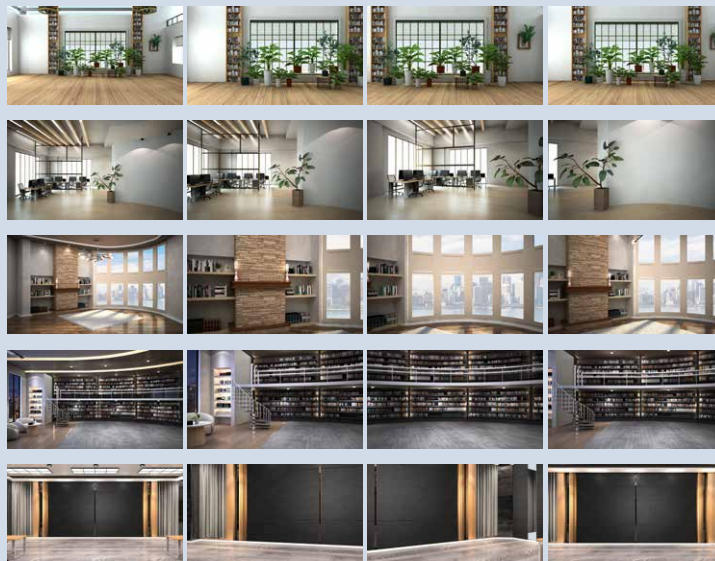
Delete You can show three or eight images on the same page.

With up to 250 storage slots (4K), you can freely store program sequence images, various scene materials, full-size logo images, school emblems, departmental images, and more. During program production, you can capture captivating scenes, save them, and use them as a treasure trove for creating your programs.

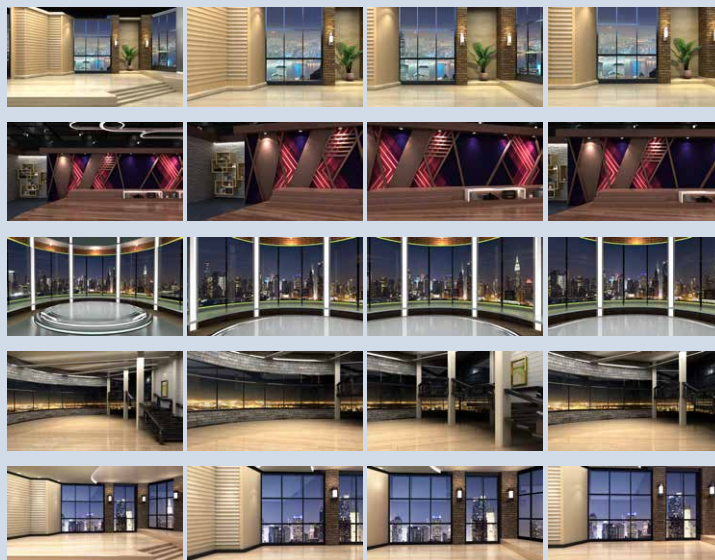
Pre-saved 10 virtualsets with each having 4 configurable camera angles; save up to 40 virtualsets.

In addition to the static images you save, SE-4000 also comes with 10 sets and 40 exquisite high-quality 4K virtual backgrounds. These backgrounds can be combined with the left, front, right, and front long-shot safe camera positions, making them especially suitable for conference live streaming and interview program shooting.

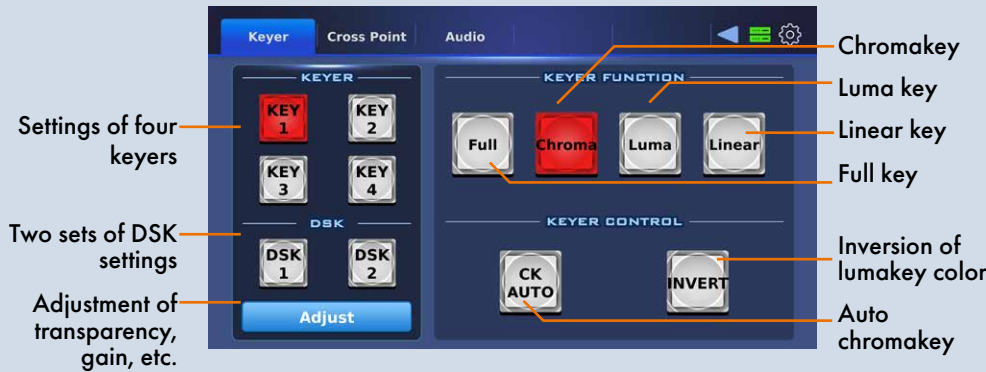
Conference



Show



Upgrade directly to virtual studio program production



In addition to the static images you save, SE-4000 comes with up to ten sets, a total of forty high-quality and exquisite 4K virtual backgrounds. These backgrounds are designed for use with the left, front, right, and front long-shot safe camera positions, making them especially suitable for conference live streaming and interview program shooting. All you need to do is prepare the green screen, lighting, and cameras and let SE-4000 take care of the rest.

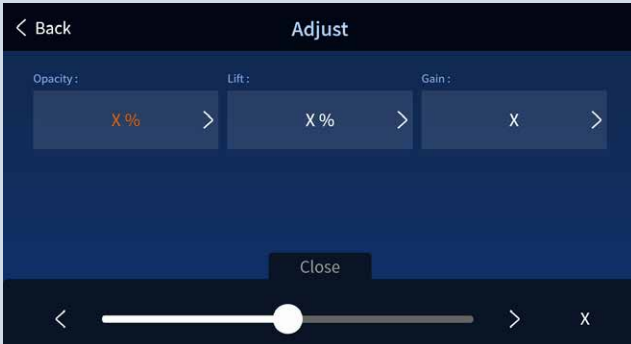
Chroma key

4 Channels + 4 Virtual Backgrounds Creating Four Virtual Shooting Effects

Four UHD ultra-high-definition camera videos, combined with pre-stored UHD ultra-high-resolution full 3D virtual image materials, transform into a four-camera virtual studio program production, unmatched in liveliness and realism, creating myriad visual effects.

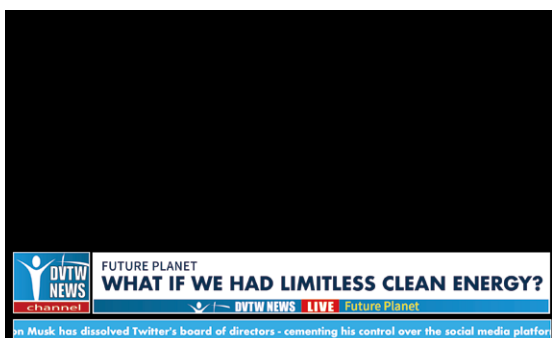


Luma Key, Chroma Key, Linear Key, Downstream Key



Professional and convenient Luma Key, chroma key, linear key, and downstream key are essential indicators for enhancing program production quality. The levels of various vital signals, whether it's the commonly used brightness key, widely used chroma keying for image extraction, or the linear key with built-in matte attributes, along with the various always-on-top downstream keys, all contribute significantly to elevating program refinement and providing higher-quality program effects.

Luma Key



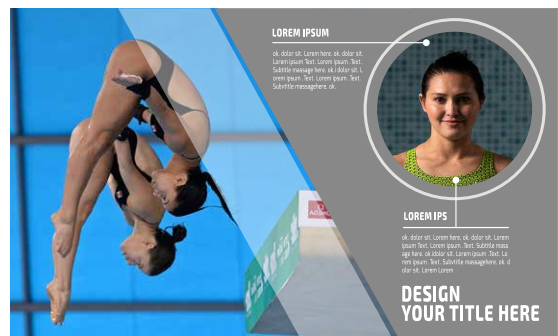
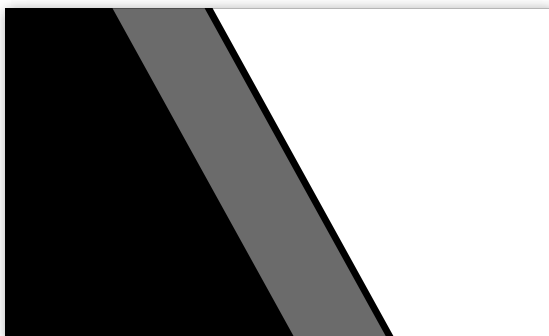
Logo

Program Logo

Built-in two independent Logo channels, capable of overlaying static or dynamic corporate logos, emblems, or symbols, making it a powerful tool for corporate presentations, product launches, and business training. It facilitates the establishment of a comprehensive visual identity and helps strengthen the company's cohesion.



Linearkey



Cross Point



Keyer **Cross Point** Audio Camera

INPUT
1 2 3 4 5 6 7 8 9 10 11 12

VIDEO XPT
1 2 3 4 5 6

AUDIO XPT
7 8 9 10 11 12 OFF

Audio Setting

Select an input channel

Assignwan output channel

Video Crosspoint

Audio Crosspoint

Audio Settings



XPT Multiple Designated Outputs, Freely Assignable

You can freely set the video or audio Cross Points, reordering them according to the operator's habits, providing greater flexibility in the Multiview display.

VIDEO IN

4 HDMI 10 3 HDMI 9 8 HDMI 12 7 HDMI 11

VIDEO XPT

1 2 3 4 5 6

7 8 9 10 11 12 OFF

Video XPT

Audio XPT

Audio Setting

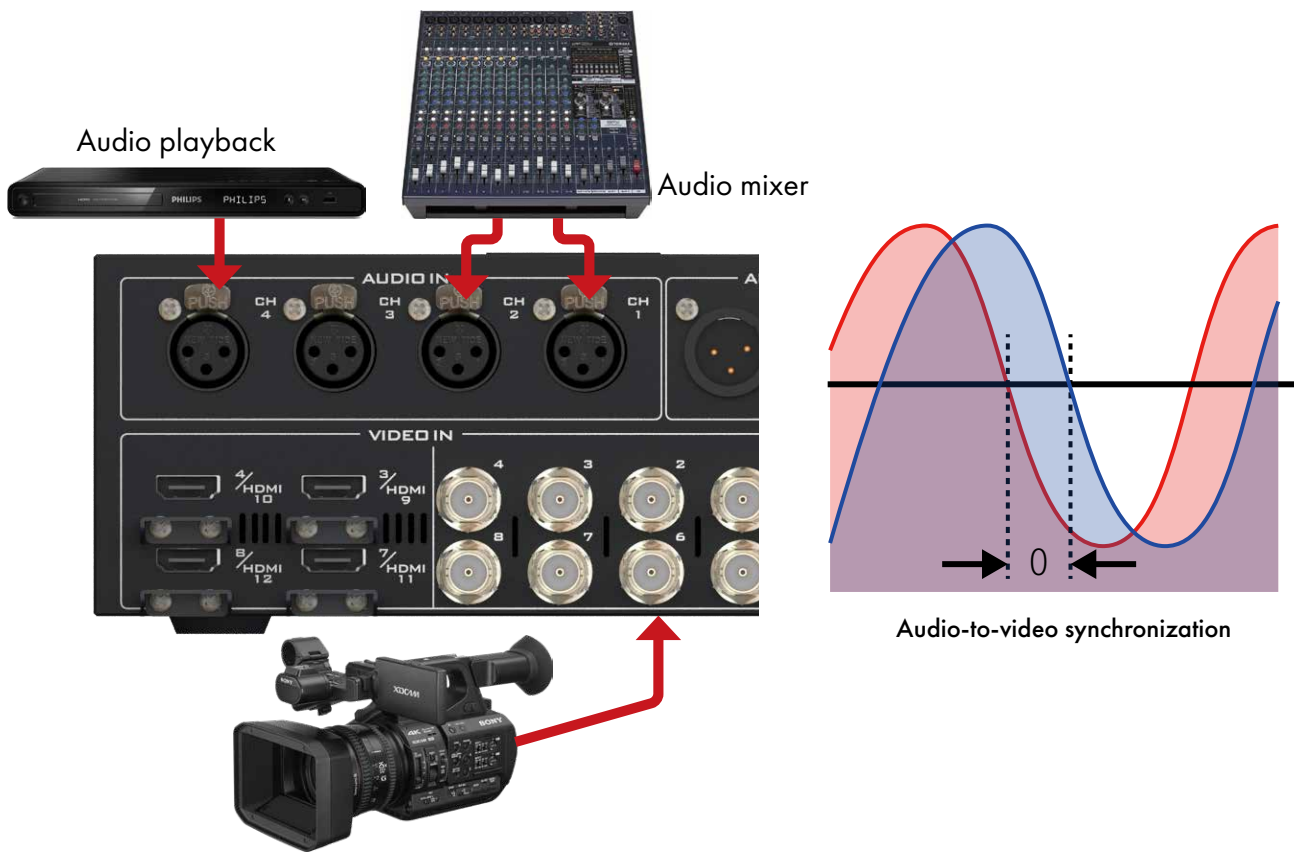
Audio



The Datavideo 4000 series comes equipped with an integrated audio mixer function. This feature allows users to select any audio channel from nine channels available options and mix it with any other channel of their choice. Additionally, the audio mixer function follows a flexible and user-friendly approach, providing enhanced control over audio elements during production or broadcasting.

Professional Audio-to-Video Synchronization

There are times when video and audio become out of sync during video production or live video streaming. Most users would feel annoyed when such an issue arises. Videos are usually processed at 25 or 50 frames per second and the audio is delivered in milliseconds. Due to different processing times and network latencies, you will thus receive out of sync video and audio. The SE-4000's professional built-in audio delayer is designed to ensure precise audio-to-video synchronization by delaying and calibrating the audio received. Ultimately, the sound reproduced by stereo speakers should match the video played on the big screen, providing audience with a pleasant viewing experience.

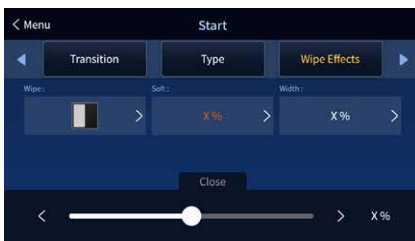


Menu



To achieve the "one-key, one-function" layout, we have adopted a five-inch full-color, high-definition, anti-glare, and oil-resistant touch screen. The detailed icons enhance content recognition and ease of understanding. All the adjustments for various function menus are concentrated here, allowing complex multi-step settings to be condensed into a single button, providing an instant response with just a touch. The touch screen also complements the physical-mechanical button panel, creating the most user-friendly and efficient operating interface.

General Settings



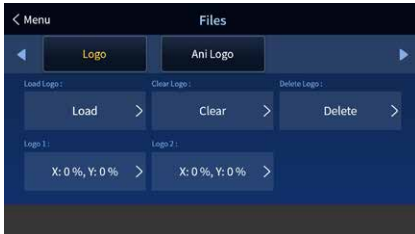
Input Settings



Output Settings



Still and Animated Images



System Setup



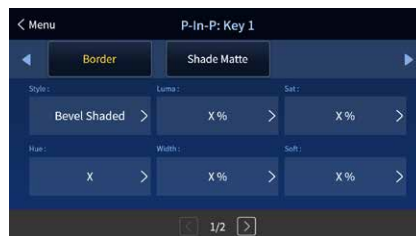
Keys



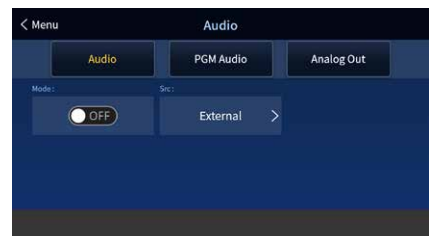
Chromakey



Picture-in-Picture



Audio Settings



Flexible 4K Switching Architecture for Seamless 8/12-Channel Input Control

The SE-4000 is a highly flexible 4K video switcher that supports both 8-channel UHD 4K50/60P and 12-Channel UHD 4K29/30P input configurations—offering production teams the versatility to adapt to different resolution and performance requirements.

With its smart architecture, users can instantly switch between 8-channel and 12-Channel modes directly from the settings menu, without the need for hardware changes or reboots. This dynamic switching capability allows operators to optimize system performance on the fly, depending on the scale and needs of the production.

Whether you're working on high-frame-rate sports coverage or multi-camera corporate events, the SE-4000 delivers the flexibility and power of a broadcast-grade 4K switcher, all within a streamlined and intuitive control environment.



8-Channel UHD 4K50/60P Switcher Input Configuration

Input Channels	1.2	3.4	5.6	7.8	9.10	11.12
Input Interface		 OR		 OR		

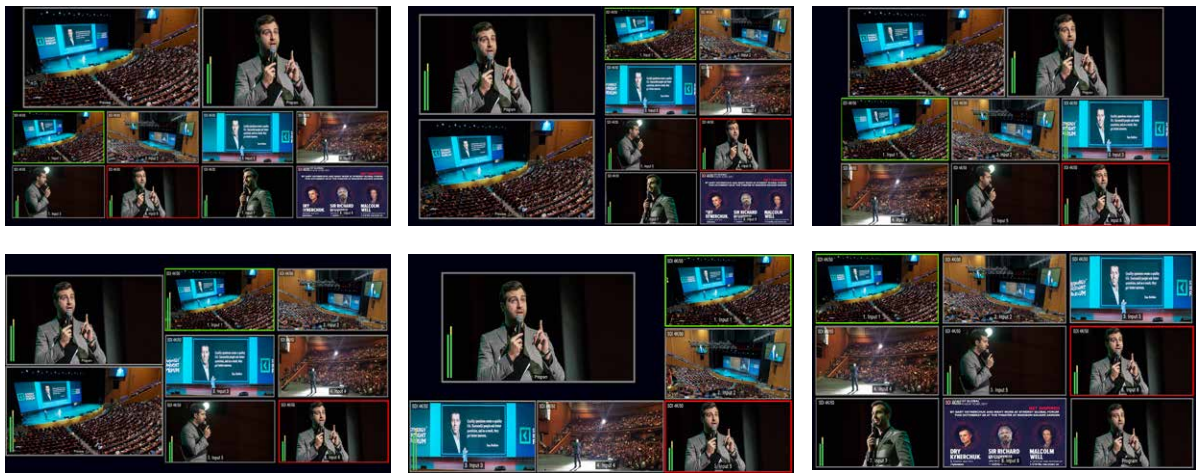
12-Channel UHD 4K29/30P Switcher Input Configuration

Input Channels	1.2	3.4	5.6	7.8	9.10	11.12
Input Interface						

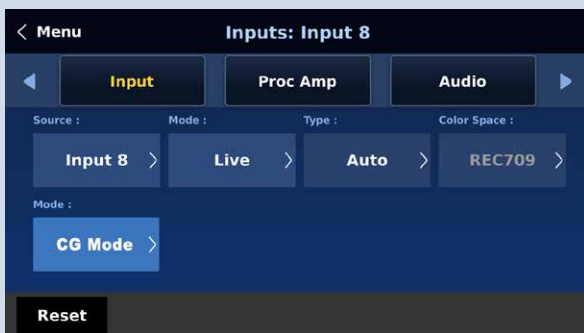
Multiview Layouts



Datavideo 4000 series video switcher offers 6 different multiview layouts for monitoring. These layouts likely provide users with flexibility in arranging and viewing multiple video sources simultaneously, enhancing the overall usability of the video switcher for various production setups.



CG



A video switcher equipped with a character generator (CG) feature plays a pivotal role in television production and broadcasting. The 4000 series switchers seamlessly integrate with Datavideo's CG-500, enabling the creation and overlaying of graphics, text, and various visual elements onto the video feed effortlessly through the HDMI input.



DVIP - The Soul of System Integration

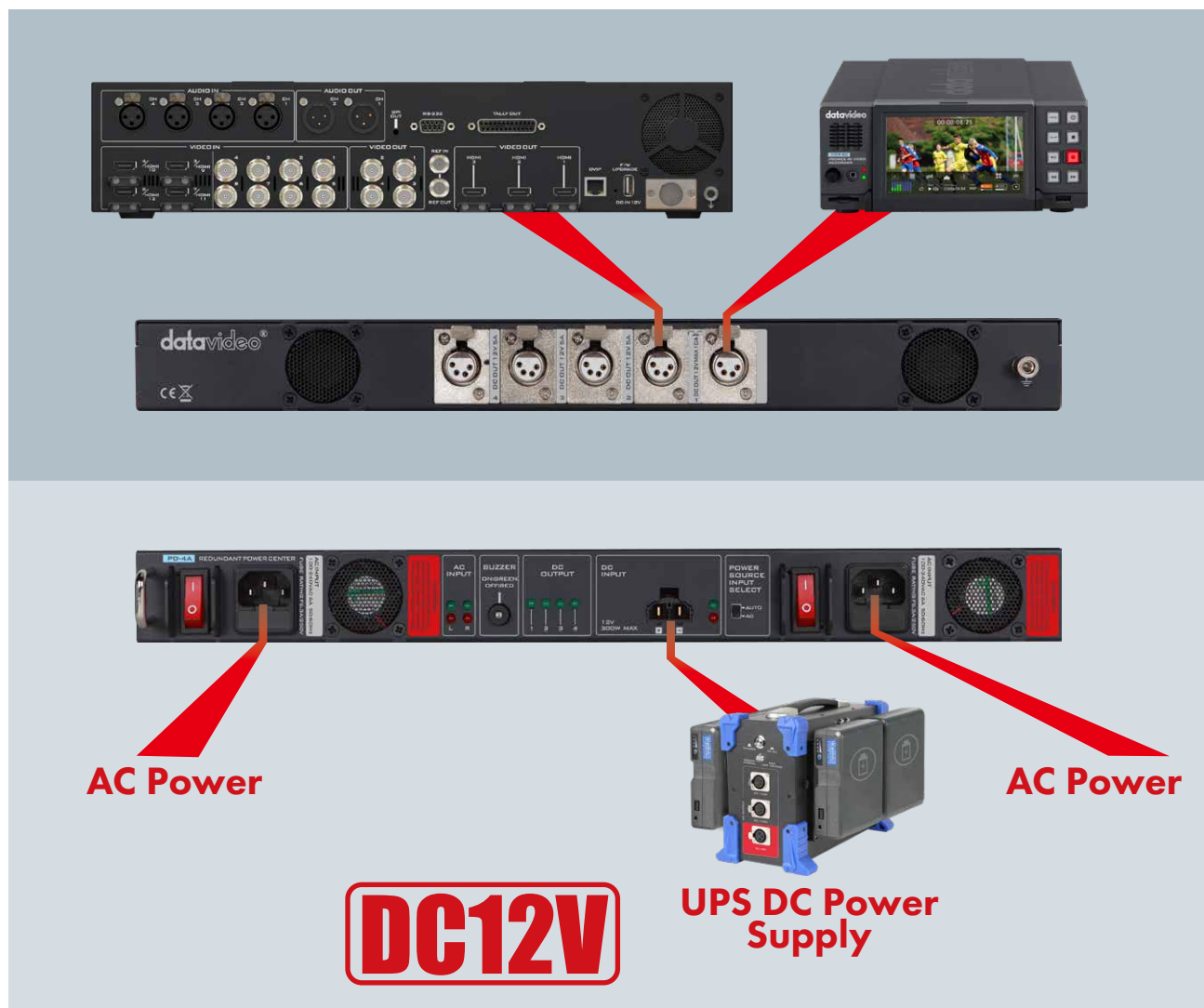
With professional and reliable standalone products in place, there is still a need for a seamless communication system to connect them all. DVIP is a dedicated communication protocol designed for integrating various products. It links front-end cameras, switchers, and back-end devices such as recorders and encoders into a network, enabling seamless connectivity among all the equipment. It can even interface with third-party system integration devices, creating a more comprehensive and user-friendly solution.



PD-4A Redundant Dual Power Supply Center (Optional)

In mid-range and high-end products, the power system is the most critical but easily neglected part of the device. The DC power system is stable and highly efficient with low power consumption. It is also easy to use and safe. Simply connect the SE-4000's power adapter that has a locking mechanism to the 4 pin XLR socket at the rear of the main unit to start supplying sufficient and stable power to the switcher with an ease of mind.

In addition to the supplied power adapter, the latest PD-4A Redundant Power Center designed for applications with a high safety requirement is your another option. It has switchable AC and DC input sources. The dual AC inputs provide extra security to ensure a stable power supply. The PD-4A is thus a great device for various types of system integration in different video production environments. There are also other PD-series power centers. All you need is a power cable to be able to connect all other Datavideo peripheral devices such as MS switchers, OBVs, standalone switchers, monitors, recorders, intercoms, audio mixers, streaming encoders, etc. The power centers simplifies the workflow and are designed to be eco-friendly.





4K 8-Channel Digital Video Switcher

SE-4000MU

SE-4000MU Rear View



12G

4K
50/60 UHD

The SE-4000MU 4K Video Switcher is a high-performance, 12-input 4K live production switcher designed for broadcast studios, AV environments, and large-scale live events. It delivers seamless UHD 4K50/60P video processing, ensuring high-quality visuals and smooth, dynamic production.

Equipped with 12G-SDI and HDMI 2.0 inputs, the SE-4000MU supports flexible multi-camera switching, allowing seamless integration of diverse video sources. This makes it an ideal solution for complex live productions requiring high-resolution output.

A standout feature of the SE-4000MU is its Ethernet and RS-232 protocol support, offering system integrators the ability to customize control solutions tailored to specific production workflows. This ensures efficiency, precision, and reliability in professional broadcasting and AV setups.

Whether used for television broadcasting, corporate events, live concerts, or hybrid productions, the SE-4000MU provides real-time control, high-end visual effects, and seamless integration with existing AV systems—delivering professional-grade performance for modern production environments.



4K 8-Channel Portable Streaming Studio HS-4000





HS-4000 is a lightweight, portable, and powerful mobile studio solution suitable for applications in broadcasting, conferences, live events, and hybrid activities. It supports video resolutions of up to 4K 60FPS, accepting video inputs from PCs, multimedia players with HDMI 2.0 output, and 12G-SDI cameras. In addition to traditional physical buttons, it features a 5-inch touchscreen with customizable icons, user memory for transition animations, a chroma key, a luminance key, DSK, PIP, and other functions.

Equipped with a high-quality 17.3-inch UHD 2160p video monitor, it provides a multiview display. HS-4000 also offers easy-to-use recording and live streaming encoders, enabling simultaneous live broadcasting and high-quality MP4 file recording with audio-video synchronization.

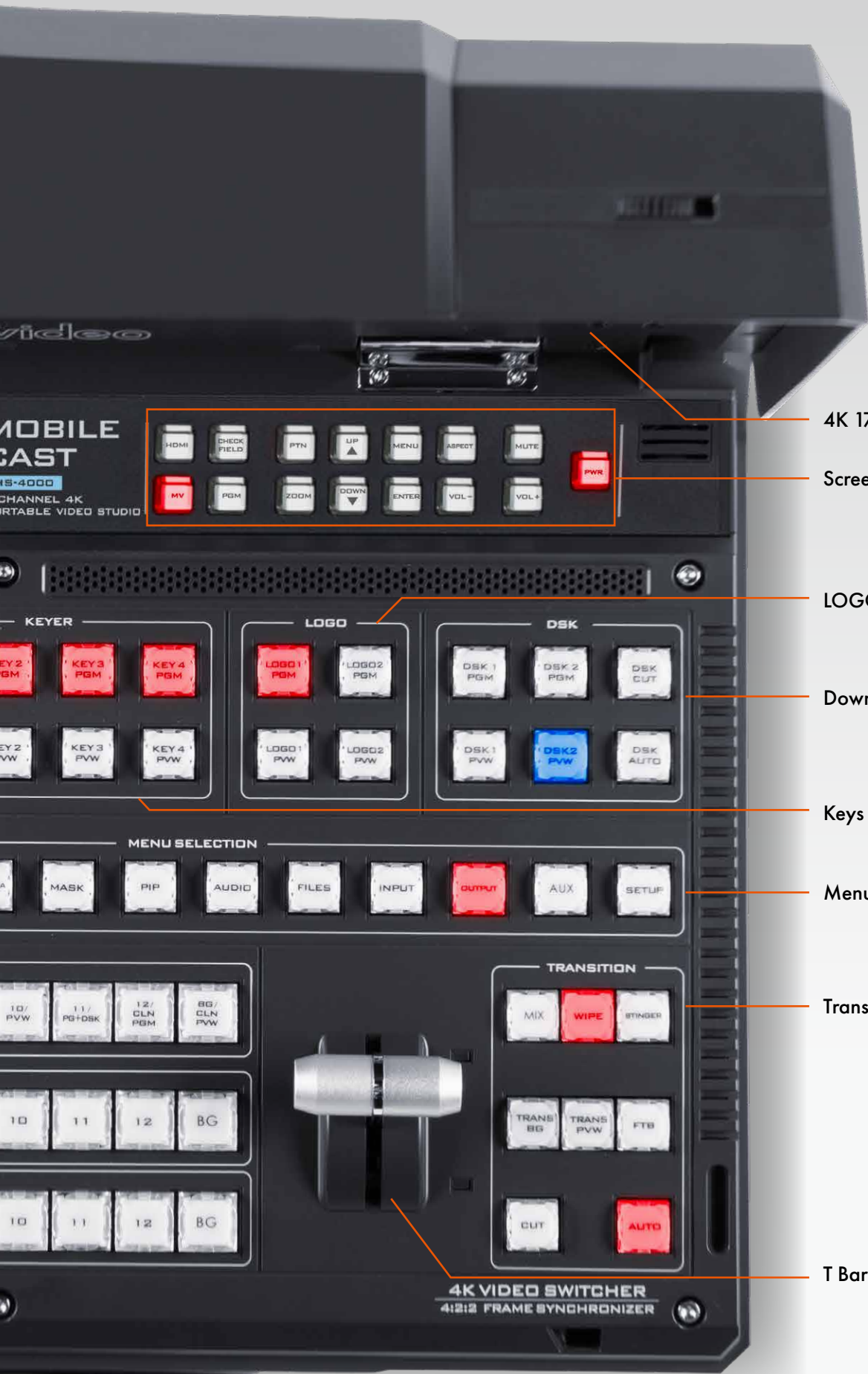
This mobile studio combines advanced technology and convenience, meeting the diverse needs of modern multimedia production.

Built-in 4K 17.3-inch screen



HS-4000 Top View





4K 17.3-inch Screen

Screen Adjustment Settings

LOGO

Downstream Keys

Keys

Menu Selection

Transition Effects

T Bar

HS-4000 Rear View

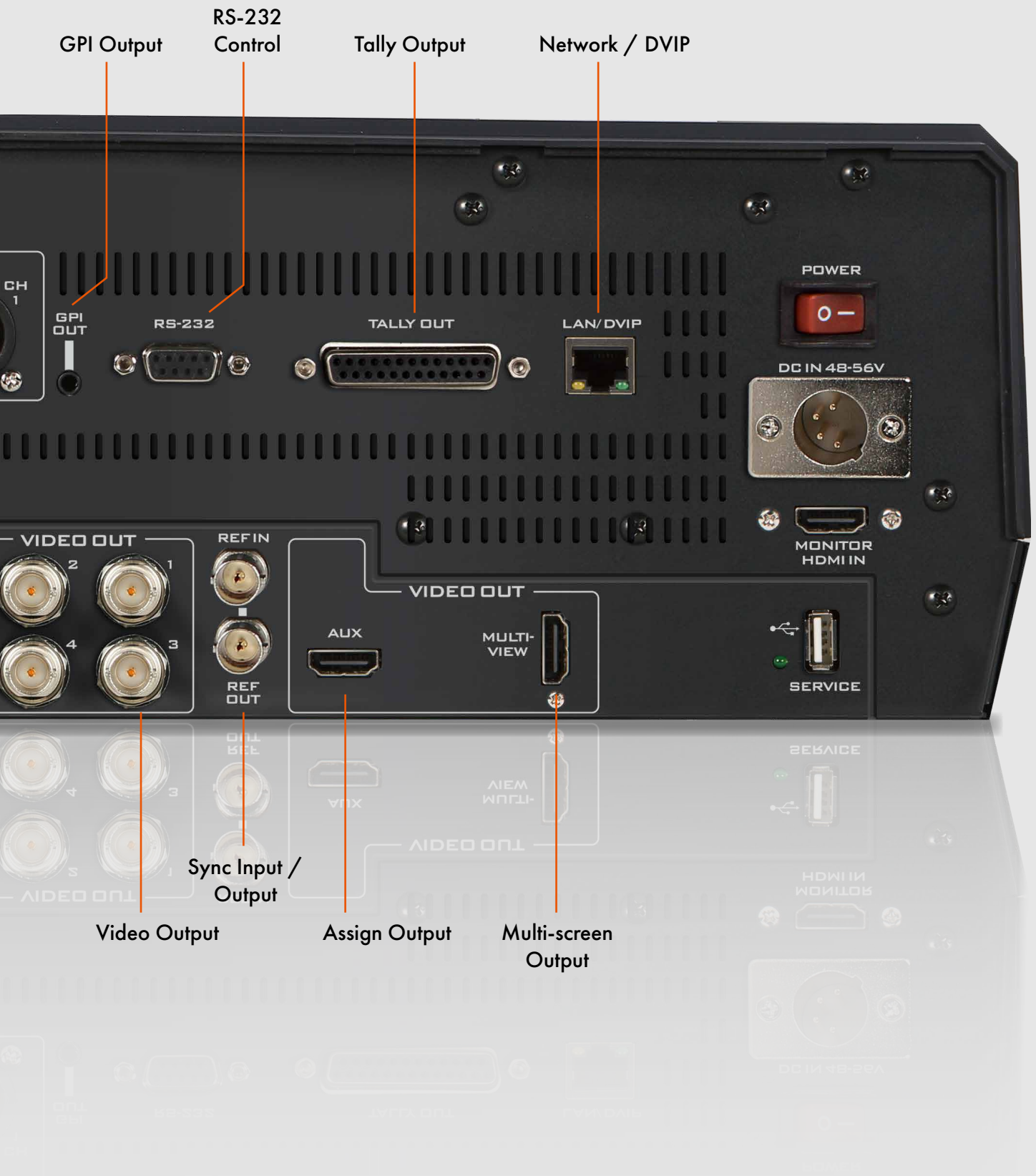
Audio Input

Audio Output



Video Output

Video Input



4K 8-Channel Mobile Video Studio MS-4000

12G

4K
50/60 UHD



The MS-4000 is a 4K 8-Channel mobile production studio designed for the multimedia era, presented in a compact and portable flight case form. It offers a comprehensive video production solution, including video switching, communication, recording, waveform vector monitoring, screen integration, and more. Its key features are as follows:

1. 8-Channel 4K live switching, supporting broadcast-grade UHD 4K50/60P in 8-channel mode, and UHD 4K29/30P in 12-Channel mode, with 12G-SDI and HDMI 2.0 input interfaces. It combines physical full-function buttons with a stylish and convenient 5-inch full-color LCD touchscreen for features like quad split composition, XPT (Cross Point), AUX output, special effects transitions, PiP (Picture-in-Picture) caption overlays, logo insertion, and audio mixing settings.
2. New digital intercom function - Reliable wired digital intercom system providing 8 channels of communication with no noise interference or disconnection concerns.
3. 4K UHD 17.3-inch LCD monitoring - Equipped with a high-quality 3840 x 2160 resolution LCD screen, supporting 12G-SDI and HDMI 2.0 loop inputs and outputs, suitable for broadcast and live production applications.
4. ProRes 4K recording function - Supports recording at 2160p 60 resolution, capable of simultaneous recording of multiple 1080p video streams.
5. Professional audio delay function with mixing, equalizer, and audio effects processing - MS-4000 has rich input/output interfaces with audio effects processing capabilities, meeting professional audio and video production needs.
6. Dual power supply center - Provides dual power supply for stable operation of the entire system.
7. H.265/H.264 encoding capability, offering extended application for encoding, recording, and streaming live events in mixed production.

The combination of these features makes the MS-4000 a fully functional and high-quality mobile production studio suitable for various live video production and live streaming events.





4K 8-Channel OB Van Studio OBV-4000

12G

4K
50/60 UHD

The OBV-4000 is a 4K 8-Channel compact outdoor broadcast van that can be installed in the rear space of a vehicle. It serves as a professional mobile solution for both studio and on-location shoots, catering to the trend of the multimedia mixed production era.

The OBV-4000 features rugged aluminum housing and can be custom-fitted inside an OB Van. Its core technology is a 4K switcher that supports both 8-channel UHD 4K50/60P and 12-Channel UHD 4K29/30P configurations via SDI and HDMI interfaces, offering flexible switching modes to accommodate different production needs. Moreover, the OBV-4000 is an integrated system equipped with a reinforced metal casing to protect internal components and provide space for future system expansion. This outdoor broadcast van offers full functionality, including video switching, communication, recording, waveform vector monitoring, and power integration.

ITC-300 digital intercom system – A reliable wired digital intercom offering 8-channel communication without noise interference or disconnection issues.

TLM-170K 4K UHD 17.3-inch LCD monitor – A desktop 17.3" 4K UHD monitor with 3840x2160 resolution, supporting 12G-SDI and HDMI 2.0 loop I/O, ideal for broadcast and live production monitoring.

HDR-90 ProRes 4K recorder – A rack-mounted recorder capable of 2160p 60 resolution recording and simultaneous multi-channel 1080p recording.

AD-200 audio delay unit – Offers mixing, equalization, compression, and rich audio I/O for professional sound processing.

HBT-30 3-channel HDBaseT AV decoder – Controls and powers three cameras over 100m distance while receiving 4K 50/60 video and outputting HDMI, RS-422, and IP signals.

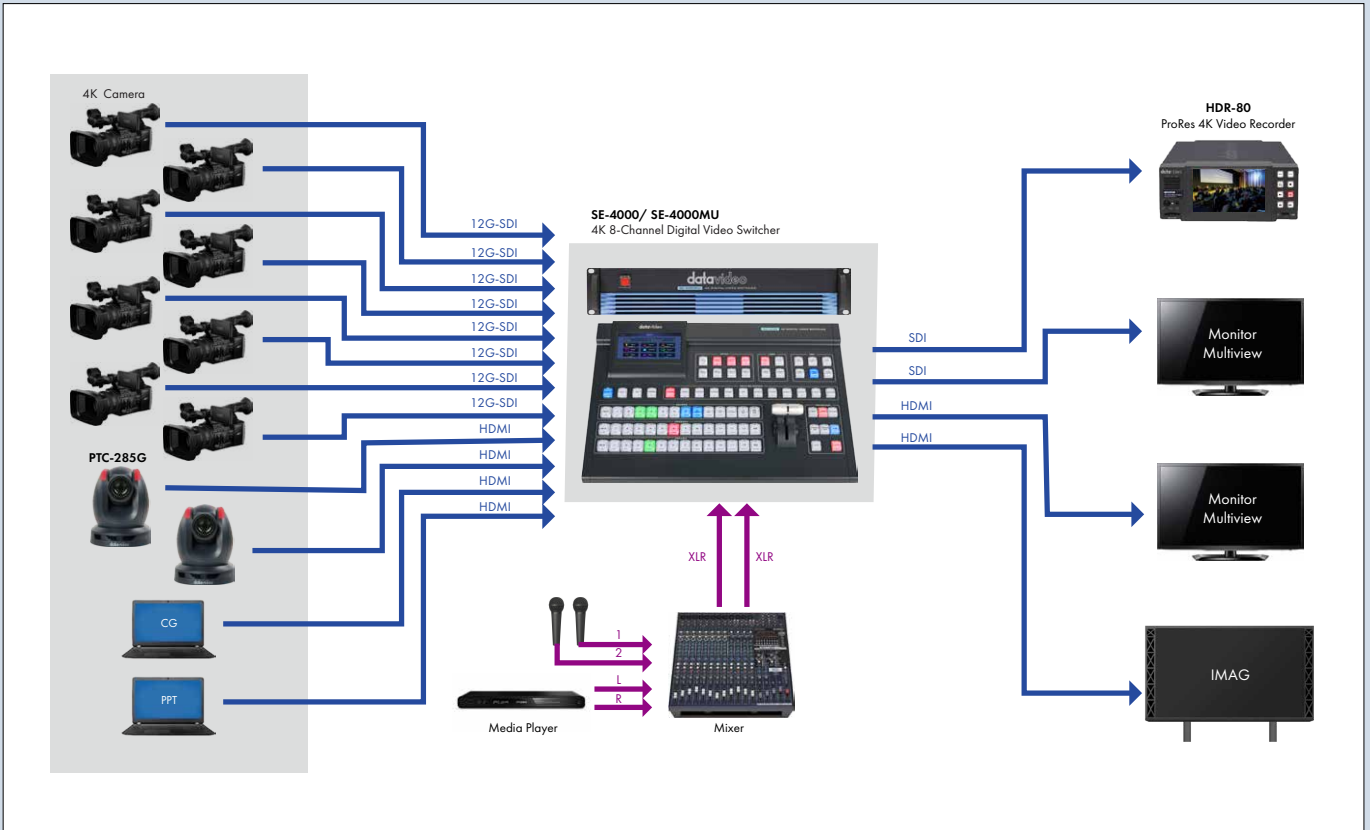
PD-4A dual power supply center – Provides redundant power for stable and uninterrupted operation.

The Main Equipment of the OB Van

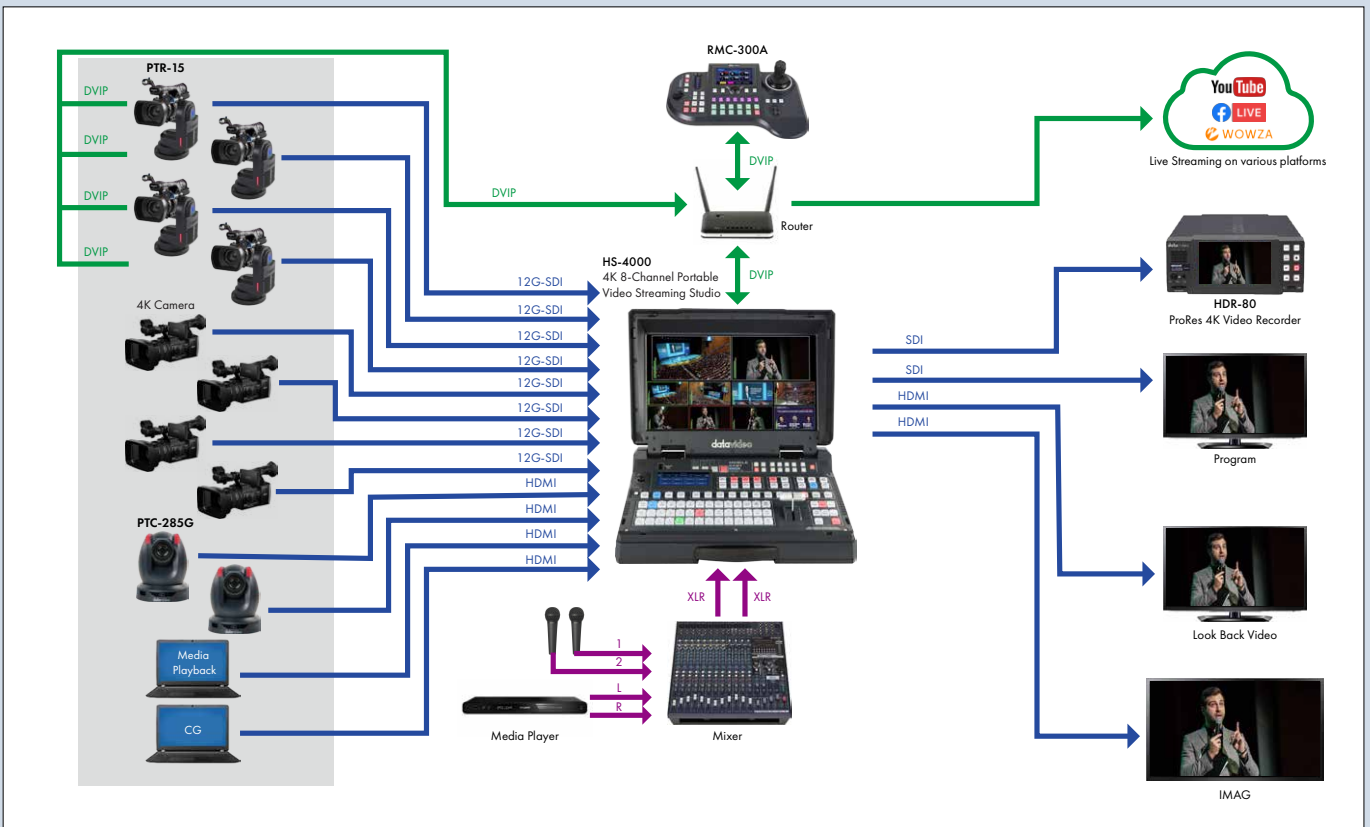
1	SE-4000	4K 8-Channel Switcher
2	TLM-170K	17.3-inch 4K UHD LCD monitor
3	HDR-90	ProRes 4K Video Recorder - Rackmountable
4	ITC-300	Digital Intercom System
5	NVS-36	Dual Platform Streaming Encoder
6	AD-200	6-Channel Audio Delay/Mixer with Level Adjustment
7	HBT-30	3-Channel 4K HDBaseT Receiver
8	PD-2A	Power Center
9	PD-4A	Redundant Power Center

System Diagram

SE-4000/SE-4000MU System Diagram

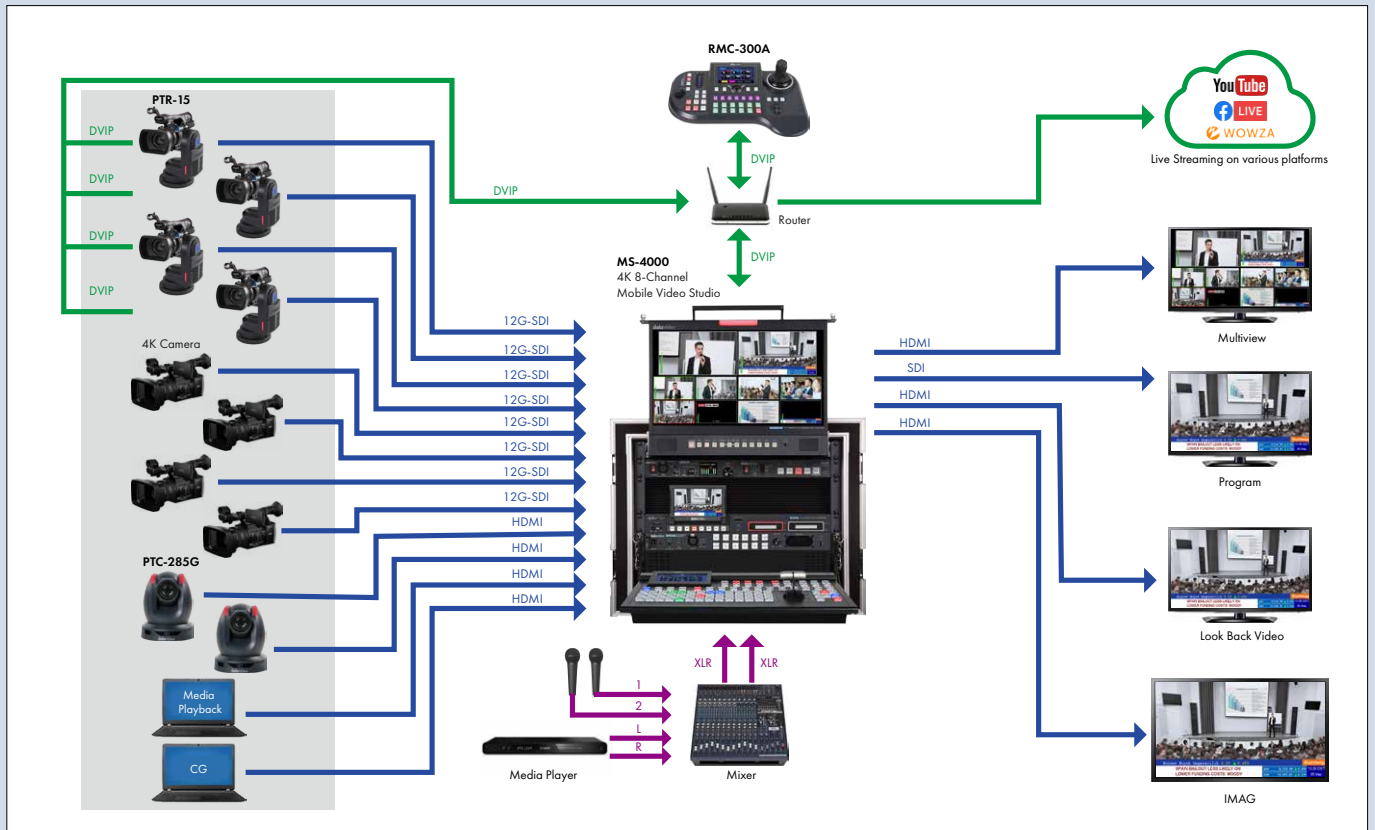


HS-4000 System Diagram

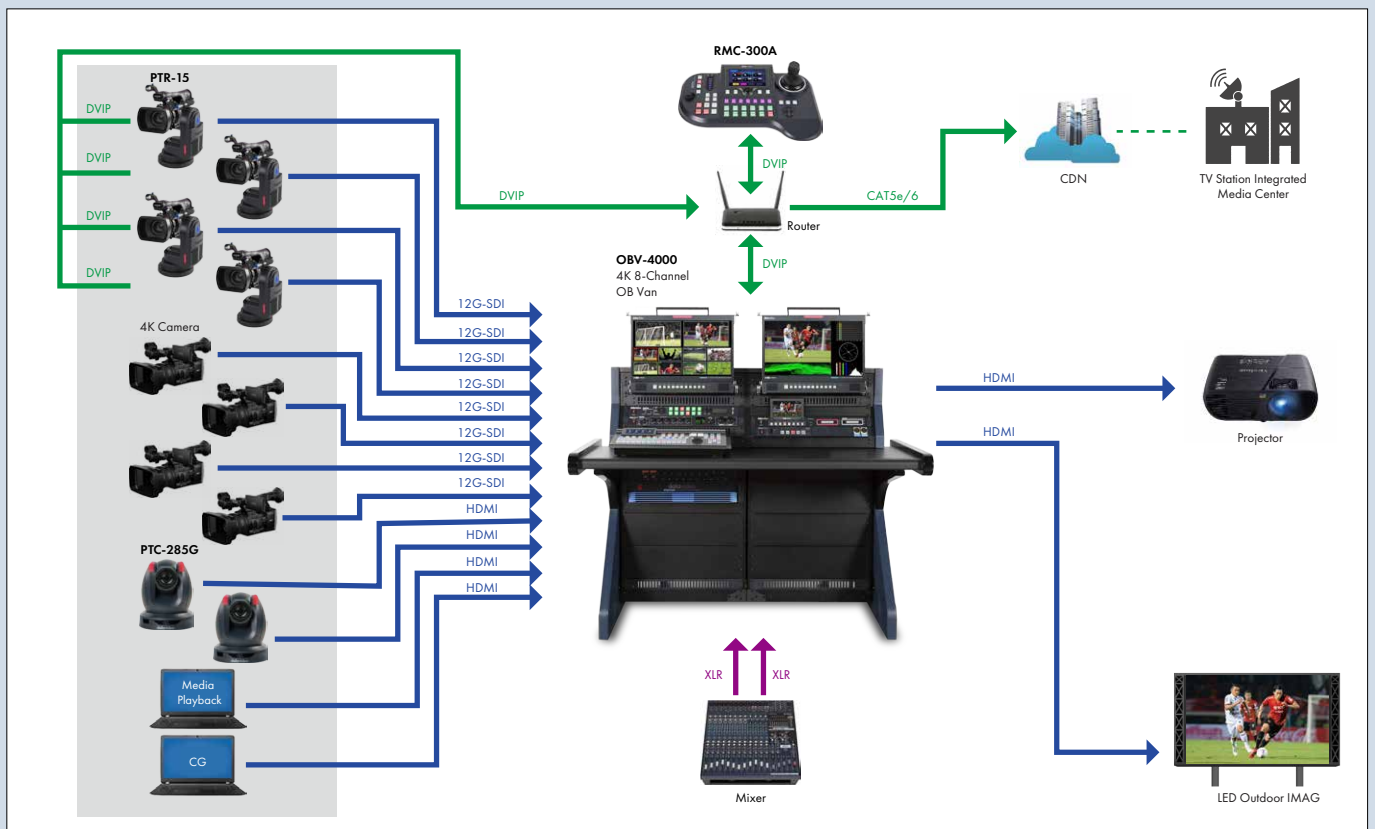


System Diagram

MS-4000 System Diagram



OBV-4000 System Diagram



Optional Accessories



PTR-10 MARK II

Robotic Pan Tilt Head

- Turn camcorder into PTZ
- Multiple signal interface: SDI, HDMI, RS-232, RS-422, DVIP/HDBaseT, Tally, LANC
- Diversified controller options: RMC-180, RMC-300, and HS-1600T series
- Control of Pan, Tilt, Zoom
- Support optional Datavideo ZEK-1 Zoom Encoder Kit, and ZEK-2 to detect and read out the Zoom position of cameras on top
- Max. Camera Weight 4kg



PTR-15

4K Robotic Pan Tilt Head

- Various interfaces: SDI, HDMI, RS-232, RS-422, DVIP/HDBaseT, Tally, LANC
- 12G-SDI and HDMI2.0 supported
- Timecode/Genlock interface built-in
- Multiple choices of controllers: RMC-180 MARK II, RMC-300A
- Tally light built-in
- D-tap connector for DC output
- Selectable DC voltage output for different cameras
- Support optional Datavideo ZEK-1 Zoom Encoder Kit, and ZEK-2 to detect and read out the Zoom position of cameras on top
- Control Sony, Panasonic, Canon, JVC cameras



BC-15PN

4K POV Camera

- 1/2.3" CMOS sensor with 4K 50/60p output, perfect for low light environment video production
- H.264/265 streaming encoder built-in
- Streaming videos in RTMP(S) and SRT
- support Datavideo dvCloud
- App control and live Preview
- Power over Ethernet supported
- Small box design makes it flexible to be mounted anywhere.
- Swappable Fixed Lens Built-in
- Support two types of controls: physical buttons, and APP
- NDI technology



BC-15CN

4K CS Mount POV Camera

- 1/2.3" CMOS sensor with 4K 50/60p output, perfect for low light environment video production
- H.264/265 streaming encoder built-in
- Streaming videos in RTMP(S) and SRT
- Support Datavideo dvCloud
- App control and live Preview
- Power over Ethernet supported
- Standard CS mount interchangeable lens design
- Supports DC-IRIS function
- Small box design makes it flexible to be mounted anywhere.
- Support two types of controls: physical buttons, and APP
- NDI technology



PTC-285G

4K 12X Tracking PTZ Camera

- Supports up to 2160p50/60 via HDMI
- 12x Optical Zoom, 16x Digital Zoom
- 1/2.5" CMOS
- Built-in H.264/H.265 dual streaming encoder
- 2160p and 1080p(3G-SDI) simultaneous video output
- External audio input: 3.5mm mic in or line in
- Compatible with various controllers: Datavideo PTZ View Assist APP, RMC-300 and RMC-180 series.



PTC-305G

4K 20X Tracking PTZ Camera

- Supports up to 2160p50/60 via HDMI
- 20x Optical Zoom, 16x Digital zoom
- 1/1.8 CMOS
- Built-in H.264/H.265 dual streaming encoder
- Auto tracking object supported
- External audio input: 3.5mm mic in or line in
- Compatible with various controllers: Datavideo PTZ View Assist APP, RMC-300 and RMC-180 series.



PTC-325G

4K 30X Tracking PTZ Camera

- Supports up to 2160p50/60 via HDMI
- 30x Optical Zoom, 16x Digital zoom
- 1/2.8 CMOS
- Built-in H.264/H.265 dual streaming encoder
- Auto tracking object supported
- External audio input: 3.5mm mic in or line in
- Compatible with various controllers: Datavideo PTZ View Assist APP, RMC-300 and RMC-180 series.

Specifications

Model Name	SE-4000
Product Name	4K 8-Channel Digital Video Switcher
Video Standard	4K
Video Format	Input: 3840x2160p: 60/59.94/50/30/29.97/25 1080p: 60/59.94/50/30/29.97/25 1080i: 60/59.94/50 Output: 4K60 8-Channel 3840x2160p: 60/59.94/50/30/29.97/25 1080p: 60/59.94/50/30/29.97/25 1080i: 60/59.94/50 Output: 4K30 8-Channel 3840x2160p: 30/29.97/25 1080p: 60/59.94/50
Video Processing	SDI: 4:2:2 10-bit HDMI: YUV 4:2:2 10-bit, RGB: 4:4:4 8/10-bit
Input Routable / Crosspoint	YES
Video Input	Total 8 live inputs for 4k60 (select 8 from 12) or Total 12 input for 4K30 8 x 12G-SDI 4 x HDMI
Mix HD & SD Source	----
Computer Graphic Interface	4 via HDMI
Video Output	4 x 12G-SDI / 3 x HDMI all assignable : Multiview, PGM, PVW, PGM+DSK, Clean PGM, Clean PVW, Input 1-12
Down-converted Output	Yes
Built-in Multi-view Monitoring Out	HDMI & SDI assignable
Analogue Audio Input	4 x Analogue XLR
Analogue Audio Output	2 x Analogue XLR
Digital Embedded Audio Support	Input 4 channels, Output 4 channels
Audio Delay Calibration	Up to 16 fields or 8 frames per channel
A+V Switching	Yes
Chromakey	4
Title Creator	Yes (Coming soon by firmware update)
USK	4x Keyer support Chromakey/ Linear/ Luma Key
DSK	2x DSK support Lumakey & Linear key (Key / Fill)
Picture in Picture	2
Logo Insertion	2
Still Store	250
Effects	FTB, Cut, 32 Wipe with border
Transition Preview	Full transitions preview
Sync / Reference In/Out	1 x BNC Ref in 1 x BNC Ref out (loop-through) (available after firmware upgrade)
Tally Output	1 x D-Sub 25pin, dual color
PC Remote Control	DVIP (Ethernet)
Camera Control	----
Built-in Audio Mixer	Yes
Streaming Protocol	----
Firmware Update	USB / Ethernet
Special Features	5" Touchscreen Display
Chassis	2 units, 2RU rack-mount mainframe
Dimension (LxWxH)	433 x 314 x 79 mm (switcher) 432 x 250 x 88 mm (main unit)
Weight	7.1 kg
Power	DC 12V, 108W
Operating Temp. Range	0~40 °C
What's in the Box	1 x SE-4000 Main Unit 1 x SE-4000 Control Board 2 x AD Switch DC 12V 1 x AC Cord 1 x Ethernet Cable 12 x Screw 2 x 2U Ear Rack

Model Name	HS-4000
Product Name	8-Channel 4K Portable Video Studio
Video Standard	4K & HD
Video Format	Input: 3840x2160p: 60/59.94/50/30/29.97/25 1080p: 60/59.94/50/30/29.97/25 1080i: 60/59.94/50 Output: 4K60 8-Channel 3840x2160p: 60/59.94/50/30/29.97/25 1080p: 60/59.94/50/30/29.97/25 1080i: 60/59.94/50 Output: 4K30 8-Channel 3840x2160p: 30/29.97/25 1080p: 60/59.94/50
Input Routable / Crosspoint	Yes
Video Input	Total 8 live inputs for 4k60 (select 8 from 12) or Total 12 input for 4K30 8 x 12G-SDI 4 x HDMI
Computer Graphic Interface	4 via HDMI
Down-converted Output	Yes (Coming soon by firmware update)
Video Output	4 x 12G-SDI / 1 x HDMI all assignable : Multiview, PGM, PVW, PGM+DSK, Clean PGM, Clean PVW, Input 1-12 2 x HDMI PGM only 1 x HDMI Multiview
Analogue Audio Input	4x Balanced XLR
Analogue Audio Output	2x Balanced XLR
Digital Embedded Audio Support	Input 4 channels, Output 4 channels
Audio Delay Calibration	Up to 16 frames
A+V Switching	Yes
USK	4
DSK	2, support Lumakey & Linear key (Key / Fill)
Picture in Picture	2
Logo Insertion	2
Title Creator	Yes (Coming soon by firmware update)
Built-in Audio Mixer	----
Built-in Monitor Display	17.3" 4K TFT LED backlight, 3840x2160 pix
Built-in Intercom & Tally	----
Streaming	H.264: MAX RES: 4K@30 420 8bit codec H.265: MAX RES: 4K@60 420 8bit codec
Streaming Audio Encode	AAC 2CH, 16bit 48KHz 192Kbps
Streaming Protocol	RTMP SRT
Streaming Control	Web browser UI for configuration and control Socket commands
Recording File System	FAT32, exFAT
Recording File Format	MP4 (H.265+ AAC) or (H.264+ AAC)
Streaming & Recording Setting Control	Web UI for system configuration and control
Special Features	5" Touch Panel 17.3" 4K Monitor 4 Chroma-Key Virtual Studio Streaming encoder and recorder
Dimension (LxWxH)	455 x 370 x 134 mm
Weight	9.2 kg, Reinforce Plastic Case
Power	DC 56V, 4.46A
Operating Temp. Range	0~40 °C
What's in the Box	1 x HS-4000 Unit 1 x AD Switch DC 48~56V with AC Cord

datavideo
www.datavideo.com



 **datavideo**
DATAVIDEO ACADEMY
www.datavideoacademy.com



@DatavideoUSA
@DatavideoEMEA
@DatavideoTaiwan

@DatavideoAsia
@DatavideoIndia2016
@Datavideojapan



@Datavideo
@Datavideo_EMEA
@Datavideo_Taiwan



@DatavideoUSA
@DVTWDVCN



@DatavideoUSA
@DatavideoEurope

Disclaimers of Product and Services

This brochure is intended as a guide only. We reserve the right to change specifications and availability without prior notice. While we strive for complete accuracy, be aware that it may contain errors and omissions. Prior to purchase, please check with your local Datavideo office or authorised distributor.

Ver.20250402