

3d3qIR setup for HDMI over CAT5 this document will work with either of the 2 products listed below.

HDTV-E50A - <http://www.hdtvsupply.com/hdmi-over-1-cat5-cable.html>

HDTVHDVE100 - <http://www.hdtvsupply.com/hdmi-over-cat5.html>

Here are the steps to get the HDMI over CAT5/6/7 cable connected and IR to function.

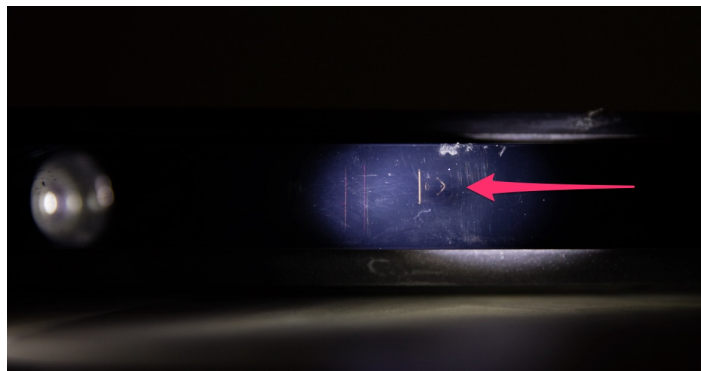
1. Before installing the CAT5/6/7 cable in to a wall, connect the CAT cable between the Transmitter and Receiver on the floor.
2. Connect one HDMI cable from the source to the transmitter
3. Connect one HDMI cable from your receiver to your TV
4. Plug in the power supplies to both the transmitter and receiver
5. Now that you have a picture you can install the CAT5/6/7 cable in the wall ceiling or wherever you are wanting to run it

Installing and setting up your IR

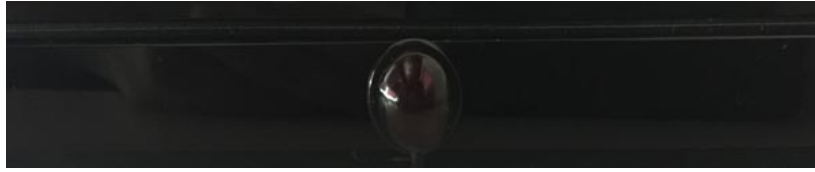
1. On the transmitter side connect the IR cable that looks like the picture below to the IR OUT



2. Now find the IR emitter on your source device we like to take a flashlight and point it at the front panel of the source like below.



3. Using the included sticky tape attach the IR to the source device



4. On the receiver side connect the IR cable that looks like the picture below to the IR IN



5. Now connect the IR to your TV an example has been included



6. Now that you have all the cables connected and mounted you can control your source device from your TV through the IR

HDTV Supply, Inc.
3835-R East Thousand Oaks Blvd Unit 295
Westlake Village, CA 91362
(800) 841-9238
support@hdtvsupply.com

