

KanexPro®

HDEXT50M

HDMI Extender over CAT5/6 up to 165ft. (50m)

Setup Guide

Table of Contents

- 1) Introduction 2
- 2) Specifications. 3
- 3) Package Contents 3
- 4) Unit Layout & Description 4
- 5) Connection and Operation 5
- 6) Connection Diagram. 5
- 7) Warranty. 5

Notice

KanexPro reserves the right to make changes in the hardware, packaging and any accompanying documentation without prior written notice.

I

Introduction

HDMI Extender over CAT5/6 up to 165ft. (50m)

The KanexPro HDEXT50M is an HDMI Extender designed to carry DVI/ HDMI signals over distances beyond the capability of standard HDMI/ DVI cable. It extends video and audio over a single CAT5e/6 cable up to 165ft. (50m) and is compliant with HDCP and EDID to enhance Deep Color and optimal resolutions.

In addition, the extender provides auto-adjustment, buffering and signal equalization to maintain pixel-perfect resolution up to HD 1080p/60 depending on the RJ-45 run. To attain full HD 1080p the distance has to be shorter than 100ft. STD/ TV Switch located on the Tx is designed to select Color depths and audio channel functions. By switching to TV, the unit reads the TV's EDID to display properly. Ideally used for home theater, small office, house of worship centers and classrooms, where there is a need to remotely extend HDMI sources such as a Blu-ray player, HDMI laptop, or cable box to an HD 1080p display.

Features:

- Extend DVI/HDMI over Cat5e/6 cables up to 165 ft. (50m)
- Supports full HD 1080p (1920x1080@60Hz)
- STD/TV switch designed for EDID & Deep color optimization
- Digital audio support through HDMI
- HDCP 1.4 compliant
- Wideband IR control
- Includes IR emitter / receiver
- Includes Power supplies
- Includes mounting kits
- No Set-up/ configuration required

2

Specifications

Interface: Transmitter
 Input: HDMI x1
 Output: Cat 5e/6 x1

Receiver
 Input: Cat 5e/6 x1
 Output: HDMI x1

Operating Frequency: Vertical Frequency Range 50/60Hz

Resolutions (HDTV): 480i/576i/480p/576p/720p/1080i/1080p

Transmission Distance: 50m for 1080p

Power Supply:

Environmental: Operating Temperature: 0°C to +70°C
 Operating Humidity: 10% to 85 % RH (no condensation)
 Storage Temperature: -10°C to +80°C

Regulatory Approvals Converter: FCC, CE, UL

Regulatory Approvals Power Supply: FCC, CE, UL

Dimensions: 81x4 x 25mm

Weight: 325g

Warranty: 1 Year Parts and Labor

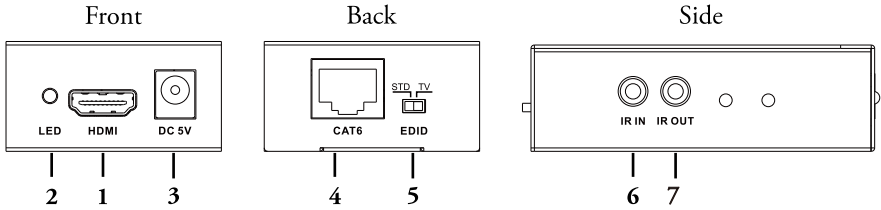
3

Package Contents

- 1) Transmitter x1
- 2) Receiver x1
- 3) 5V DC Power Supply x2
- 4) Wideband IR TX cable x1
- 5) Wideband IR RX cable x1
- 6) Manual x1

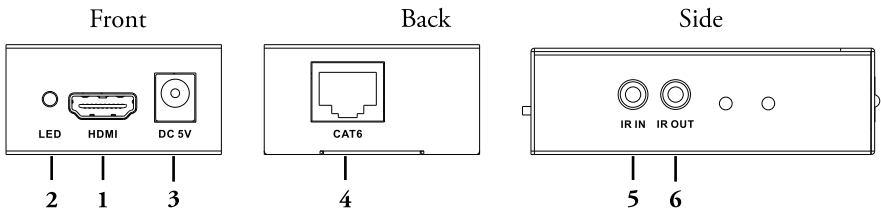
Unit Layout & Description

Transmitter



- 1) HDMI Input
 - a. Connect the HDMI source device (DVD player, set top box, gaming console) to this port
- 2) Power LED
 - a. LED will be active when unit is powered on
- 3) DC/5V Connector
 - a. Connect the 5V Switch Splitter power supply to this port
- 4) Cat5e/6 Output
 - a. Connect to the Cat5e/6(UTP) input on the Receiver unit
- 5) EDID switch
 - a. STD mode: 1080p@60Hz,2CH audio
 - b. TV mode: Copy TV EDID information to HDMI source.
- 6) IR IN
 - a. Connect to the IR Receiver for IR signal reception. Ensure that remote being used is within the direct line-of-sight of the IR receiver
- 7) IR OUT
 - a. Connect the IR Blaster cable included in the package for IR signal transmission. Place the IR blaster in direct line-of-sight of the equipment to be controlled

Receiver

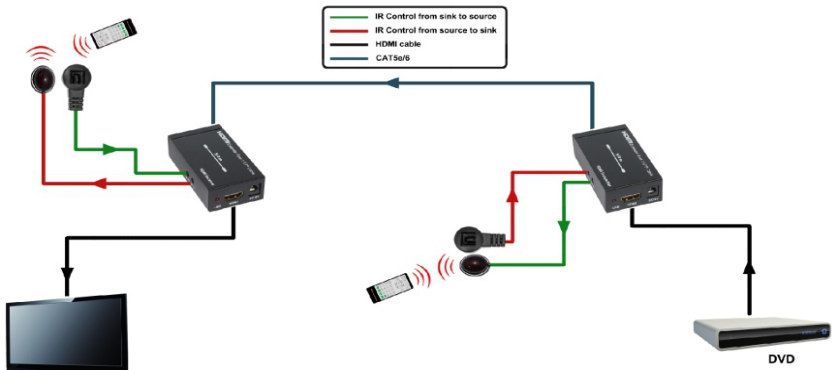


- 1) HDMI Output
 - a. Using the HDMI cable connect the HDMI display to this port
- 2) Power LED
 - a. LED will be active when unit is powered on
- 3) DC/5V Connector
 - a. Connect the 5V Switch Splitter power supply to this port
- 4) Cat5e/6 Input
 - a. Connect to the Cat5e/6(UTP) Output on the Transmitter unit
- 5) IR IN
 - a. Connect to the IR Receiver for IR signal reception. Ensure that remote being used is within the direct line-of-sight of the IR receiver
- 6) IR OUT
 - a. Connect the IR Blaster cable included in the package for IR signal transmission. Place the IR blaster in direct line-of-sight of the equipment to be controlled

5

Connection and Operation

- 1) Connect HDMI source devices(Gaming consoles, DVD Players, etc) to the HDMI input ports on the Transmitter
- 2) Connect a Cat5e/6 cable to the Cat5e/6 port on both the Transmitter and Receiver unit
- 3) Connect HDMI display(HDTV, projector, monitor, etc) to the HDMI output on Receiver unit
- 4) Connect the 5V power supply to the both units and power on devices



7

Warranty

A. Limited Warranty

KanexPro warrants that (a) its products (the "Product") will perform greatly in agreement with the accompanying written materials for a period of 12 months (1 full year) from the date of receipt and (b) that the product will be free from defects in materials and workmanship under normal use and service for a period of 1 year.

B. CUSTOMER REMEDIES

KanexPro's entire liability and Customer's exclusive remedy shall be, at KanexPro option, either return of the price paid for the product, or repair or replacement of the Product that does not meet this Limited Warranty and which is returned to KanexPro with a copy of customer's receipt. This Limited Warranty is void if failure of the Product has resulted from accident, abuse, or misapplication. Any replacement Product will be warranted for the remainder of the original warranty period or 1 year, whichever is longer.

C. NO OTHER WARRANTIES

TO THE MAXIMUM EXTENT PERMITTED BY APPLICABLE LAW, KANEXPRO DISCLAIM ALL OTHER WARRANTIES, EITHER EXPRESS OR IMPLIED, INCLUDING, BUT NOT LIMITED TO IMPLIED WARRANTIES OF MERCHANTABILITY AND FITNESS FOR A PARTICULAR PURPOSE, WITH REGARD TO THE PRODUCT AND ANY RELATED WRITTEN MATERIALS. THIS LIMITED WARRANTY GIVES CUSTOMER SPECIFIC LEGAL RIGHTS. CUSTOMER MAY HAVE OTHER RIGHTS DEPENDING ON THE JURISDICTION.

D. NO LIABILITY FOR DAMAGES

TO THE MAXIMUM EXTENT PERMITTED BY APPLICABLE LAW, IN NO EVENT SHALL KANEXPRO BE LIABLE FOR ANY DAMAGES WHATSOEVER (INCLUDING WITHOUT LIMITATION, SPECIAL, INCIDENTAL, CONSEQUENTIAL, OR INDIRECT DAMAGES FOR PERSONAL INJURY, LOSS OF BUSINESS PROFITS, BUSINESS INTERRUPTION, LOSS OF BUSINESS INFORMATION, OR ANY OTHER PECUNIARY LOSS) ARISING OUT OF THE USE OF OR INABILITY TO USE THIS PRODUCT, EVEN IF KANEXPRO HAS BEEN ADVISED OF THE POSSIBILITY OF SUCH DAMAGES.

KanexPro®

Brea, California

KanexPro.com

MPN:HDEXT50M

HDMI are trademarks or registered trademarks of HDMI Licensing LLC in the United States and other countries. Kanex is a trademark of Apogee Inc., registered in the U.S. HDBase™ is a trademark of HDBase™ alliance. Blu-Ray is a trademark of Blu-ray Disc Association. Playstation is the registered trademark of Sony Computer Entertainment Inc.

KanexPro[®]

Brea, California

KanexPro.com