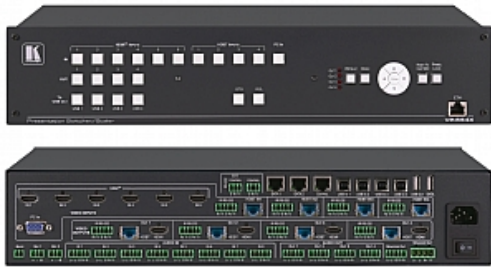




# kramer

## VP-554X

11x4:2 Presentation Boardroom Router /  
Scaler System



The VP-554X is a high-performance presentation scaler/switcher with 4 pairs of independent and scaled outputs. It includes multiple HDMI and HDBaseT inputs – supporting resolutions up to 4K – as well as a legacy VGA input, and each of the 4 outputs is mirrored on both HDMI and HDBT.

VP-554X supports embedded and balanced analog stereo audio, up to 2 microphone inputs, DSP audio features and a built-in stereo power amplifier. It includes a built-in Ethernet switch and supports legacy RS-232, and IR, Ethernet and RS-232 tunneling over HDBT

## FEATURES

**Pix-Perfect™ Scaling Technology** - Kramer's precision pixel mapping and high-quality full up – and down-scaling technology

**High-Performance Switcher/Scaler** - Scales the video and provides constant output sync to prevent signal disruption when switching between inputs and when no video is detected

**HDCP 2.3 Compliance** - The HDCP (High Definition Content Protection) license agreement allows copy-protected data on the HDMI input to pass to HDCP compliant outputs

**Resolutions** - Up to 4K60 4:4:4 on the HDMI ports; up to 4K60 4:2:0 on the HDBaseT ports; and up to 1080p60 on the VGA input

**System Range for the HDBT inputs and outputs** - Up to 100m for 4K; 180m for 1080p

**4x1 USB Switcher** - Can be set to follow the switching of the video layer or as an independent switcher

- Audio DSP Features, including input and output level adjustments, microphone talkover, mixing, and EQ

- Analog & Embedded Audio Support

**Built-in Power Amplifier** - 2x20W

**Built-in Video ProcAmp** - Color, hue, sharpness, noise, contrast, and brightness

- Option for video wall output mode

**Multiple Control Options** - Front panel buttons with OSD, RS-232, Ethernet and built-in Web pages

- Includes numerous filters and algorithms for eliminating picture artifacts

- Converts to 4K60 4:2:0 on HDBaseT outputs when its corresponding mirrored HDMI output resolution is 4K60 4:4:4 (similarly for 4K50)

**HDMI Support** - HDR10, CEC, xvYCC color (on input), Dolby TrueHD/DTS-HD Master Audio (by-pass), as specified in HDMI 2.0 as specified in HDMI 2.0

- Multiple aspect ratio selections

- Advanced EDID management per input

- Includes non-volatile memory that retains the last settings, after switching the power off and then on again

- STO and RCL buttons, a RESET TO XGA/1080P button (to hardware-reset the output resolution); and a PANEL LOCK button

- Built-in video Proc-Amp – color, hue, sharpness, contrast, and brightness are set individually for each output

- An OSD (On-Screen Display) – for making adjustments – that can be located anywhere on the screen

- Efficient power-saving features

- Advanced EDID management per input

- Includes non-volatile memory that retains the last settings, after switching the power off and then on again

- 11 input buttons for switching a selected input to an output

- Scaled video outputs – 4 pairs of mirrored HDMI and HDBT outputs

- Embedded audio on the HDMI and HDBT inputs and outputs
- 11 input buttons for switching a selected input to an output
- Embedded audio on the HDMI and HDBT inputs and outputs
- Scaled video outputs – 4 pairs of mirrored HDMI and HDBT outputs



# kramer

## TECHNICAL SPECIFICATIONS

---

Inputs	6 HDMI On female HDMI connectors 1 PC On a 15-pin HD connector 4 HDBT On RJ-45 female connectors 8 Stereo Analog Balanced Audio On 5-pin terminal block connectors 2 Unbalanced Mono Audio On 3-pin terminal block connectors
Outputs	4 HDMI On female HDMI connectors 4 HDBT (mirrored with each HDMI output) On RJ-45 female connectors 5 Balanced Stereo Audio On 5-pin terminal block connectors 1 Stereo Balanced Audio On a 4-pin large terminal block
Line Level Input	Impedance 16.6k $\Omega$ Maximum level +14.7dBu (4.2Vrms) Sensitivity Full power @ +8.7dBu (2.1Vrms) for OUT =1.9Vrms
MICROPHONE LEVEL INPUT	Impedance 47k $\Omega$ Sensitivity Full power @ -37dBu (11mVrms) for OUT =1.9Vrms Phantom Power 48Vdc on/off per input
Line Level Output	Impedance 500 $\Omega$ Frequency Response 20Hz - 20kHz @ +/-1dB S/N Ratio >75dB, 20Hz - 20kHz (unweighted), >81dB, 20Hz - 20kHz (A-weighted) Audio THD + Noise <0.014%, 20Hz - 20kHz (unweighted), <0.0092%, 20Hz-20kHz (A-weighted) Crosstalk <-93 dB, 20Hz to 20kHz
Amplifier	Output Power 2 x 20W into 4 $\Omega$ Amplifier Class D Maximum Voltage Gain 26dB BTL Dynamic Range 103 dB A-Weighted Frequency Response 20Hz - 20kHz @ +/-1dB S/N Ratio >68 dB, 20Hz - 20kHz (unweighted) Audio THD + Noise <0.037%, 20Hz - 20kHz (unweighted) Crosstalk <-77 dB, 20Hz to 20kHz
Ports	4 IR (for HDBT Outputs) On terminal block connectors for IR link extension 4 IR (for HDBT Inputs) On terminal block connectors for IR link extension 4 RS-232 (for HDBT Outputs) On terminal block connectors for serial link extension

4 RS-232 (for HDBT Inputs) On terminal block connectors for serial link extension

5 USB 4 USB Hosts on USB-B connectors

1 USB Client on a USB-A connector

1 USB On a USB-A connector for firmware upgrading

2 RS-232 On 3-pin terminal block connectors

4 100BaseT Ethernet On RJ-45 female connectors for device control and LAN extension

Video  
Max Resolution HDMI: 4K60 4:4:4  
HDBT: 4K60 4:2:0  
PC (VGA):1080p

Compliance Up to HDMI 2.0 and HDCP 2.2

Extended Ethernet Max Transmission Bandwidth 100Mbps

Extended RS-232 Baud Rate 300 to 115200

Control RS-232 Baud Rate 115200

Power Max, Power Consumption 190VA

Storage Temperature -40° to +70°C (-40° to 158°F)

Environmental Conditions Operating Temperature 0° to +40°C (32° to 104°F)

Humidity 10% to 90%, RHL non-condensing

Regulatory Compliance (Standards Compliance) Safety CE, FCC

Environmental RoHs, WEEE

Enclosure Size 19" 2U

Type Aluminum

Cooling Fan ventilation

Accessories Included Power adapter cord

Product Dimensions 43.69cm x 23.60cm x 8.80cm (17.20" x 9.29" x 3.46" ) W, D, H

Product Weight 5.0kg (11.0lbs) approx

Shipping Dimensions 52.60cm x 47.50cm x 18.40cm (20.71" x 18.70" x 7.24" ) W, D, H

Shipping Weight 6.3kg (13.9lbs) approx

