

4K 10.2Gbps HDMI USB KVM Extender Over IP via CATx Cable with POE & Video Wall Support

XTENDEX®

Extend 4Kx2K 30Hz HDMI monitor, USB keyboard, USB mouse, and IR up to 394 feet using Gigabit Ethernet. Create video walls up to 8x16 – 128 screens.

- Supports Ultra-HD 4Kx2K resolutions to 3840x2160 @30Hz, HDTV resolutions to 1080p, and up to 1920x1200 (WUXGA).
- Cascade network switches to extend the length long distances.
- HDMI features supported:
 - HDMI 1.4
 - RGB, YCbCr 4:4:4, YCbCr 4:2:2, and YCbCr 4:2:0
 - LPCM 5.1/7.1, Dolby Digital, and DTS
 - Bandwidth up to 340 MHz (10.2 Gbps)
- HDCP 1.4 compliant.
- Two USB 2.0 ports for keyboard, mouse, flash drive, or touchscreen display.
 - Keyboard and mouse are hot-pluggable.
- Power over Ethernet (PoE) – power supply not required at the local or remote unit when used with a switch that supports PoE.
- Supports video wall installations from 1x2 to 8x16 screens.
 - Displays can be rotated 90, 180 and 270°.
- Plug-and-Play installation allows receivers to find the transmitter automatically on the same network. (Network configuration may be required if using a managed network switch.)
- Bi-directional IR control from input and output locations.
- Manage transmitter/receiver connections and video wall configuration with built-in software or DIP switches.
- Supports full-duplex RS232 up to 115200 baud.
- Customizable EDID table.
- Easily expandable – add receivers as you add control stations.
- Mounting brackets included for easy surface/wall mounting.



**XTENDEX® ST-IPC6FOUSB4K-POE
(Local & Remote Units)**

- **Supports Point-to-Point, Point-to-Many, & Many-to-Many Connections**
- **Supports Video Wall Installations from 1x2 to 8x16 Screens**
- **Power over Ethernet (POE) – No Power Supply Required**

The XTENDEX® 4K HDMI USB KVM Over IP Extender provides remote KVM (USB keyboard, USB mouse, and 4Kx2K HDMI monitor) access to a USB computer up to 394 feet (120 meters) over a Gigabit network using a single CAT5e/6/6a/7 cable. The extender consists of the ST-IPC6FOUSB4K-L-POE local unit that connects to a computer and the ST-IPC6FOUSB4K-R-POE remote unit that connects to an HDMI monitor, USB keyboard, and USB mouse.

The local and remote units can be connected together for a Point-to-Point connection via CATx cable, or a Point-to-Many or Many-to-Many connection via a Gigabit network switch.

4K 10.2Gbps HDMI USB KVM Extender Over IP via CATx Cable with POE & Video Wall Support

XTENDEX®

Extend 4Kx2K 30Hz HDMI monitor, USB keyboard, USB mouse, and IR up to 394 feet using Gigabit Ethernet. Create video walls up to 8x16 – 128 screens.

Specifications

Local Unit

- Compatible with a USB computer with Ultra-HD HDMI output.
- Multiplatform support: Windows 7/8/10/11, Windows Server 2008/2012/2016/2019/2022, Linux, FreeBSD, and MAC OS 10/11/12/13.
- One female HDMI connector.
- One female USB Type B connector.
- Two female 3.5mm ports for connecting an IR emitter and receiver (included).
 - IR frequency: 38kHz to 56kHz
- 3-pin screw terminal for RS232.
 - Supports full-duplex RS232 up to 115200 baud.
- One female RJ45 port for sending/receiving high definition video/audio, USB, RS232, and IR signals.
- One SFP receptacle – fiber extension not supported at this time.
- DIP switch for specifying unit ID.

Remote Unit

- One female HDMI connector.
 - Supports Ultra-HD 4Kx2K resolutions to 3840x2160 @30Hz, HDTV resolutions to 1080p, and up to 1920x1200 (WUXGA).
 - Supports embedded digital audio through HDMI compatible TVs or audio receivers.
- Two female USB 2.0 Type A connectors for keyboard, mouse, flash drive, or touchscreen display.
 - Keyboard and mouse are hot-pluggable.
- Two female 3.5mm ports for connecting an IR emitter and receiver (included).
 - IR frequency: 38kHz to 56kHz
- 3-pin screw terminal for RS232.
 - Supports full-duplex RS232 up to 115200 baud.
- One female RJ45 port for sending/receiving high definition video/audio, USB, RS232, and IR signals.
- One SFP receptacle – fiber extension not supported at this time.
- DIP switch for specifying unit ID.

Power

- Power over Ethernet: With a switch that supports PoE, a power supply is not required at the local or remote unit.
 - Compliant with IEEE 802.3af, class 0 standards.
- Local and remote unit:
 - Input: 100 to 240 VAC at 50 or 60 Hz via AC adapter (included).
 - Output: 5VDC, 2A

Dimensions

- Local and remote unit WxDxH (in): 6.30x4.06x1.18 (160x103x30 mm).

Environmental

- Operating temperature: 23 to 95°F (-5 to 35°C).
- Storage temperature: 14 to 140°F (-10 to 60°C).
- Operating relative humidity: 5 to 90% non-condensing RH.

Regulatory Approvals

- CE, FCC, RoHS

Warranty

- Two years

Max Distance

- 394 feet over CAT5e/6/6a/7 cable.
- Cascade network switches to extend the length long distances.

Cables

- Interface cables between the computer/display and the transmitter/receiver are required for proper operation.
 - Supports cable lengths to 20 feet for 4K resolutions and lengths to 50 feet for 1080p@60Hz using passive HDMI cables.
- Use HD-xx-MM cable to connect an HDMI source or display (not included).
- Use HD-ACT-xx-MM 4K HDMI Active Cables to connect an HDMI source or display up to 100 feet (not included).
- Use DP-HD-xx-MM cables to connect a DisplayPort computer or display up to 15 feet (not included).
- Use USB3C-HD4K-xx-MM to connect a 4K@30Hz computer with USB Type C connector up to 10 feet (not included).
- Use DVI-HD-xM-MM to connect a DVI computer up to 5 meters (not included).
 - Supports resolutions to 1080p.
- Use CAT5e/6/6a/7 solid straight through cable for TIA/EIA-568B wiring terminated with standard RJ45 connectors (not included).
- One 5.92 ft (1.8 m) male USB Type A to male USB Type B cable included with the transmitter.

4K 10.2Gbps HDMI USB KVM Extender Over IP via CATx Cable with POE & Video Wall Support

NTI Part #	Local or Remote Unit
ST-IPC6FOUSB4K-L-POE	Local
ST-IPC6FOUSB4K-R-POE	Remote

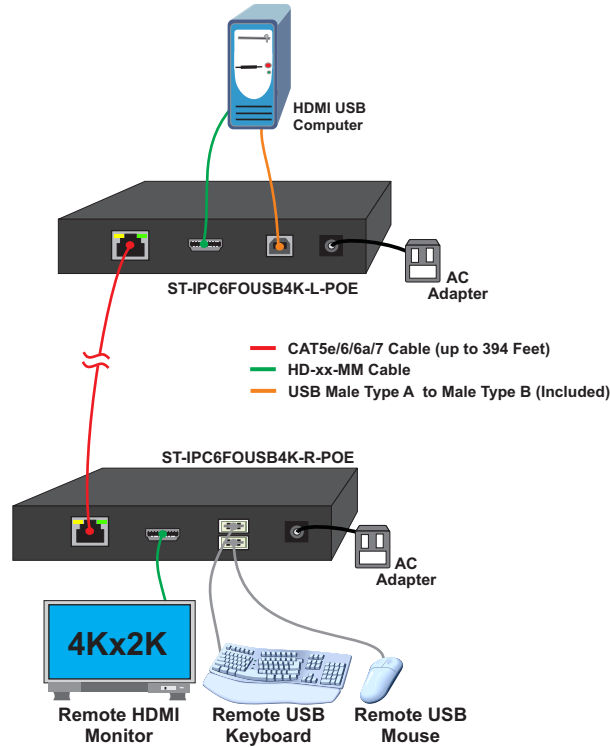
4K 10.2Gbps HDMI USB KVM Extender Over IP via CATx Cable with POE & Video Wall Support

XTENDEX®

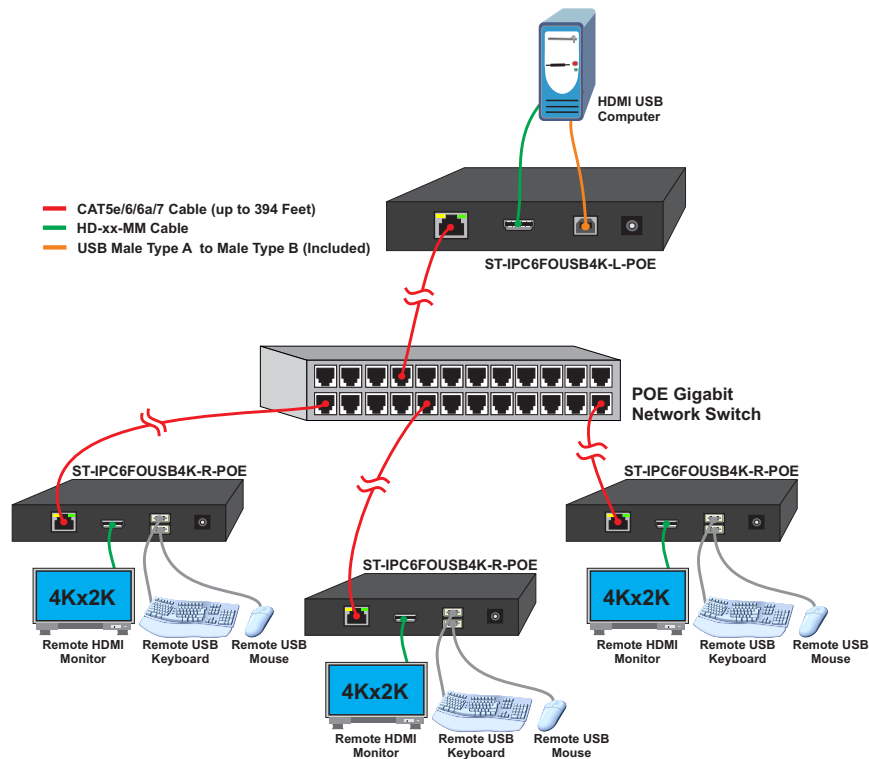
Extend 4Kx2K 30Hz HDMI monitor, USB keyboard, USB mouse, and IR up to 394 feet using Gigabit Ethernet. Create video walls up to 8x16 – 128 screens.

Configuration and Cable Illustrations

Point-to-Point Connection



Point-to-Many Connection



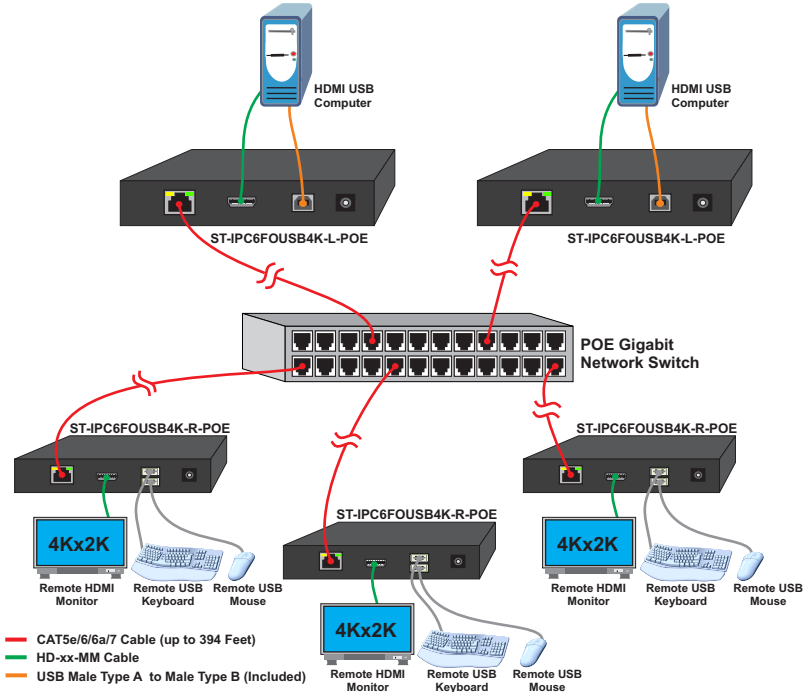
4K 10.2Gbps HDMI USB KVM Extender Over IP via CATx Cable with POE & Video Wall Support

XTENDEX®

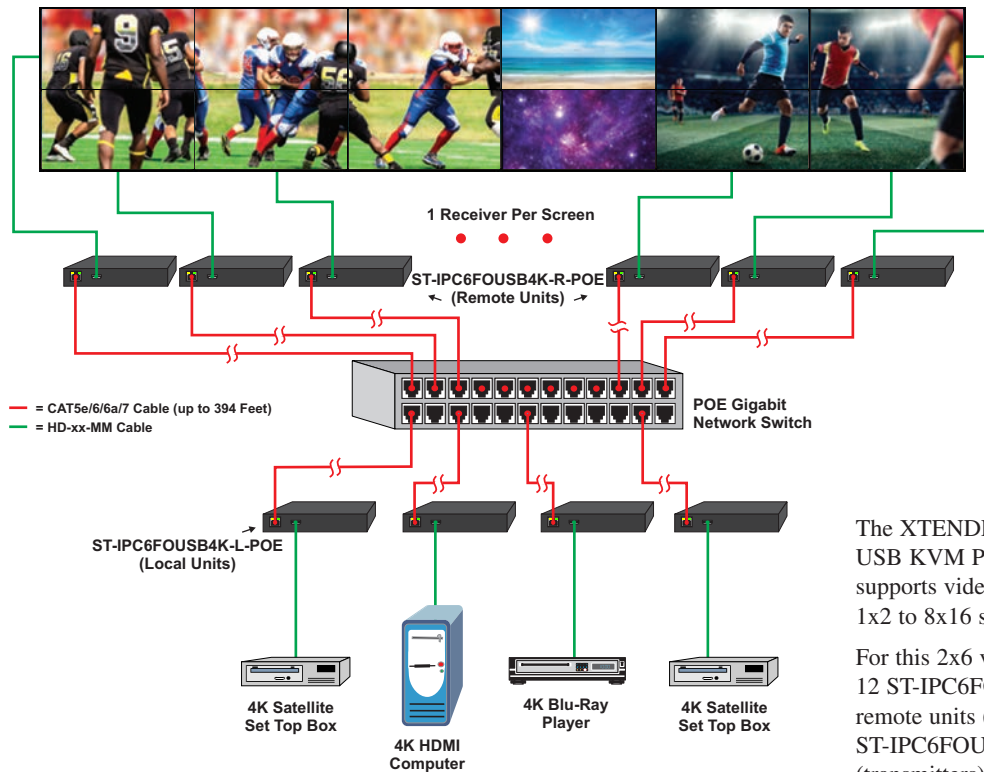
Extend 4Kx2K 30Hz HDMI monitor, USB keyboard, USB mouse, and IR up to 394 feet using Gigabit Ethernet. Create video walls up to 8x16 – 128 screens.

Configuration and Cable Illustrations

Many-to-Many Connection



Video Wall Connection



The XTENDEX® 4K 10.2Gbps HDMI USB KVM POE Extender Over IP supports video wall installations from 1x2 to 8x16 screens.

For this 2x6 video wall example, 12 ST-IPC6FOUSB4K-R-POE remote units (receivers) and four ST-IPC6FOUSB4K-L-POE local units (transmitters) are required.