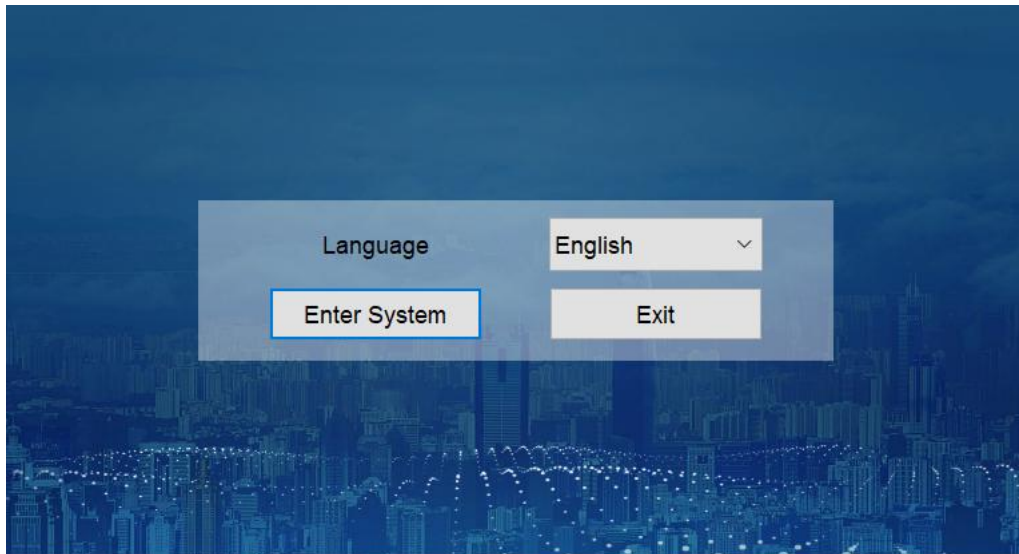
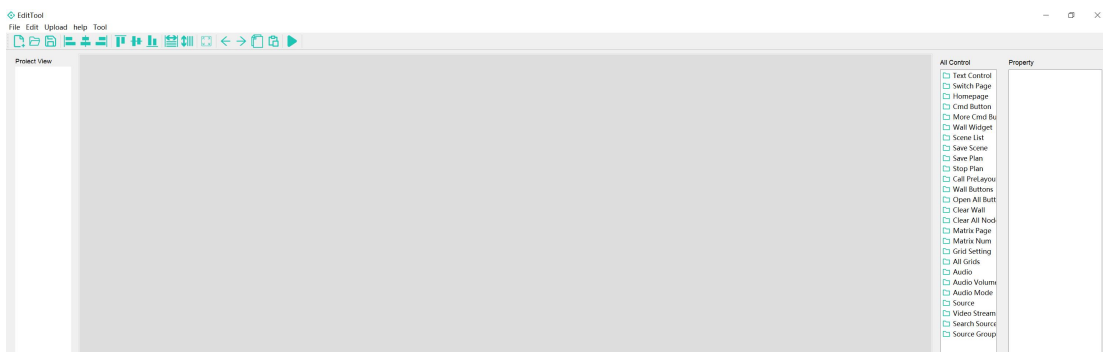


Operation Guide for DesignEditor software

Run the EditTool and click “Enter System” to start the Control UI designing:

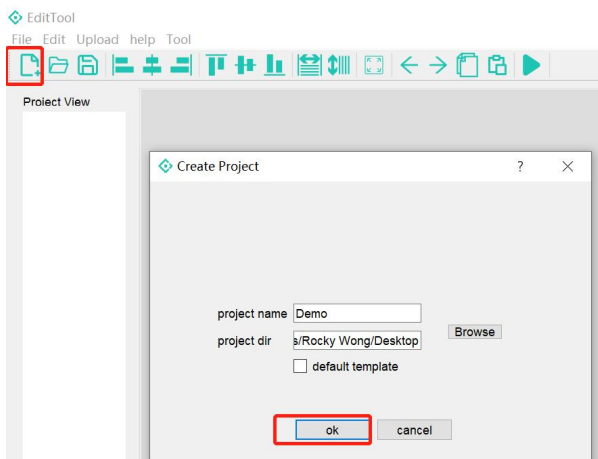


After enter to the system, it will be showing as the below:

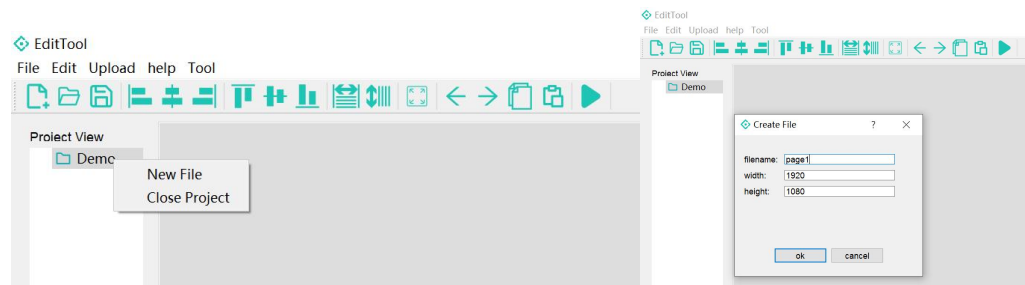


To start the project, Users could have 2 options:

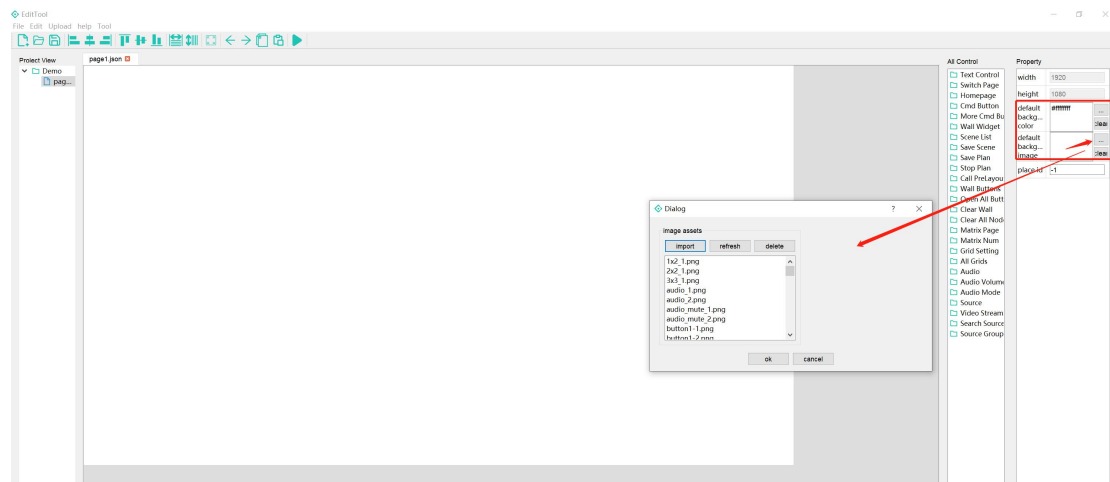
Option 1: Click “New” to start a new project, choose a name, project path, click “OK”



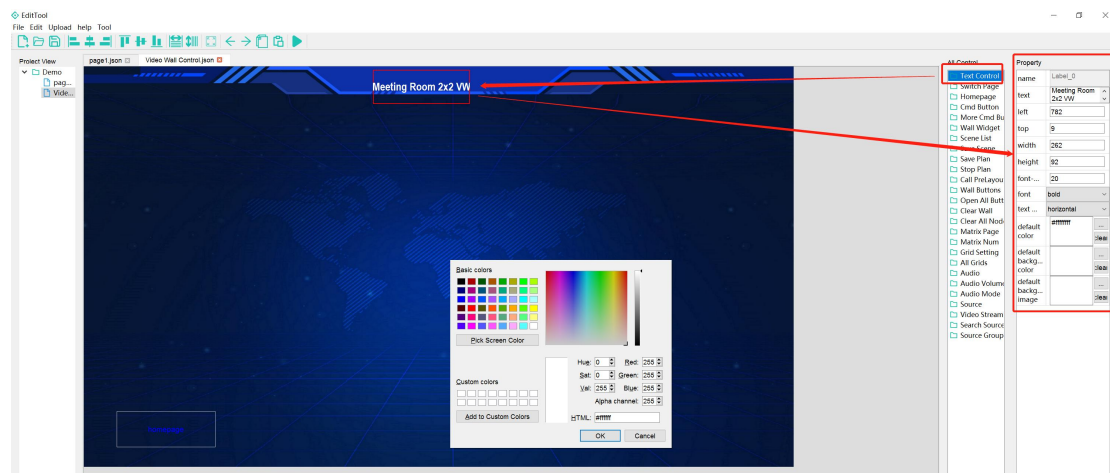
Then right click on the Demo project to start a new file



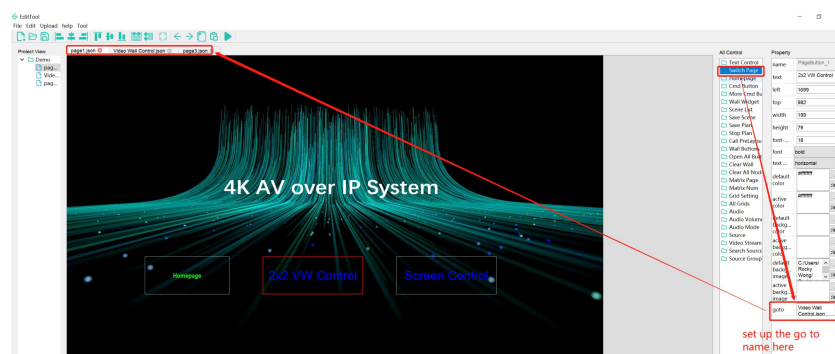
Can click and customize the background image or color from the right side:



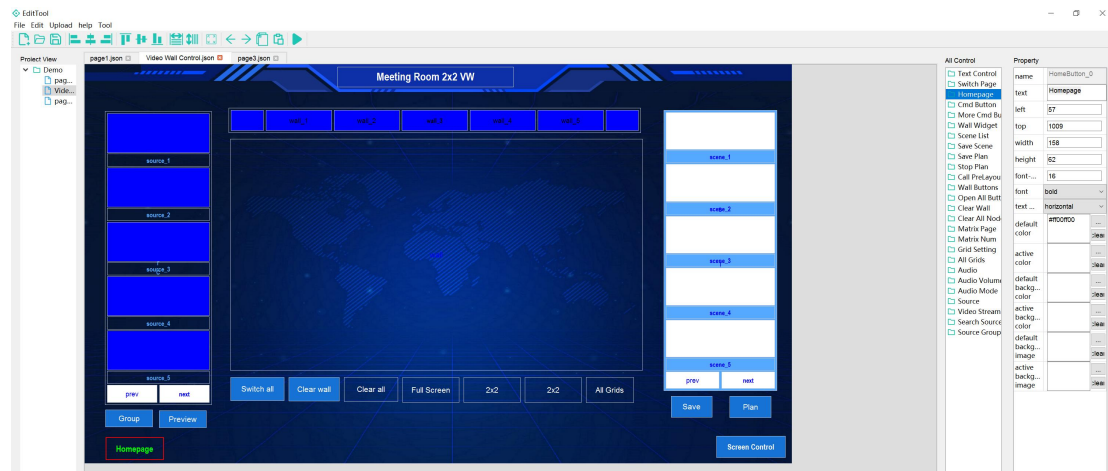
Text Control for adding the text, firstly will need to click Text Control, then use the mouse drag and drop on the middle page, then can do the text settings, including color, size, etc:



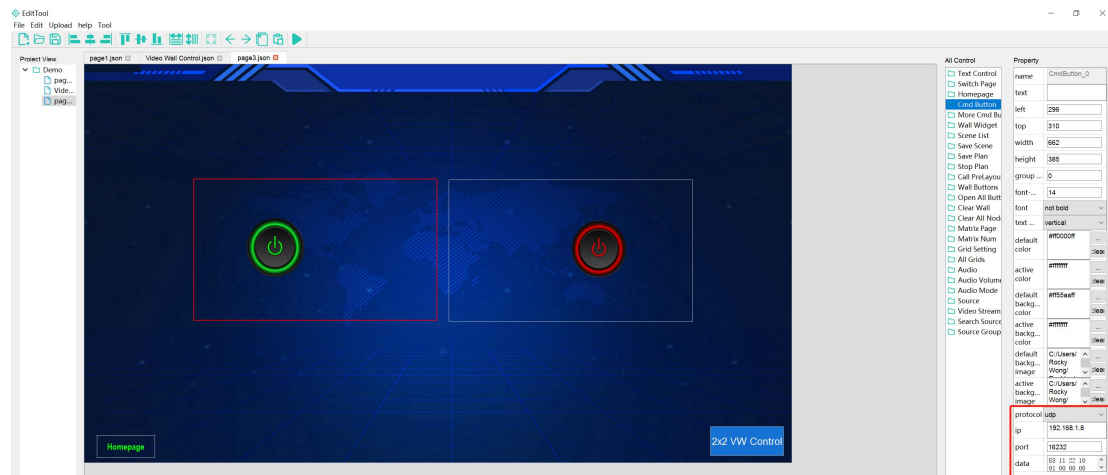
Switch Page: Add a Switch Page if there're more than 1 page, can add a Switch Page button:



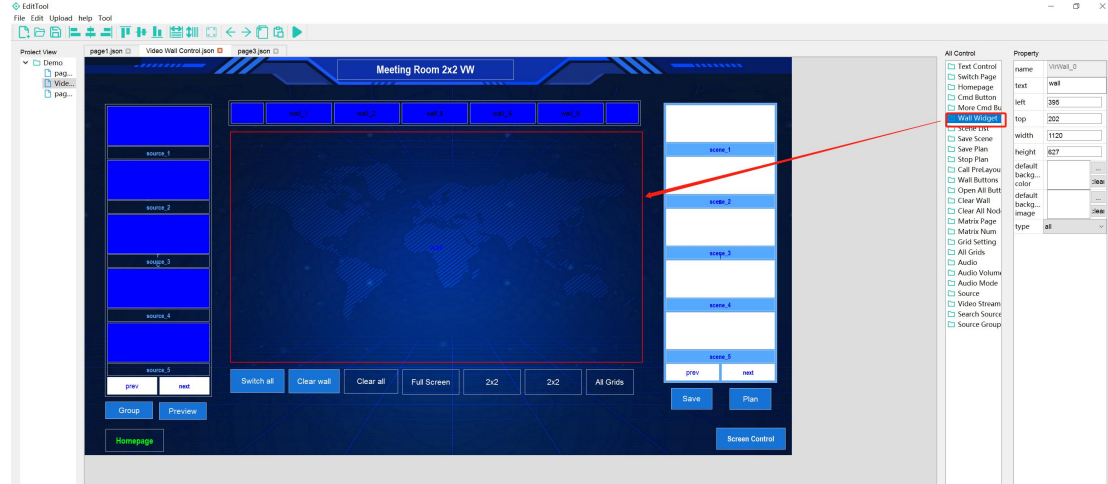
Homepage button is for users to get back to the homepage when use the DVSTool software/APPs.



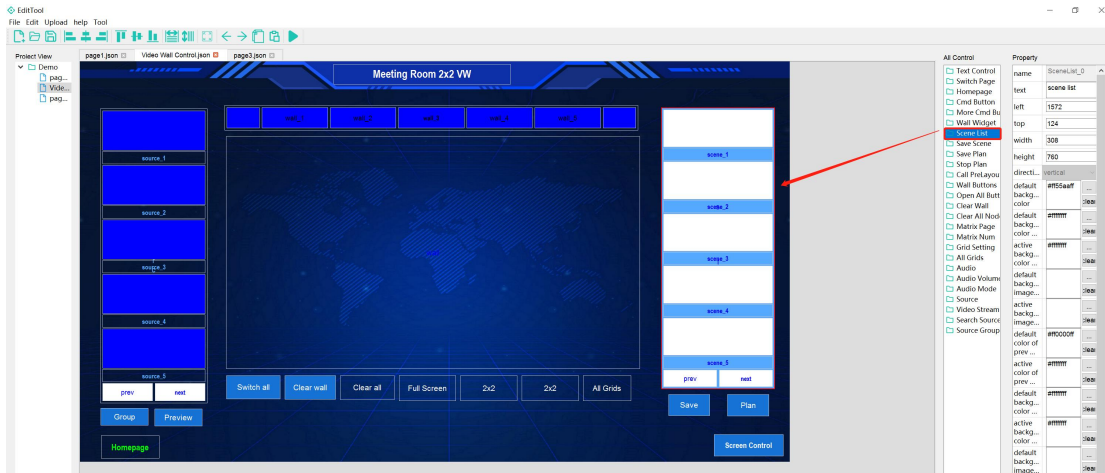
Cmd button and more cmd button is for using the RS232/485, RELAY, I/O those control ports from the Transmitters or receivers



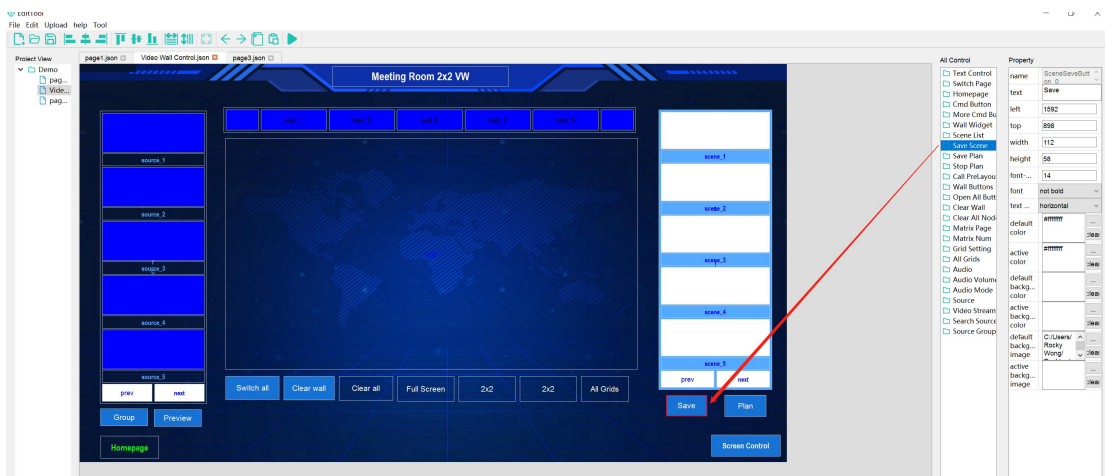
Wall Widget is for setting up the Video Wall screens



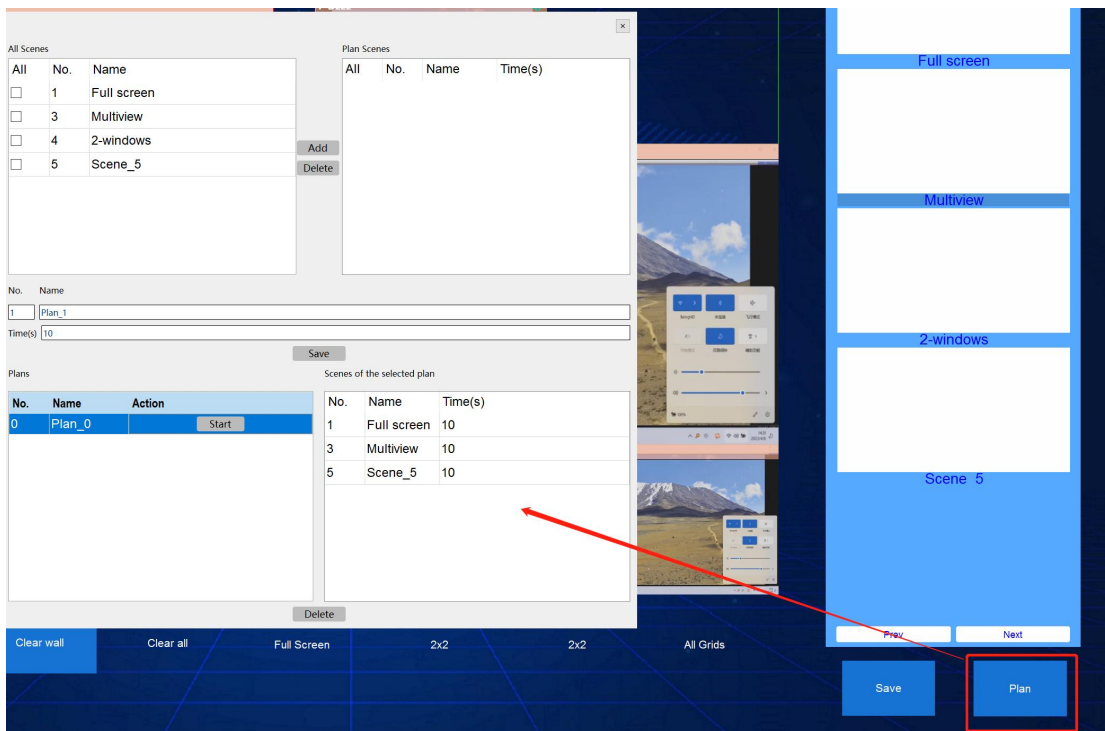
Scene List for showing the presets list, users can click the preset to review and recall



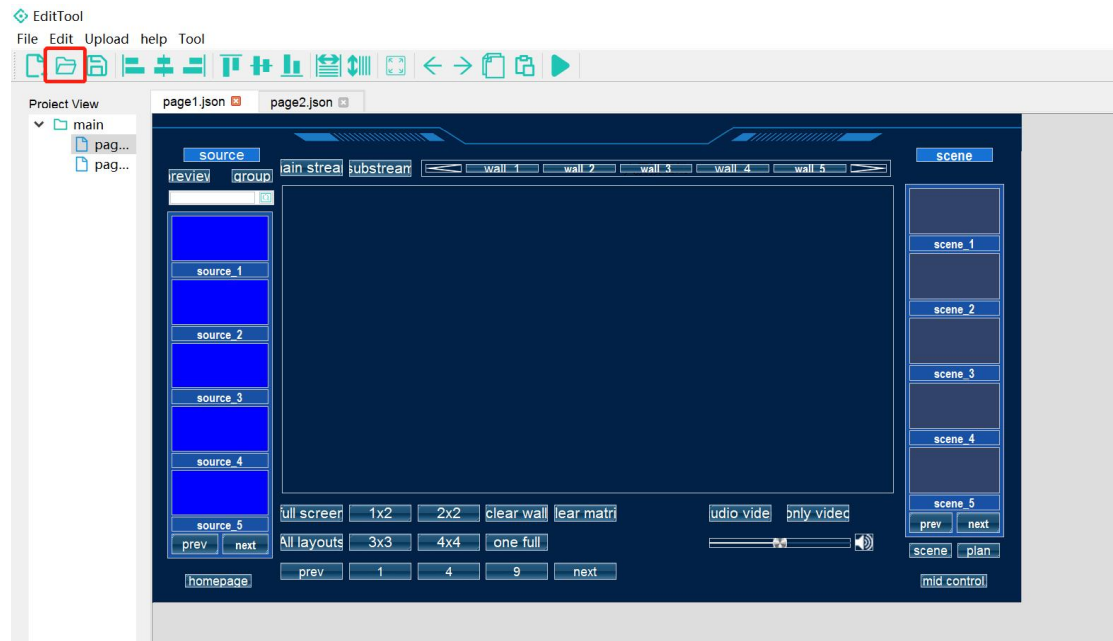
Save Scenes is for saving the presets:



Save Plan is for recycling the saved presets which can be selected from DVStool software/apps



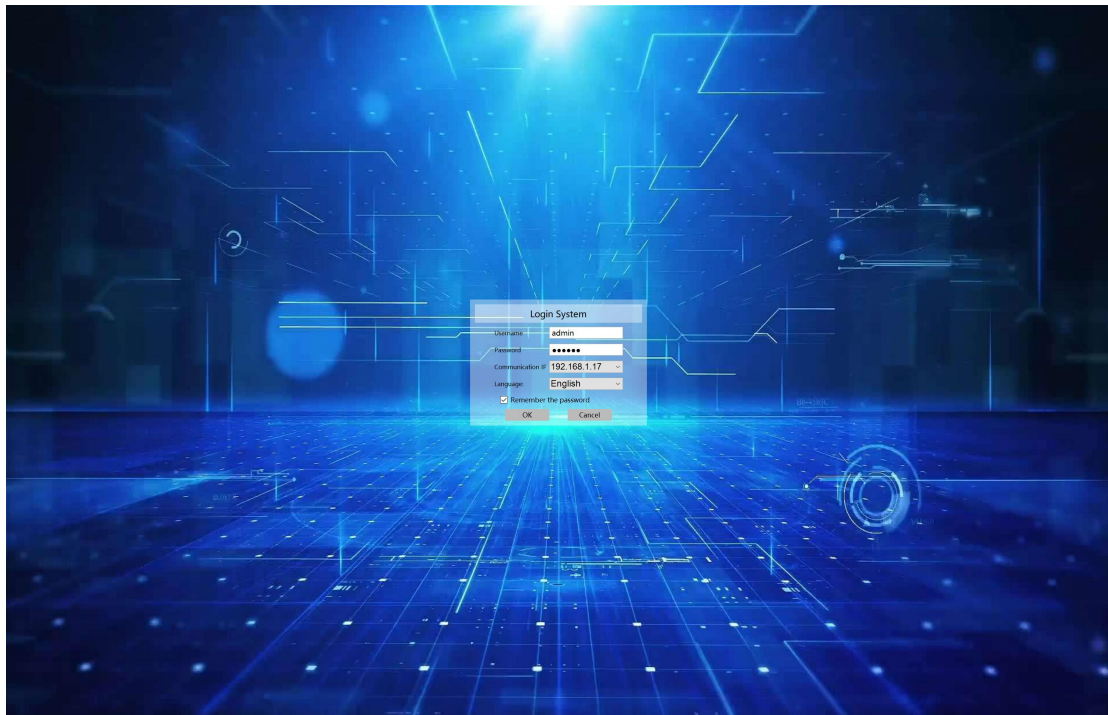
Option 2: Can open an exit project, the other settings will be just the same as the option 1.



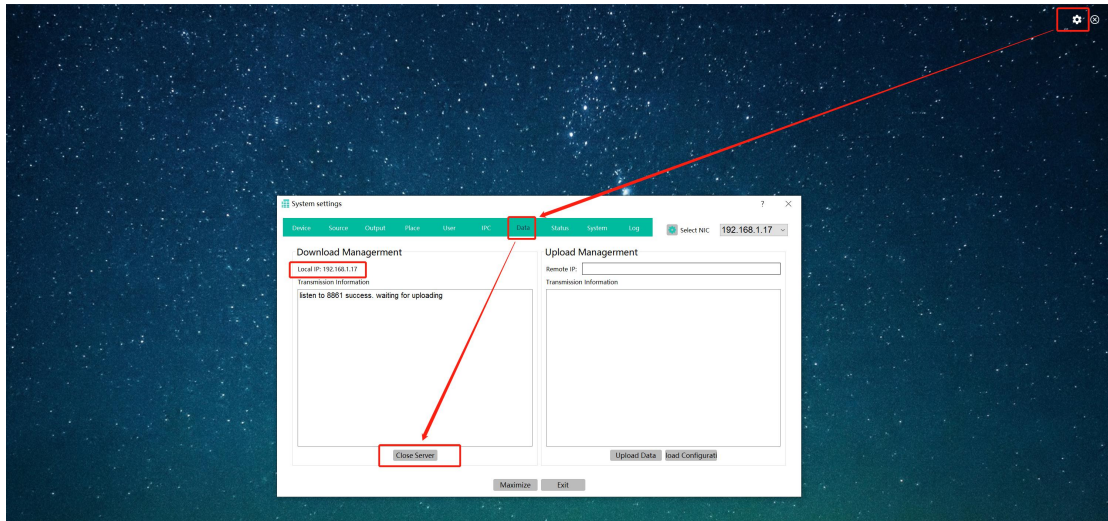
After created the project, next step will need to upload the project to the DVSTool control devices, but before uploading, we will have to Open Server on the DVSTool software/APPs.

Open Server steps:

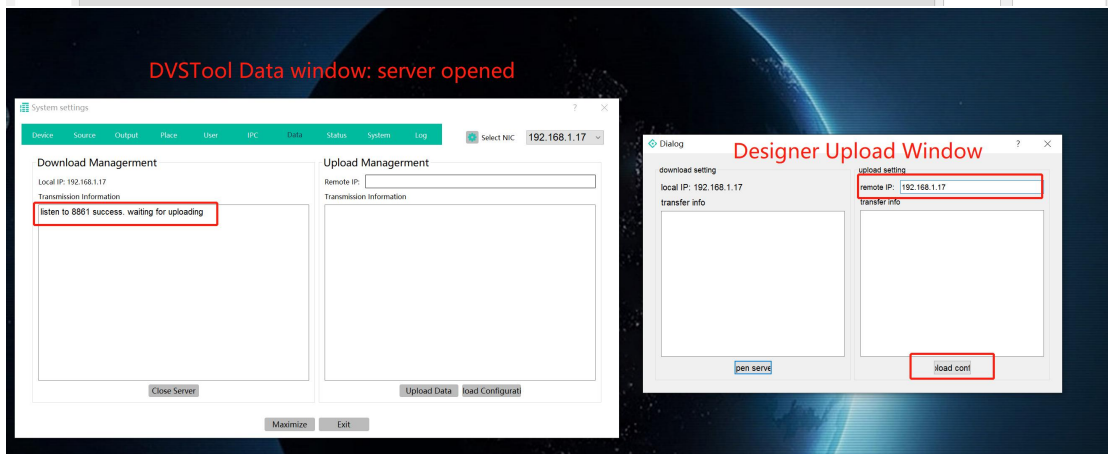
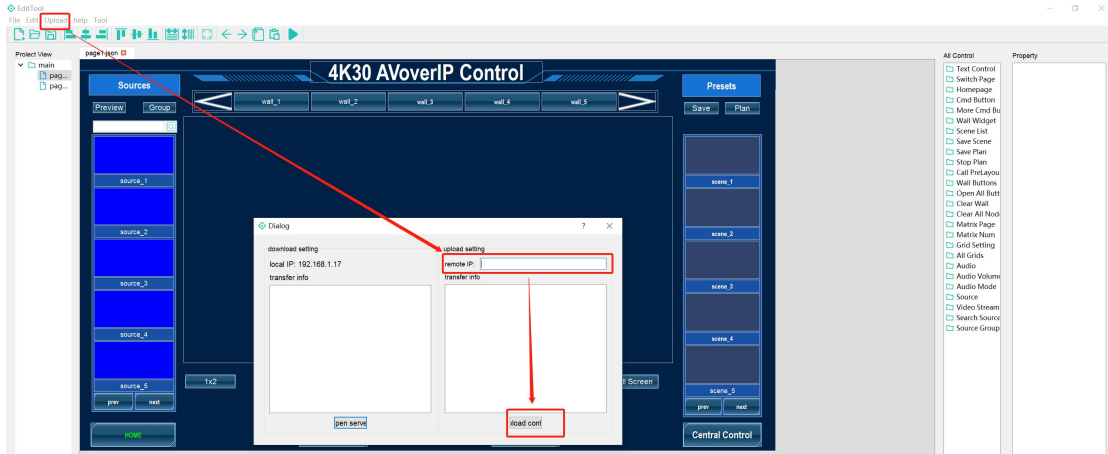
Step 1: Click and run the DVSTool, the default user name is admin, password is 123456:



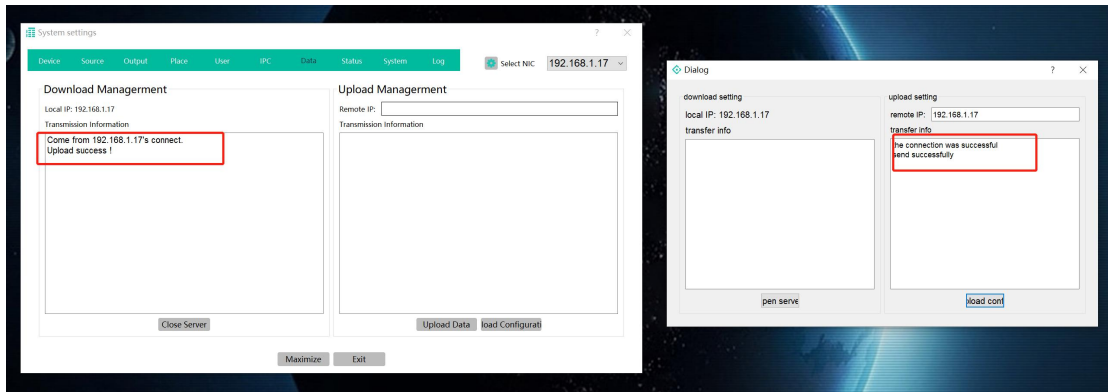
Step 2: click OK to login and then click the setting icon----Data---Open server



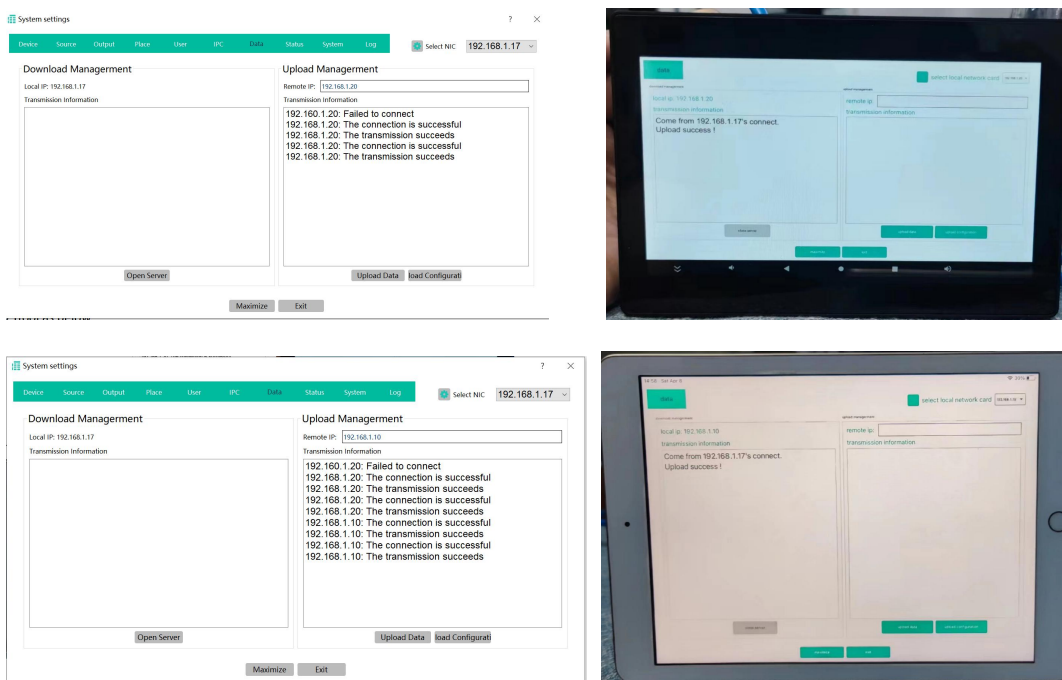
Then we can upload the created project from the Designer software, the remote IP will be the destination devices, such as the above we have the example is using 192.169.1.17, then we will just enter this IP address here to upload:



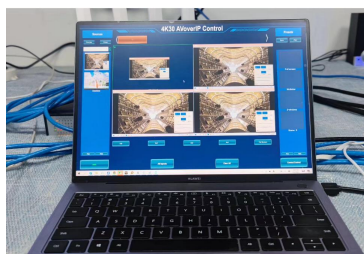
After uploaded the project successfully, it will be showing the success log:



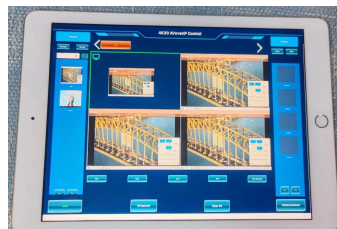
So for the Apps DVSTool, will also need to do the same as above steps: open server from the DVSTool, and then upload the project either from Designer or can upload from the other devices' DVSTool as below:



After the above uploading successfully, then can use the DVSTool software and APPs start controlling:



PC DVSTool Software



iPad DVSTool APP



Android DVSTool APP