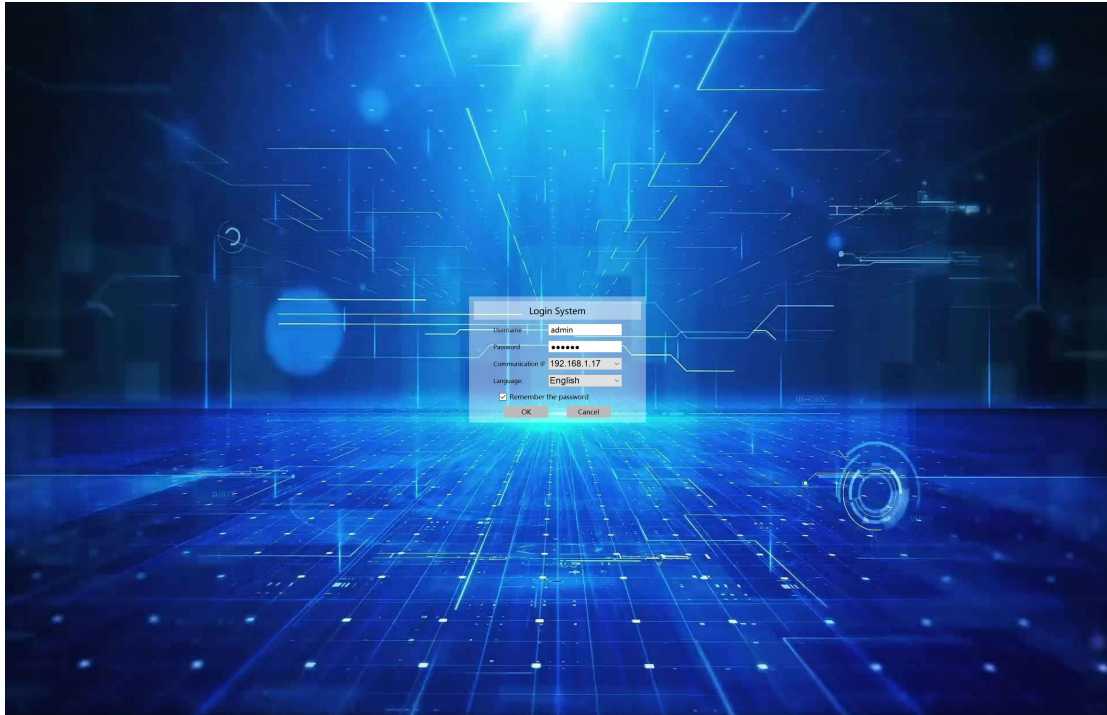


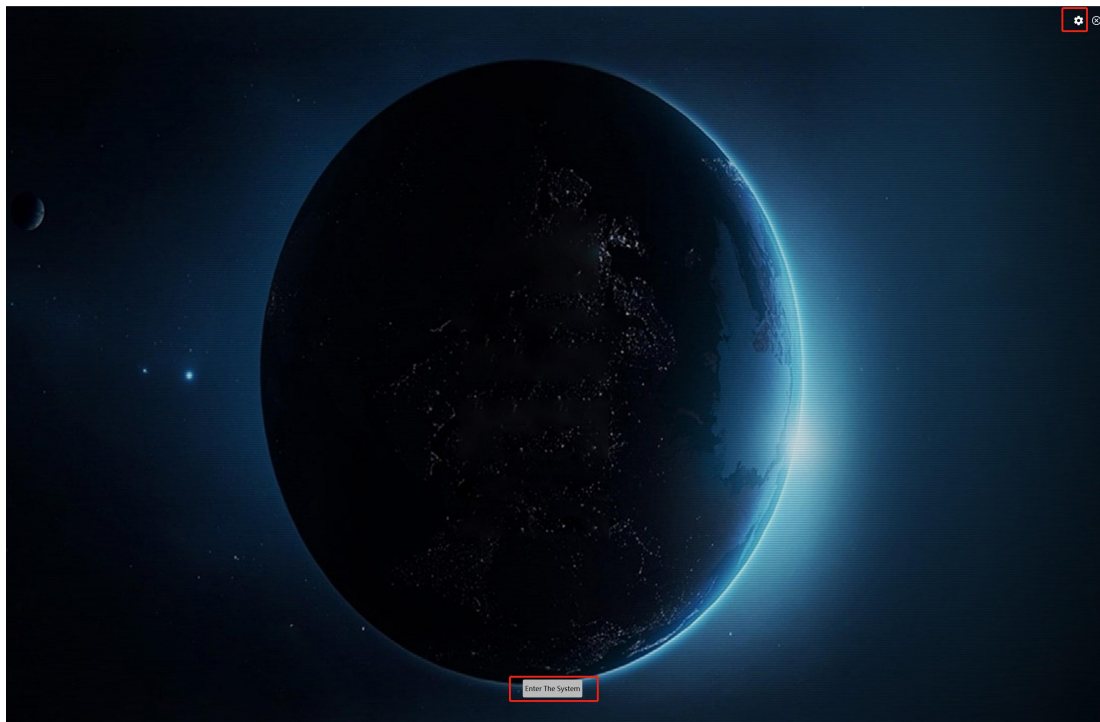
Operation Guide for DVSTool/xview Software

This software is for the Devices settings, control and firmware upgrade.
The default user name is admin, password is 123456

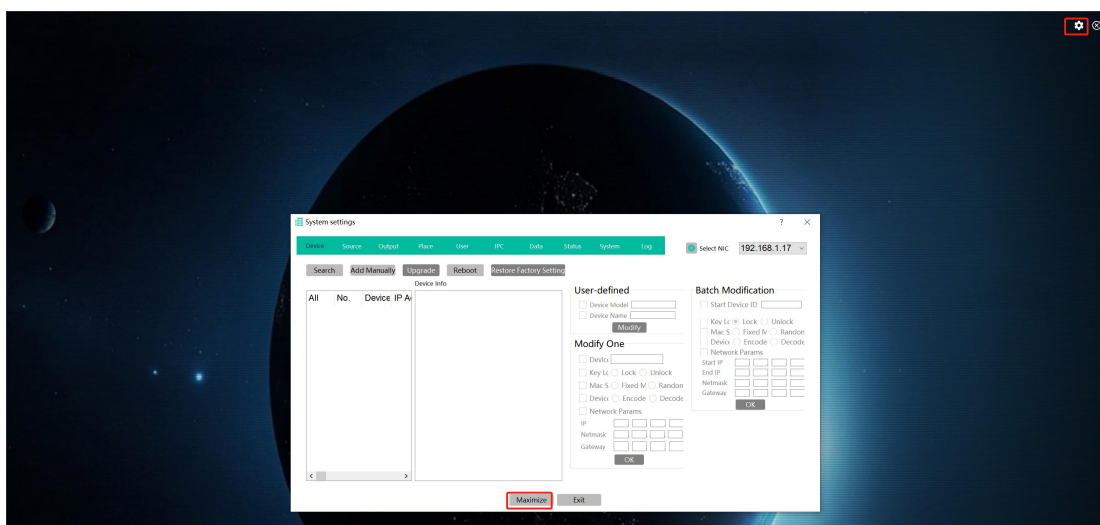


After login will be showing as the below:

Setting icon is for all the settings, IP address changes, firmware etc
Enter System will be for the Video wall and matrix switch controls



Settings icon: after click it, it will be showing this System setting window, we can click to maximumize it:



Device is for finding all the transmitters and receivers:

The screenshot shows a web interface for managing devices. At the top, there are tabs for 'Devices', 'Source', 'Output', 'Place', 'User', 'IPC', 'Data', 'Status', 'System', and 'Log'. Below these are buttons for 'Search', 'Add Manually', 'Upgrade', 'Reboot', and 'Restore Factory Settings'. The main area contains a table with columns: All, No., Device, IP Addr, Device Name, Subnet Mask, Gateway, Mac, Device Ty, Device Mode, Software Inf, Hardware Info, and Net Speed. The table lists six devices with various configurations. To the right, there are two panels: 'User-defined' and 'Batch Modification'. The 'User-defined' panel has fields for Device Model, Device Name, and a 'Modify' button. The 'Batch Modification' panel has checkboxes for Start Device ID, Key Lc, Lock, Unlock, Mac S, Fixed M, Random, Device, Encode, Decode, Network Params, Start IP, End IP, Network, and Gateway, with an 'OK' button.

From this Devices settings, we can set the device either work as Encoder or decoder, also the IP address settings, also need to have the start ID filled out, can set one by one or use the batch configuration:

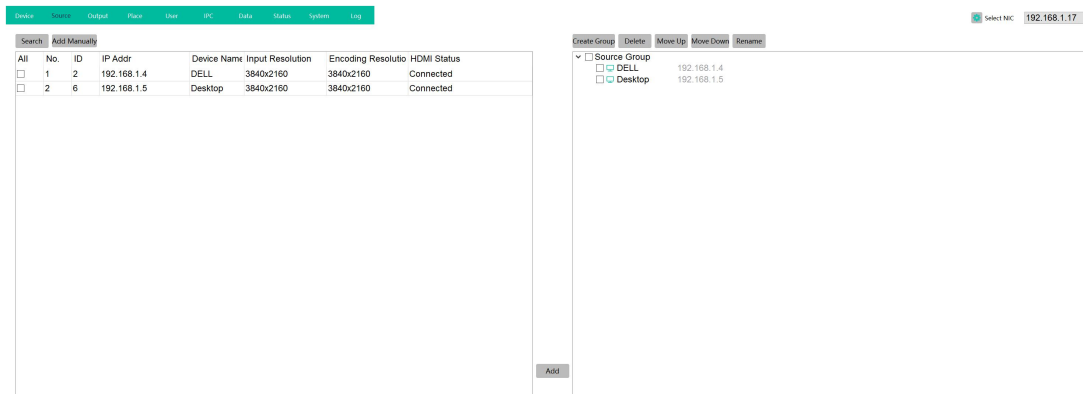
This screenshot is similar to the first one but highlights a specific row in the device table (Device No. 3, IP 192.168.1.6) with a red box. A red arrow points from this row to the 'Batch Modification' panel, specifically to the 'Device' checkbox under 'Network Params'. The 'Batch Modification' panel also shows numerical input fields for Start IP, End IP, Network, and Gateway.

Devices upgrading:

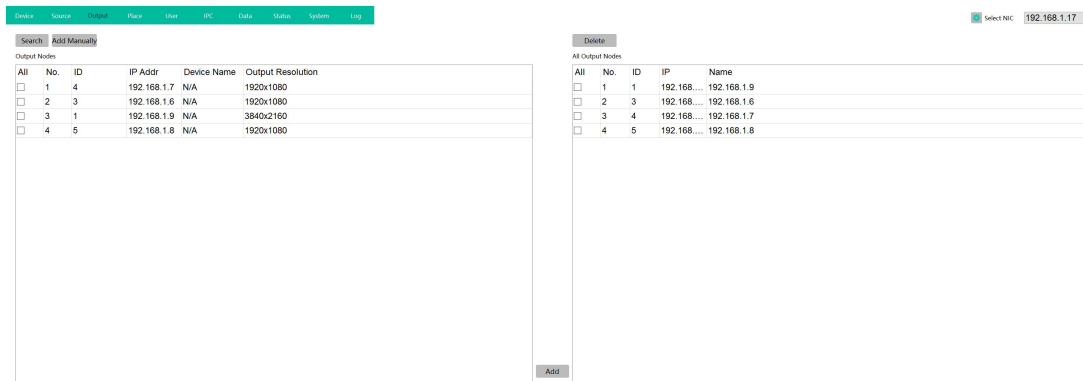
This screenshot shows the 'Upgrade' button highlighted in the top navigation bar. A 'Firmware upgrade' dialog box is open, displaying a table of upgrade progress for five devices. The dialog box has a title bar, a warning message, and an 'Upgrade' button. The table shows columns for No., IP, Model, Progress, and Status.

No.	IP	Model	Progress	Status
0	192.168...	M10...	13%	
1	192.168...	M10...	14%	
2	192.168...	M10...	14%	
3	192.168...	M10...	14%	
4	192.168...	M10...	13%	
5	192.168...	M10...	14%	

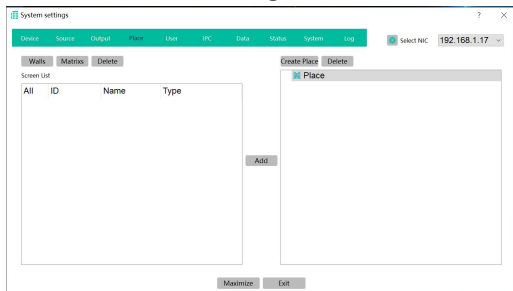
Source tab is for input sources grouping:



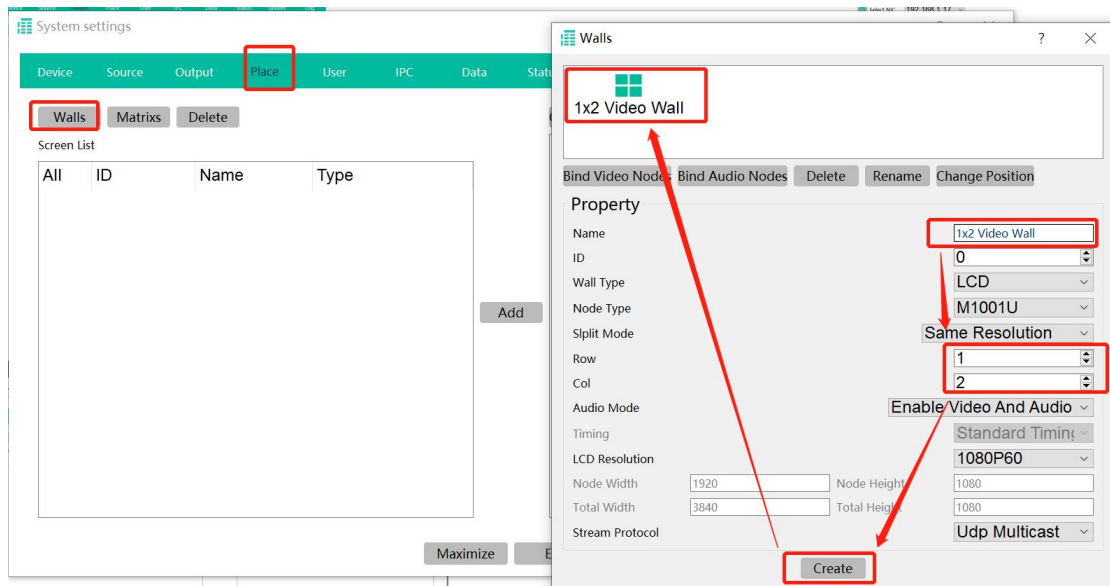
Output for adding the outputs to list on the right side:



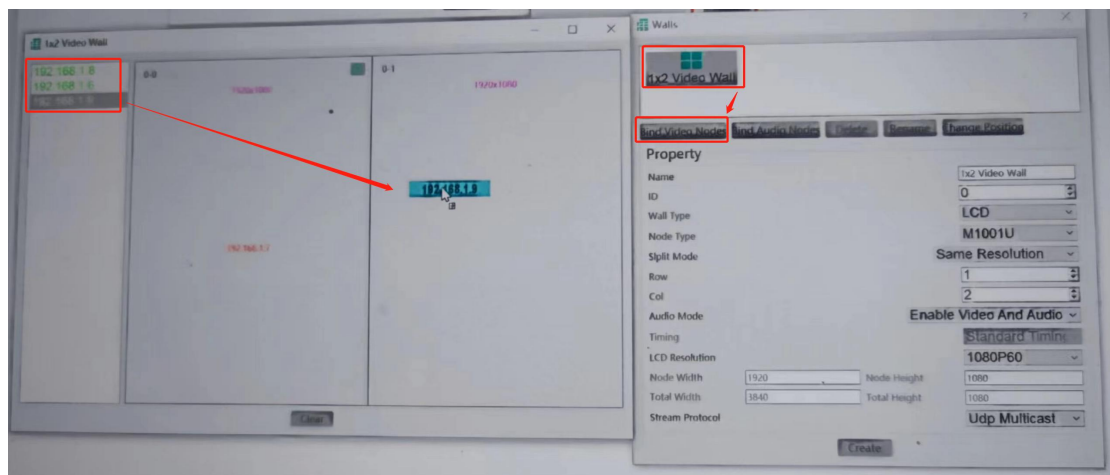
Place is for creating the Video Wall or Matrix Switcher:



Create Video Walls



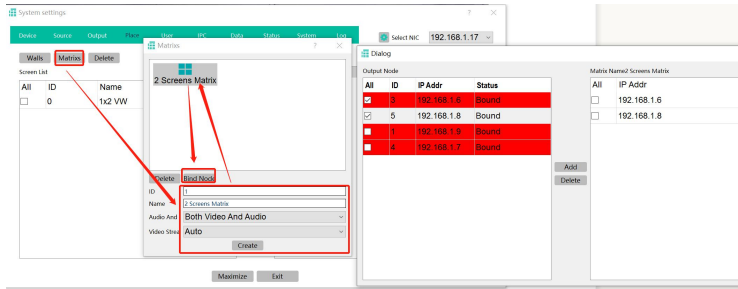
After create the video wall, will need to bind the video nodes:



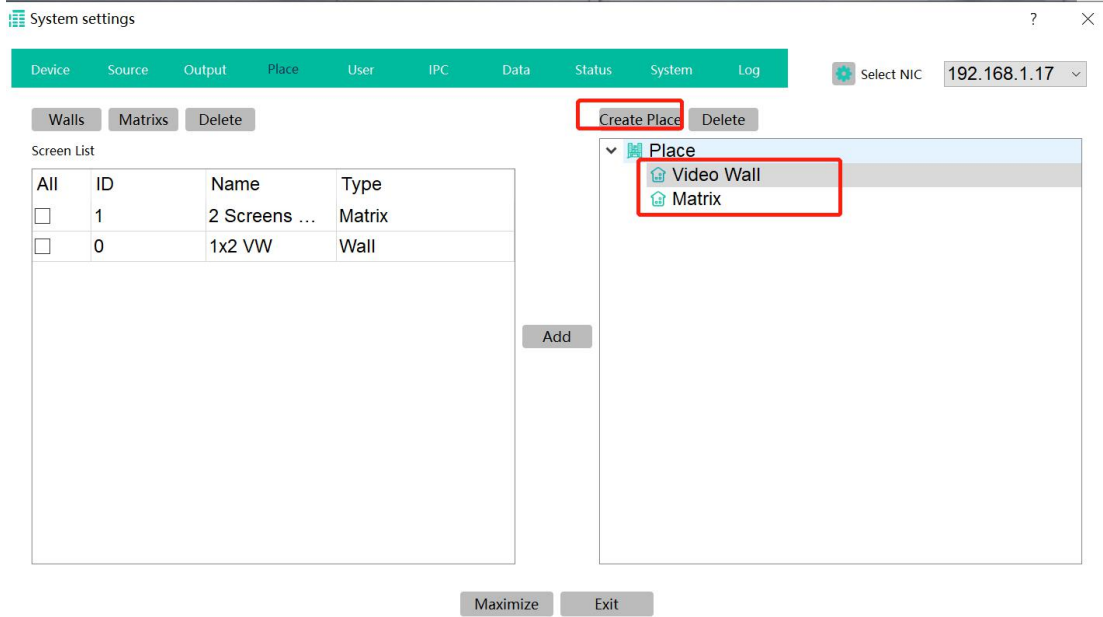
When drag the devices from the left side to the video wall, the display will be lighted up:



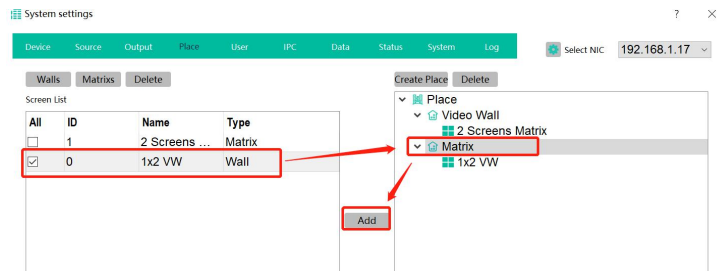
Matrix create and bind the receivers:

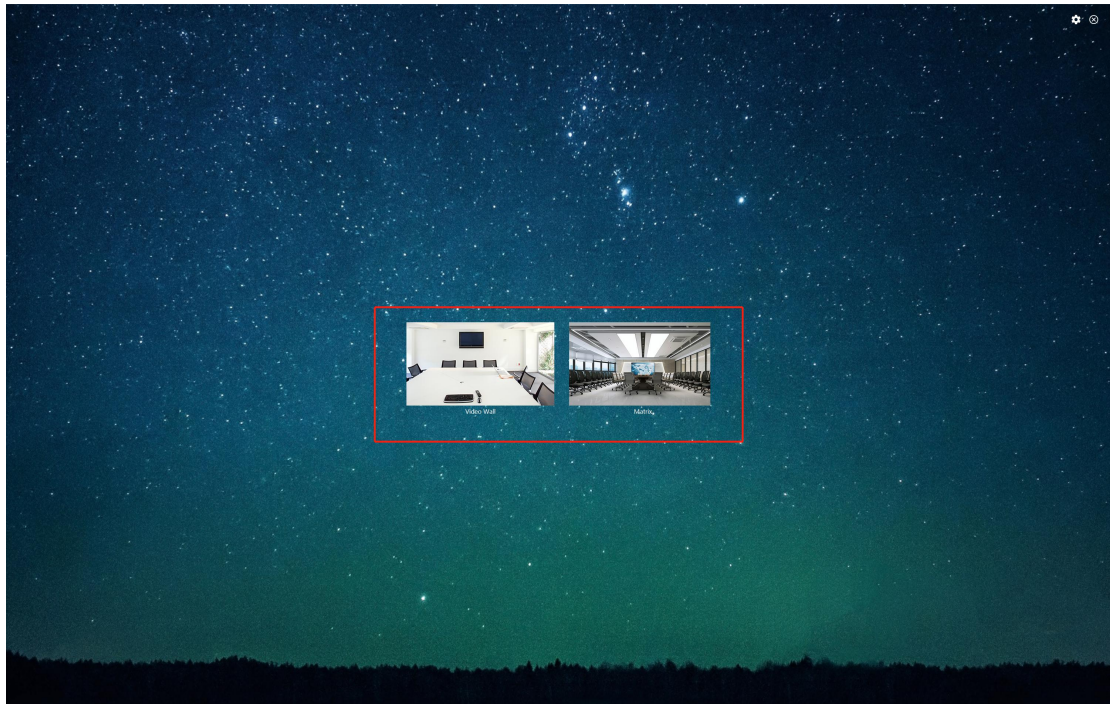


Then create places, here created 2 examples:



Select the screen list and add to the places:





User tab is for change password or adding users with different rights:

System settings

Device Source Output Place User IPC Data Status System Log

Select NIC 192.168.1.17

Users

ID	Account	Password	Permission
0	admin	123456	Administrator
1	Rocky	123456	User

Username: Rocky
Password: 123456
Permission: User

Add User Delete User Modify User

Permission Management

Source And Group

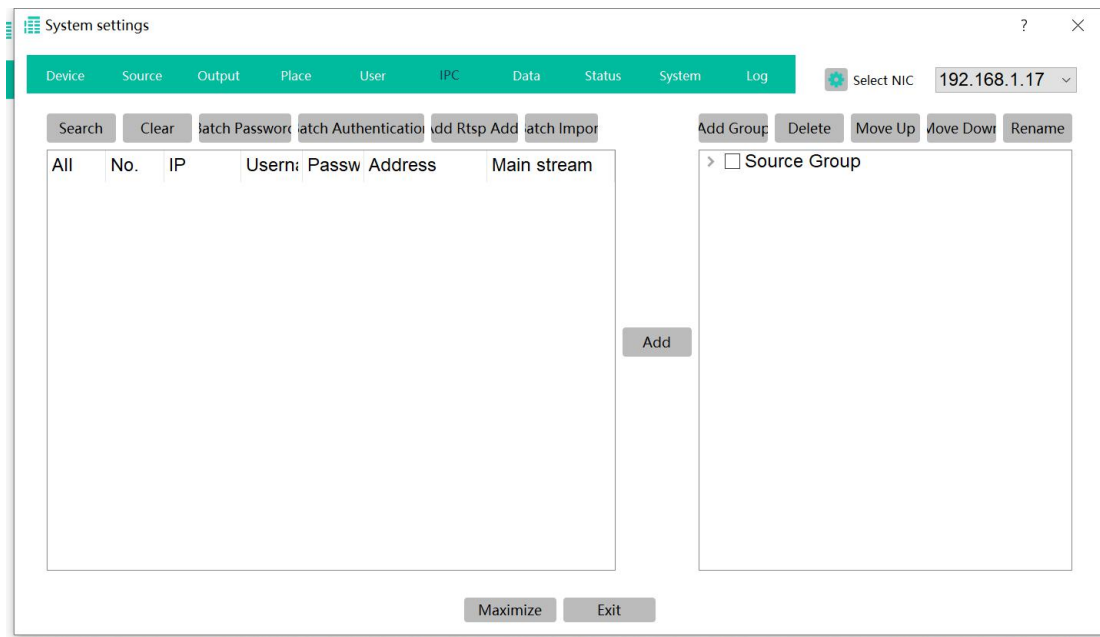
- Source Group
 - DELL
 - Desktop

Places

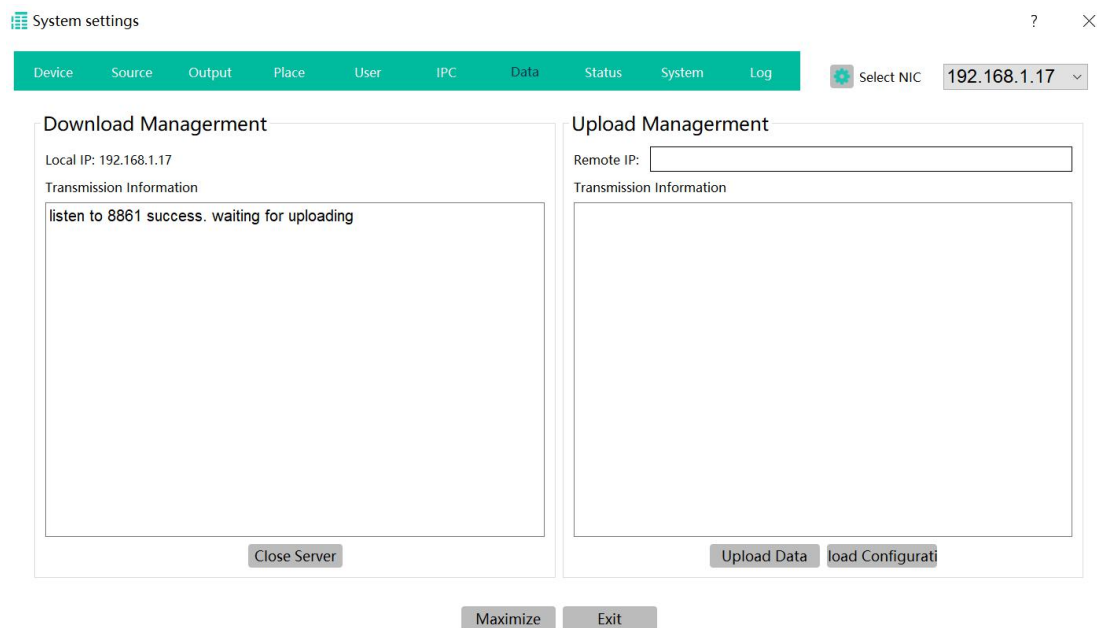
- Place
 - Video Wall
 - 2 Screens Matrix
 - Matrix
 - 1x2 VW

Maximize Exit

IPC for adding the IP cameras which are in the LAN:



Data is for opening server to accept the Designer project uploading or uploading the data or configuration to the other control devices.



Status for the showing the devices status:

ID	IP	Device Name	Device T	Status	Sent	Received	CPU	Memory
2	192.168.1.4	DELL	Input	Online	1.33 Mbps	34.00 Kbps	20.00%	total:256.44 MB, used:50.64 MB
6	192.168.1.5	Desktop	Input	Online	1.24 Mbps	28.00 Kbps	14.53%	total:256.44 MB, used:49.91 MB
1	192.168.1.9	192.168.1.9	Output	Online	47.00 Kbps	1.00 Kbps	2.20%	total:256.44 MB, used:35.81 MB
3	192.168.1.6	192.168.1.6	Output	Online	0.00 Kbps	2.00 Kbps	5.71%	total:256.44 MB, used:36.03 MB
4	192.168.1.7	192.168.1.7	Output	Online	0.00 Kbps	47.00 Kbps	3.25%	total:256.44 MB, used:36.39 MB
5	192.168.1.8	192.168.1.8	Output	Online	0.00 Kbps	2.00 Kbps	6.66%	total:256.44 MB, used:36.02 MB

Enter System to start control the video wall or matrix switchers:

