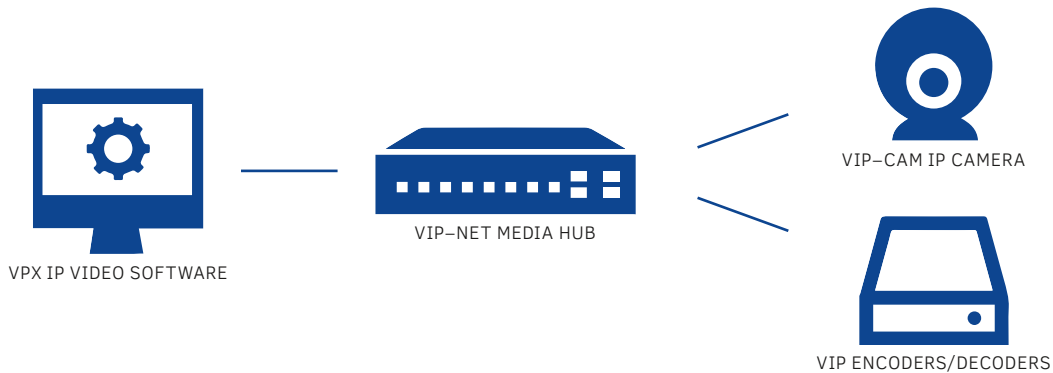


# AV OVER IP SOLUTIONS GUIDE

## OVERVIEW

PureLink's VIP line of robust **A/V over IP solutions** provide scalable, multi-source audio and video distribution over the network, combining proven hardware components with a server-based software application designed to simplify setup, configuration, and management of VIP systems.



Hardware options including the **VIP-T400/400/T300** encoders/decoders and purpose-built PoE CAT/Fiber Media Hubs, together with the revolutionary **VPX IP Video Management Software**, deliver a complete, **easy-to-manage** A/V over IP distribution system.

### VPX KEY FEATURES:

- Third party control automation API
- Advanced video wall processing
- Preset creation & scheduling
- Device management
- Network discovery
- Simplified setup

### COMMON APPLICATIONS

- Retail
- Conferencing
- Broadcast
- Digital Signage
- Security & Surveillance
- Entertainment Venues
- Restaurants & Hospitality
- House of Worship
- E-sports

## ENCODERS / DECODERS

### VIP-T400 E / D

4K60 HDMI & USB / KM CAT and Fiber – AV over IP Distribution System



VIP-T400-E



VIP-T400-D

- 4K60 4:4:4 HDR
- Ultra-low latency (<17ms)
- Data rate 300 Mbps typical; 50-850 Mbps range, variable
- Fiber or CAT transport – 1G port
- Extend signals up to 120 meters over CAT6, 300 meters using a network switch, and up to 2km with SFP fiber single mode
- HDCP 2.2 compliant
- USB 1.1 and 2.0 including USB camera
- Comprehensive diagnostics via API – device discovery, signal data, and EDID
- Instant switching (same resolutions)
- Multiple control interfaces – built-in web interface, front panel buttons, VPX Management Software, QSC modules, and 3rd party control development via API

- Built-in video wall processing (up to 8x8)
- Built-in scaler on the receiver (decoder)
- Image rotation; 90, 180 degrees
- IR and RS232 extension
- TCP / IP to RS232
- HDMI loop-out on TX (encoder)
- Powered by included AC power adapter, or via PoE 802.3af (8.5W)
- Dolby, DTS, and LPCM audio and more
- Matrix switching systems up to 999 sources and 65K displays
- Rack-mount options available



### VIP-T400-E-WP

4K60 Wallplate Encoder with USB 2.0 and Audio Insert / Extract



Front



Back

- Compatible with all VIP-T400 devices
- PoE 802.3af powered
- HDMI 2.0 4K60

- HDR10 / 10+
- USB 2.0
- <17ms latency
- Audio Insert / Extract



## ENCODERS / DECODERS

### VIP-400 E / D

4K60 HDMI & USB / KM CAT and Fiber – AV over IP Distribution System



VIP-400-E



VIP-400-D

- 4K60 4:4:4 HDR
- Ultra-low latency (<17ms)
- Data rate 300 Mbps typical; 50-850 Mbps range, variable
- Fiber or CAT transport – 1G port
- Extend signals up to 120 meters over CAT6, 300 meters using a network switch, and up to 2km with SFP fiber single mode
- HDCP 2.2 compliant
- USB 1.1 and 2.0 including USB camera
- Comprehensive diagnostics via API – device discovery, signal data, and EDID
- Instant switching (same resolutions)
- Multiple control interfaces – built-in web interface, front panel buttons, VPX Management Software, QSC modules, and 3rd party control development via API
- Built-in video wall processing (up to 8x8)
- Built-in scaler on the receiver (decoder)
- Image rotation; 90, 180 degrees
- IR and RS232 extension
- TCP / IP to RS232
- HDMI loop-out on TX (encoder)
- Powered by included AC power adapter, or via PoE 802.3af (8.5W)
- Dolby, DTS, and LPCM audio and more
- Matrix switching systems up to 999 sources and 65K displays
- Rack-mount options available

## ENCODERS / DECODERS

### VIP-T300 E / D



VIP-T300 E

- Ultra HD / 4K@30Hz (4:4:4), 4K@60Hz (4:2:0)
- Ultra-low latency (<17ms)
- HDCP 2.2 compliant
- Video wall processing (up to 8x8 configuration) and output scaler
- PoE 802.3af compliant
- Fiber SFP slot for optional SFP modules
- USB 2.0 Keyboard / Mouse Extension
- Extend signals up to 300 m. using network switch

### 4K HDMI & USB / KM over IP Distribution System



VIP-T300 D

- Comprehensive diagnostics via API – device discovery, signal data, and EDID
- Control via web interface, front panel, IR, VPX Management Software, and third party API
- Bi-directional RS-232 and IR Remote Control
- Layered switching of audio, video, USB, RS-232 and IR
- HDMI loop-out on TX (encoder)
- Dolby, DTS, and LPCM audio
- Rack mount option available



### VIP-200-II E / D



VIP-200 II E

- Full HD / 1080p@60Hz
- HDCP 1.3 compliant
- Video wall processing (up to 8x8 configuration)
- Built-in scaler (Rx) – pass through or lock output resolutions
- RS-232 extension / steerable distribution
- USB 2.0 Keyboard / Mouse Extension
- Audio insertion and extraction

### HDMI & USB / KM over IP Distribution System



VIP-200 II D

- Bi-directional RS-232 and IR control
- Input selection via remote control, front panel, VPX, or third party control system
- Layered switching of audio, video, USB, RS-232, and IR
- Comprehensive diagnostics via API – device discovery, signal data, and EDID
- Loop-out on transmitter (encoder)
- Point-to-Point, Distribution, Switching, and Matrix systems
- Rack mount option available



## VIP-101-E-WP

HDMI over IP Wall Plate Transmitter w / PoE



FRONT



BACK

- Full HD / 1080p@60Hz
- HDCP 1.3 compliant
- Point-to-Point, Distribution, Switching, and Matrix Systems
- PoE 802.3af
- Compatible with VIP-100 II System
- Decora 1-Gang Wall Plate
- H.264 codec – low bandwidth (25Mbps max)

## VIP-100-II E / D

HDMI over IP Distribution System w / PoE



VIP-100-II-E



VIP-100-II-D

- Full HD / 1080p@60Hz
- HDCP 1.3 compliant
- LED channel display
- Input selection via remote control
- Point-to-Point, Distribution, Switching, and Matrix Systems
- PoE 802.3af
- RS-232 & IR extension / distribution
- HDMI loop-out on transmitter encoder
- H.264 codec – low bandwidth (25Mbps max)



## VIP-STREAM-200

HDMI Streaming Encoder



- Stream to multiple platforms simultaneously
- YouTube, FaceBook, Twitter, and more
- Compatible with displays with streaming input
- Easy one time setup
- Simple front panel controls and diagnostics
- Stream any HDMI source anywhere: local or worldwide



## VPX IP VIDEO MANAGEMENT SOFTWARE

The **VPX IP Video Management Software** offers advanced system tools that simplify setup and operation including automatic discovery of VIP-200 / T300 / 400 / T400 transmitter and receiver modules, preset and automation schedule creation, external control, API, detailed diagnostic reporting, and more.

- **Device Discovery** – Detects all available transmitters and receivers
- **Device Mapping** – Automatically build I / O map or manually create/edit
- **Presets** – Create / preview up to 16 presets and automate execution schedules
- **Browser Interface** – Easy access through options such as Wi-Fi tablets
- **Advanced Diagnostics** – Monitor entire system with real-time visual feedback

### VPX IP VIDEO MANAGEMENT SOFTWARE FEATURES

#### FEATURES

- |  |  |
|--|--|
| ■ Windows Server Program               | ■ Third Party Control via HTTP API           |
| ■ Browser-based UI                     | ■ VIP-200 Support with video wall / scaling  |
| ■ Auto Discovery                       | ■ VIP-T300 Support with video wall / scaling |
| ■ Manual Configuration                 | ■ VIP-400 Support with video wall / scaling  |
| ■ Dynamic Diagnostics                  | ■ VIP-T400 Support with video wall / scaling |
| ■ Automated Presets                    | ■ Future VIP Modules                         |
| ■ Preset Preview                       | ■ Up to 32x32 Matrix                         |
| ■ Event Log with Date / Keyword Filter | ■ WallMaster™                                |



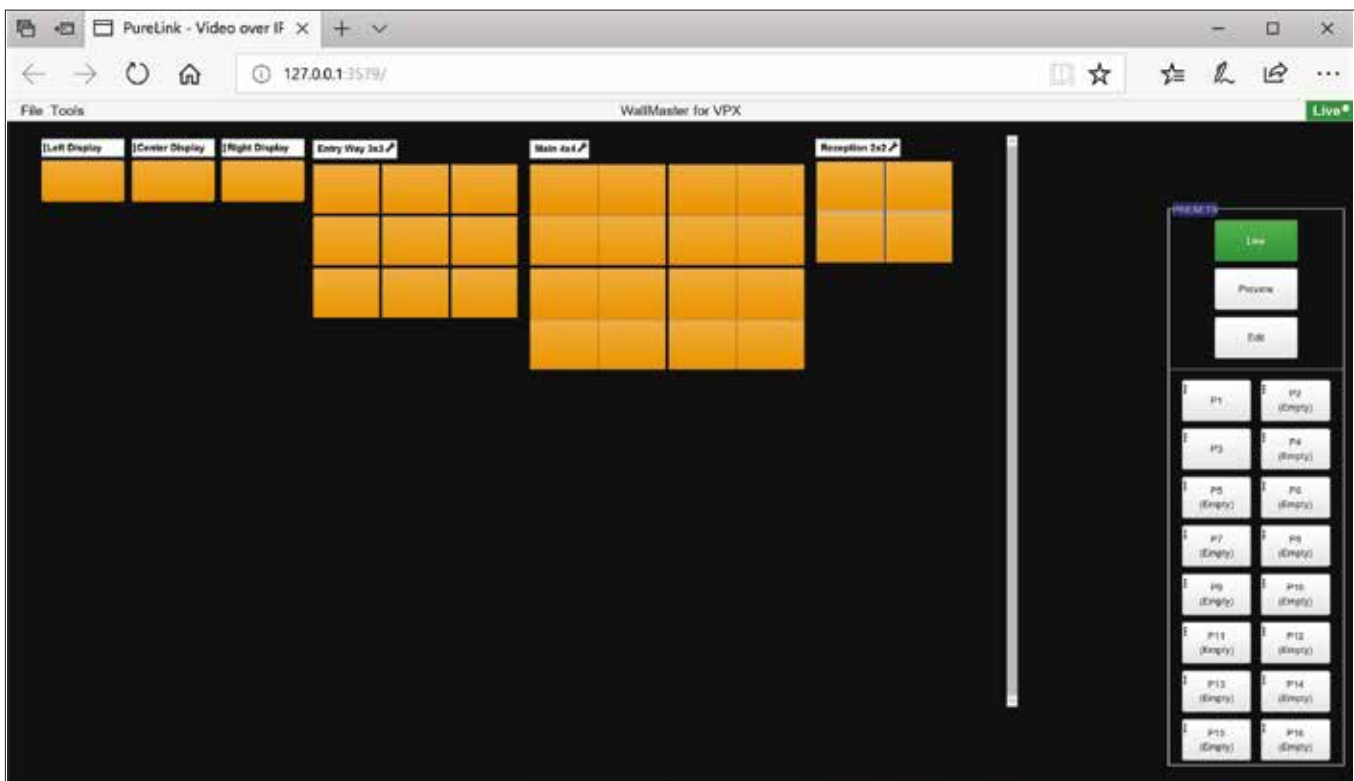
# VPX WALLMASTER™



The **VPX WallMaster™** Plug-in integrates advanced video wall processing capabilities to the VPX IP Management Software package.

## VIP WallMaster™ allows users to:

- Easily create multiple video wall arrays and display zone layouts
- Apply and re-configure layouts and sources on-demand
- Use VPX Preset Scheduler to call layout and input changes
- Call presets through API



## VPX COMMANDER

VPX IP Video Management Hardware Client



- Auto-run all versions of VPX IP Video Management Software
- Fast and simple system discovery and setup
- Intuitive system operation
- Comprehensive dynamic diagnostic reporting
- Access user interface wirelessly via iOS, Android, Mac, and Windows devices
- 24 / 7 / 365 operation
- 1U rack-mountable design

## NETWORK SWITCHERS

### VIP-NET-4804PP-1G

Managed L2+ 1G Media Hub w / PoE+



- 48 Port 1000Base-T, 4 Port 1000Base-X SFP
- (4) SFP+ Slots for 20G or 40G Interlink
- PoE+ (802.3 at) on all RJ45 ports
- PoE+ Port Configuration & Scheduling
- Built-in Device Management (DMS)



### VIP-NET-2404PP-1G

Managed L2+ 1G Media Hub w / PoE+



- 24 Port 1000Base-T, 4 Port 1000Base-X SFP
- (4) SFP+ Slots for 20G or 40G Interlink
- PoE+ (802.3 at) on all RJ45 ports
- PoE+ Port Configuration & Scheduling
- Built-in Device Management (DMS)



### VIP-NET-M3200

L2+ Modular 1G / 10G / 40G Video over IP Switch with PoE+



- Maximum 32x10G or 24x10G+2x40G
- Port-based IEEE802.1X authentication
- SNMPv1 / v2c / v3 for different levels of network management
- Support LLDP and CDP for network discovery protocols
- Redundant dual AC input power 100V to 240V



## NETWORK SWITCHERS

### VIP-NET-M28A

Layer 3 Modular Media Hub w / AVB



- Houses any combination of (4) CAT/ Fiber modules (up to 28 ports)
- Modules include: RJ45, SFP, SFP+, ST and SC
- Master clock synchronization between all connected devices
- AVB Technology delivers ultimate reliability and ultra-low latency



### VIP-NET-0802PP-1G

Managed L2+ 1G Media Hub

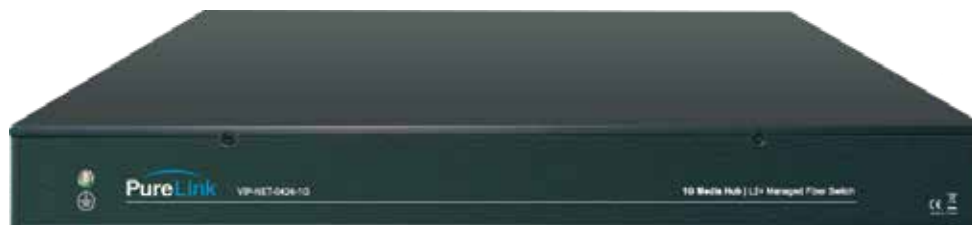


- 4 Port 1000Base-T, 24 Port 1000Base-X SFP
- 10Gbe SFP+ interlinks with LACP
- Rear-facing connections for improved rack installation
- Accepts AC or DC source power
- Rich API and Diagnostics
- Extensive security features



### VIP-NET-0424-1G

1G Media Hub – 24 Port 1000Base-X SFP,  
4 Port 1000Base-T, 4 Port 10GbE SFP+



- Purpose-designed for AV over IP applications; ready for use out of the box
- 10GbE SFP+ interlinks with LACP
- Rear-facing connections for improved rack installation
- Accepts AC or DC source power
- Rich API and Diagnostics



## NETWORK SWITCHERS

### VIP-NET-SFP+10G-MM-0.3

SFP+ 10G MM Module for SFP+ interlinks  
and VIP-NET 10G Media Hubs



- Gigabit Ethernet 1000BASE-SX @1.25G
- Compliant with IEEE802.3z Gigabit Ethernet
- Compliant with Fiber Channel 100-M5-SN-I
- Compliant with INF-8074i SFP MSA
- Hot pluggable

### VIP-NET-SFP+10G-SM-10

SFP+ 10G SM Module for VIP 10G Media Hubs



- Gigabit Ethernet 1000BASE-SX @1.25G
- Compliant with IEEE802.3z Gigabit Ethernet
- Compliant with Fiber Channel 100-M5-SN-I
- Compliant with INF-8074i SFP MSA
- Hot pluggable

## VIP-NET-SFP1G-MM-0.55

SFP 1G MM Module for  
VIP300H-U / T300H-U & VIP 1G Media Hubs



- Gigabit Ethernet 1000BASE-SX @1.25G
- Compliant with IEEE802.3z Gigabit Ethernet
- Compliant with Fiber Channel 100-M5-SN-I
- Compliant with INF-8074i SFP MSA
- Hot pluggable

## HUDDLE-CAM-400

4K Auto Tracking / Framing Camera,  
Soundbar, Microphone Solution



- 4K Auto Framing / Tracking Camera
- PTZ / ePTZ movement and High Quality Optics
- Beamforming / tracking microphone array
- Extension microphone (optional)
- Zoom Certified, Teams, GoToMeeting, and more
- Tracks and frames for single or multiple speakers
- Full function remote control
- HDMI and USB-C video / audio output



## VIP-CAM-100-NDI

3G-SDI IP Camera w / HDMI Output



- NDI HX output
- 5.8" CMOS sensor, 2.14-megapixel Full HD
- 20x High Performance Optical Zoom with 12x Digital Zoom (240x total zoom)
- Advanced PTZ (Pan-Tilt-Zoom) function for higher precision and reliability
- 3G-SDI output
- HDMI 1.3 output
- LAN multicast H.264 output
- VISCA, PELCO-D, PELCO-P control via RS232 / 485, http
- Minimum illumination .5 lux color, .1 lux BW
- Shutter speed 1 / 1 to 1 / 10,000
- White balancing
- DNR 2D and 3D
- Precision PTZ drive system
- Control via NDI
- Infrared remote control
- Smart AE technology (Automatic Exposure)
- Desktop / ceiling/wall mount options
- Create / recall up to 250 PTZ presets with remote control

## VIP-CAM-30-20x

USB 2.0 IP Camera w / HDMI Output



- 20x High Performance Optical Zoom w 8x Digital Zoom (160x total zoom)
- Advanced PTZ (Pan-Tilt-Zoom) function for higher precision and reliability
- USB 2.0, HDMI, RTSP and RTMP outputs
- VISCA, PELCO-D, PELCO-P control via RS232 / 485, http
- Minimum illumination .5 lux color, .1 lux BW
- Shutter speed 1 / 1 to 1 / 10,000
- White balancing
- DNR 2D and 3D
- Infrared remote control
- Smart AE technology (Automatic Exposure)
- Desktop / ceiling / wall mount options
- Create / recall up to 250 PTZ presets with remote control

## VIP-CAM-10-10x-USB2

USB 2.0 PTZ 10x Camera



- Full-featured USB 2.0 interface
- 1080p Full HD
- CMOS image sensor for superior low light image quality
- Use with Zoom, Teams, GoToMeeting, and more
- Controlled using VISCA / PELCO via RS-232 or remote control
- H.264 Slice / H.264 SVC encoding
- 10 programmable presets

## VIP-CAM-CTRL1

PELCO / VISCA Camera Controller



- Compatible with any PTZ cameras that uses PELCO or VISCA control
- 4D joystick for pan / tilt / zoom / focus control
- High brightness OLED display
- Auto backlight keys
- Shortcut keys customization
- Supports up to 255 cameras using PELCO; 7 cameras using VISCA

## SERVICE AND SUPPORT

PureLink offers industry-leading support services designed to handle the unique needs of each project. From system design to comprehensive technical support, our dedicated team of Service & Support professionals are trained to provide a consistently superior user experience.

### COMPLIMENTARY SYSTEM DESIGN

- Start a new design or upgrade an existing system
- Free system diagram and BOM

### DEDICATED TECHNICAL SUPPORT

- Team of technical experts
- Industry's fastest response times
- Gold & Platinum support packages

### PURELINK PROFESSIONAL SERVICES

- Pre-configuration services for VIP endpoints
- Warranty repairs and replacements
- Product evaluation program

### TRAINING & WEBINARS

- Free online education (tutorials, quick guides, and more)
- Live webinars featuring VIP/VPX CTS certification



View our VIP products here



**Website** [www.purelinkav.com](http://www.purelinkav.com)

**Email** [sales@purelinkav.com](mailto:sales@purelinkav.com)

**Phone** (201) 488-3232