

THOR

BROADCAST



16x16 3G SDI HD/SD-SDI Matrix Switcher

H-16x16SDI-MW-SW

The **Thor 16x16 SDI Switcher** is a 1RU easy to use, compact chassis that can enable you to easily use multiple SDI sources and output them in any arrangement you need. It includes multi format technology so it can auto detect multiple video format sources of SD/HD/3G-SDI (level A & B) and DVB-ASI signals at the same time and route the multiple video destinations in NTSC and PAL SD, 720,1080 at any frame rate.

Easy to use and setup; multiple options to manage the unit so you can use the switcher via the front panel, PC Software, and USB Keyboard. Includes mini 2" LCD view window to watch the current program you're queued in on.

Redundant Power means you will never to worry about the switcher going down during critical no fail applications.

Compact Design in a 1RU format please just a few inches wide means that you'll never have to worry about fitting it into your current rack. Amazing for small environments in production, mobile trucks, and theatrical AV.

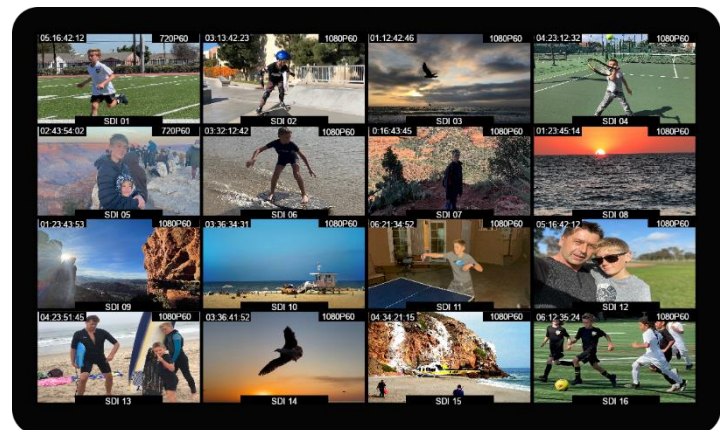
Features:

- Dual modes: 16-CH MultiViewer and 16•16 matrix switcher
- 16•SD/HD/3G-SDI auto-detected inputs
- 2 SDI & 1•HDMI MultiView scaling outputs with audio
- Full screen, and 20 preset MultiView layouts with clock display
- Time code, UMD, signal status and audio meter overlay Front panel buttons and knob control with Icd display Free PC control software via LAN port
- Dual power design, redundant power

16-Channel MultiViewer

H-16x16SDI-MW-SW is default as a 16-CH MultiViewer, and it is perfect for large installations because all 16 independent **3G-SDI inputs** signals output as a MultiView signal with audio, then you only need a single display to monitor all input signals simultaneously.

The **video format** of MultiView output can be selected from total 9 formats from **720p to 1080p**. Besides, 20 standard layouts with 16/12/11/10/9/8/6/4 preset in this device. You can even SOLO any input signal in full screen through the shortcut key.



Overlays

Each window is a completely independent video monitor with overlays that you can turn on and off.
For example, signal status, audio meters, UMD and time code.

Signal Status

Signal Status overlay conveniently displays the SDI input signal status of each window

Audio Meter

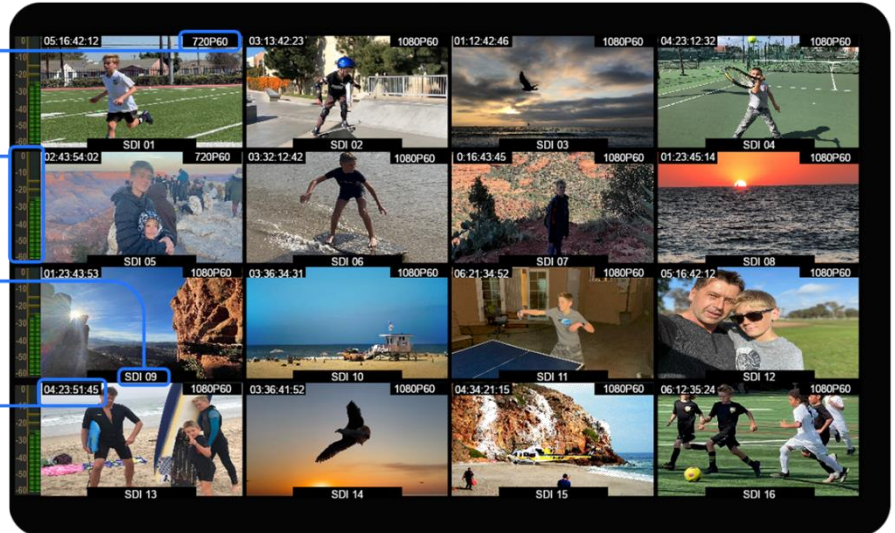
Each Window has a 2-channel audio meter overlay for monitoring the audio status, and you can choose 2 out of 16-channel embedded audio from SDI input signal.

UMD Overlay

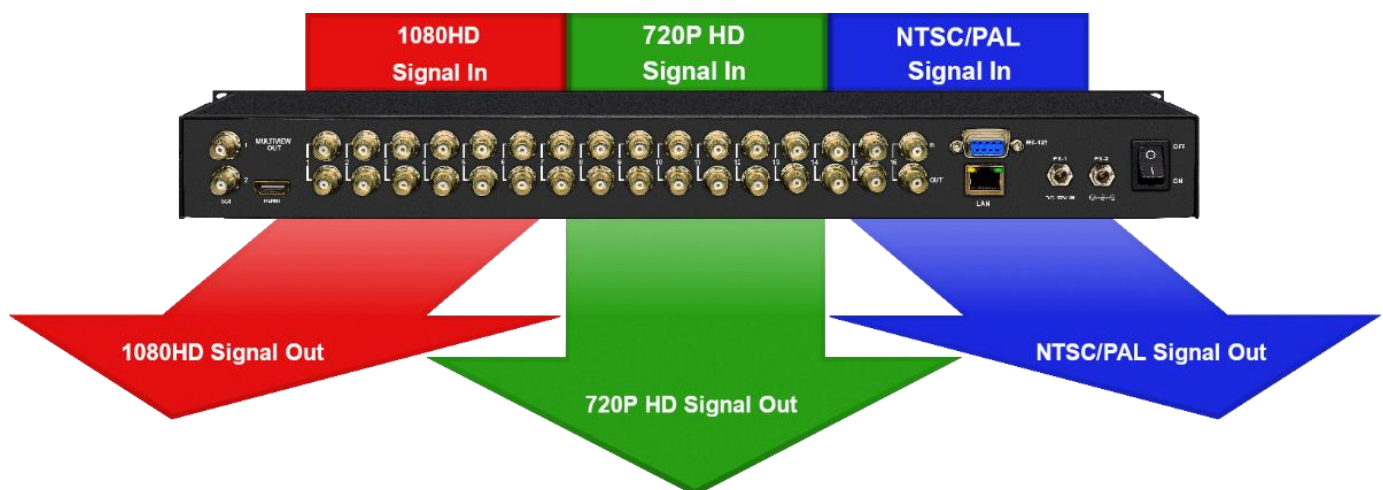
In each individual window, user can create custom UMD overlays up to 11 characters to indicate and mark the signal source information.

Time Code

Each window displays an independent time code of SDI input signal.



H-16x16SDI-MW-SW can be quickly configured to a 16x16 SDI matrix switches mode by the menu setting. Under matrix switcher mode, it is compatible with multiple format signal inputs in different resolutions and frame rates with auto detection technology.



Control Methods

H-16x16SDI-MW-SW is coming with a full control panel that almost all functions can be set through this panel via the dedicated buttons, menu knob and 2.2" LCD screen. And with the free PC software via Ethernet, user can control it on a windows PC conveniently.



Compact Design & Redundant Power

The use of premium components coupled with dual redundant power supplies ensures device works fine even when the Main Power supply encounters problems. And the super-compact 1RU design making a perfect fit for any live broadcast or post production, such as OB vans, broadcast control rooms and studios.



Specification:

MULTIVEIWER MODE	Inputs	SD/HD/3G-SDI x16
	Loop Outputs	SD/HD/3G-SDI •16
	Outputs	SDI •2, HDMI x
	SDI Input Format Support	920•1080p 60/59.94/50/30/29.97/25/24/23.98 920• 080PsF 30/29.97/25/24/23.98 920•1080i 60/59.94/50 1280•720p 60/59.94/50/30/29.97/25/24/23.98 625i 50 PAL, 525i 59.94 NTSC
	SDI/HDMI Outputs Format	1080p 60/50/30/25/24 1080i 60/50 720p 60/50
	SDI Auto Switching	Auto selects SD, HD and 3G-SDI on input
	SDI Video Rate	SD/HD/3G-SDI
	SDI Compliance	SMPTE 259M, SMPTE 292M, SMPTE 296M SMPTE 372M, SMPTE 424M
	Color Space and Precision	YUV 4:2:2/YUV 4:4:4/RGB 4:4:4 (SDI input)
		YUV 4:2:2 (MultiView HDMI/SDI output)
SWITCHER MODE	Inputs	SD/HD/3G SDI/DVB-ASI •16
	Outputs	SD/HD/3G—SDI/DVB—ASI•16
	SDI Format Support	2048•1080p 30/29.97/25/24/23.98 2048•1080PsF 30/29.97/25/24/23.98 1920•1080p 60/59.94/50/30/29.97/25/24/23.98 1920•1080PsF 30/29.97/25/24/23.98 920•1080i 60/59.94/50 280•720p 60/59.94/50/30/29.97/25/24/23.98 625i 50 PAL, 525i 59.94 NTSC
	SDI Auto Switching	Auto selects SD, HD and 3G-SDI on input
	SDI Video Rate	SD/HD/3G-SDI
	SDI Compliance	SMPTE 259M, SMPTE 292M, SMPTE 296M, SMPTE 352M SMPTE 372M, SMPTE 424M, SMPTE 425M, DVB-ASI
	Color Space and Precision	YUV 4:2:2/YUV 4:4:4/RGB 4:4:4/XYZ 4:4:4
	CONTROLS	Control
LAN (Software control and update)		
RS-422 (Software control)		

POWER	Power Connector	Threaded locking connector
	Voltage Range	DC 12 20V
	Power Supply	PS-1, PS-2, power redundancy
	Power Consumption	36W
ENVIRONMENT	Operating Temperature	0°C~60°C
	Storage Temperature	-30°C~70°C
	Relative Humidity	0%~90% non-condensing
SIZE	Size	Standard 19" 1 rack unit
	Weight	2kg
PACKING	What's Included	H-16x16SDI-MW-SW 16 Channel 3G-SDI MultiViewer with Switcher
		DC 12V 5A power adapter
WARRANTY	Warranty	3 year limited warranty