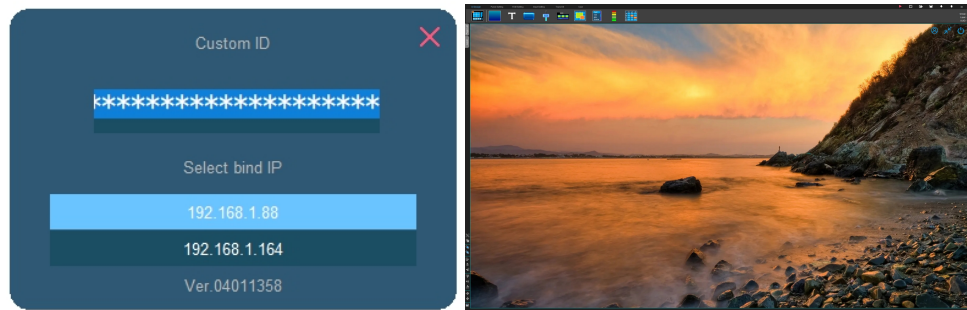


UI Designer Software Operation Guide

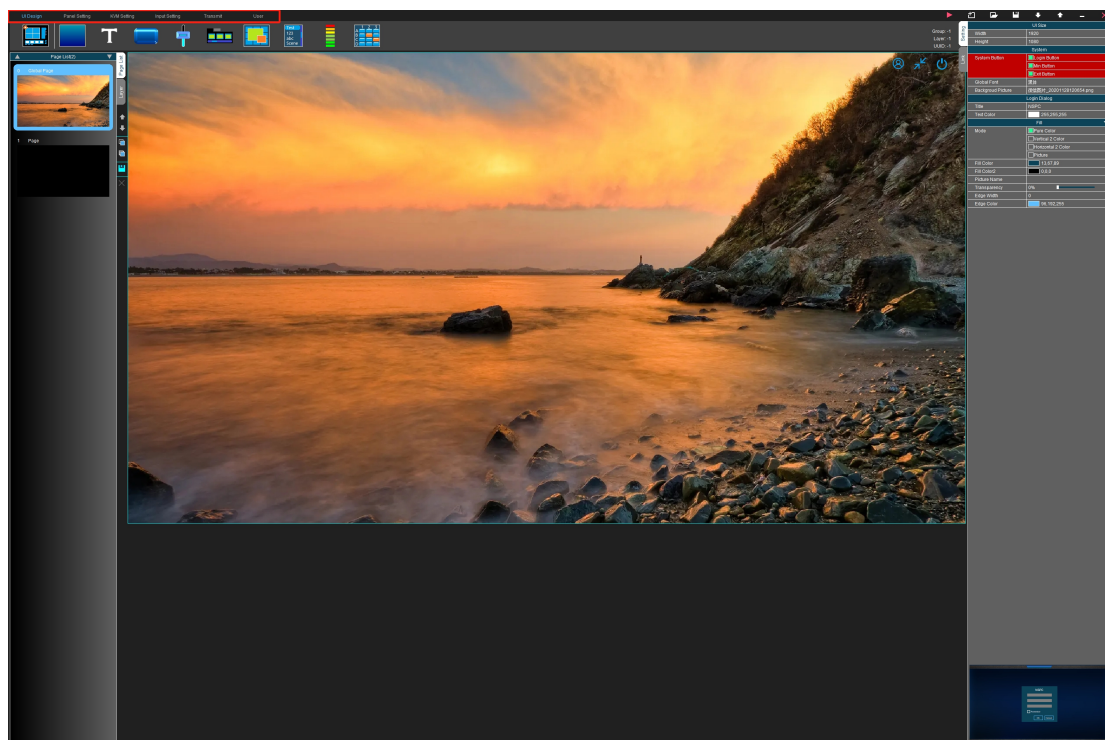
This software is mainly for PC and Tablet control UI designing, this system can support users to customize the UI accordingly.

data	2022/4/1 19:40
pic	2022/4/1 14:08
language_en	2022/4/1 14:00
NSPCDesigner	2022/4/1 13:58
set	2022/4/3 14:57

Step 1: Double click to run the software and make sure the computer is connected to the same network as the AV over IP system. Choose the right computer IP address, it will automatically login the software:

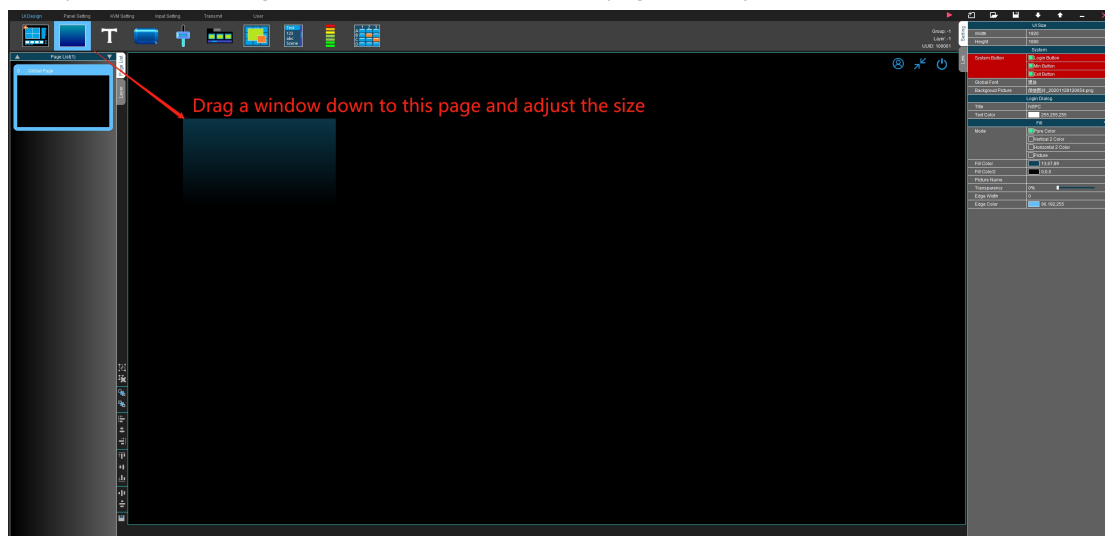


Step 2: It will show the UI design homepage, users can do the designing here by simply drag the icons to make it.

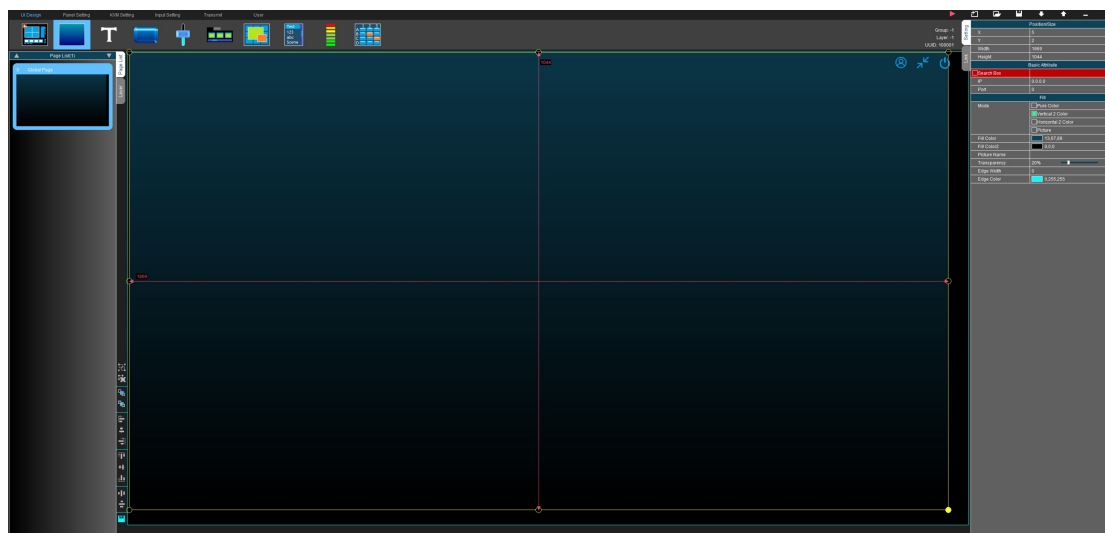


UI design interface: Users can do the designs here start from the Homepage(0), it can't be deleted, but users can change the pictures from the right side.

Firstly will need to drag a window down to the homepage and adjust the size



Adjust the window size:



Click the box after the picture name, it will popup the window to select the customizing image:



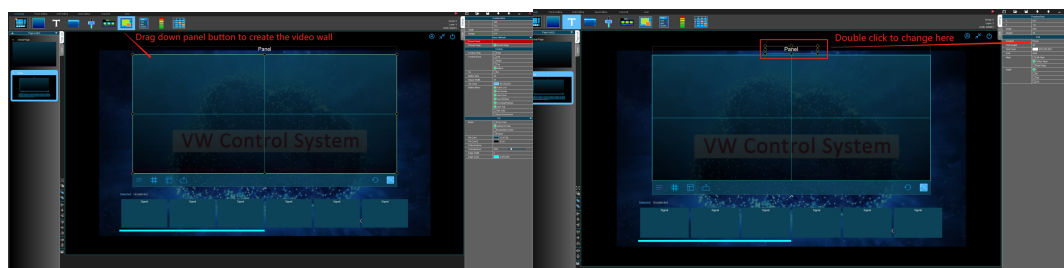
After done the homepage design, click to add a new page:



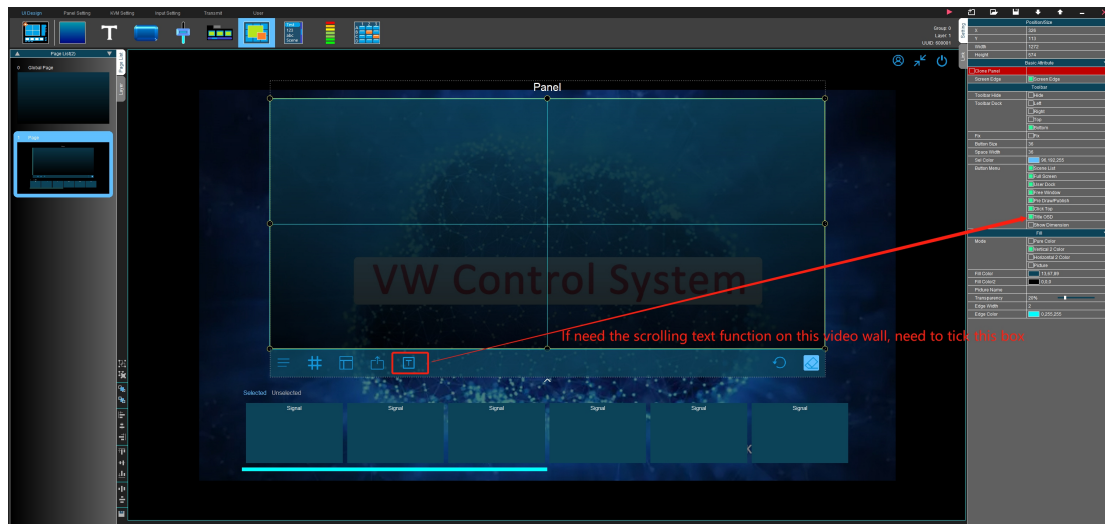
Then users can design a video wall, add the source on this page, here take example to make a 2x2 video wall and adding the input signals:
 Drag the input signal bar:



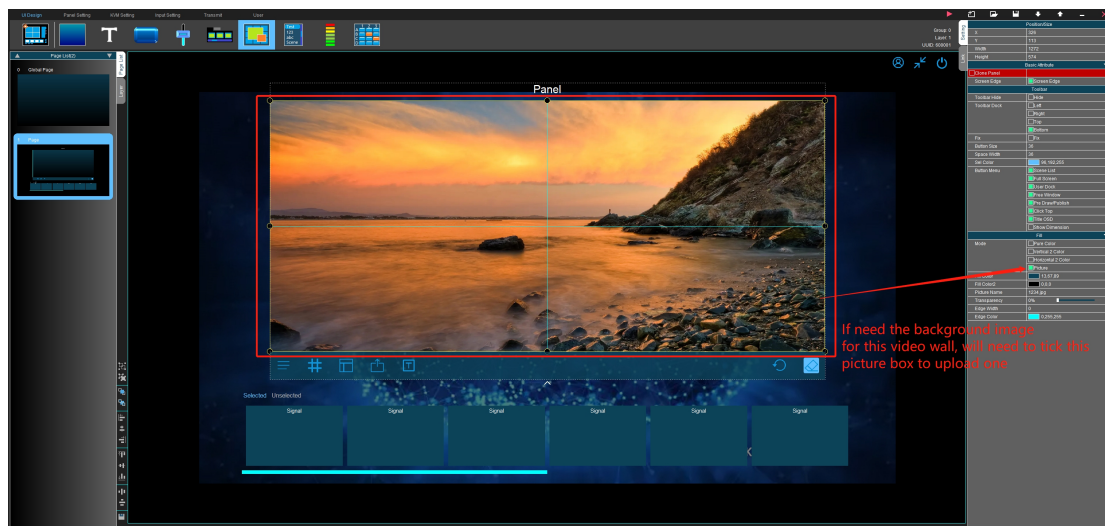
Drag the panel button to create the video wall, and the panel number can be changed from the right side:



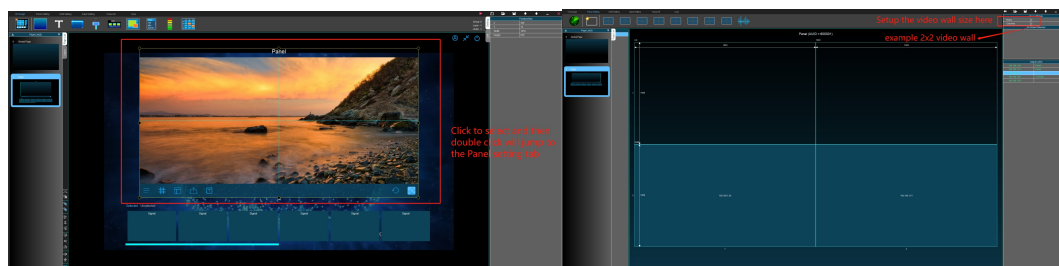
If need the scrolling text function on the video wall, need to tick this box on the right side:



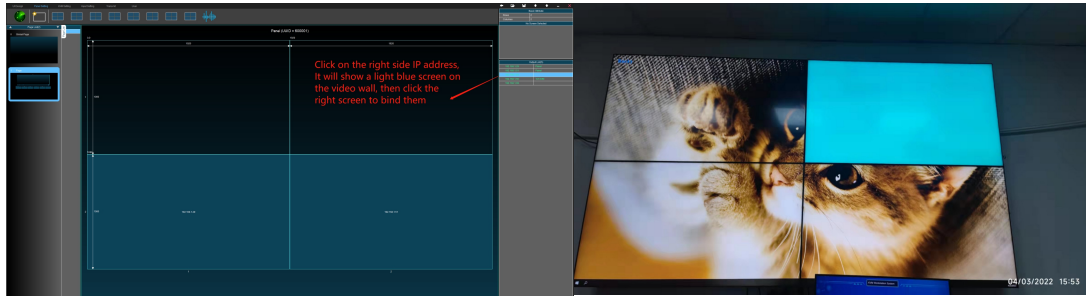
If need the background image, will need to tick this box and upload a picture:



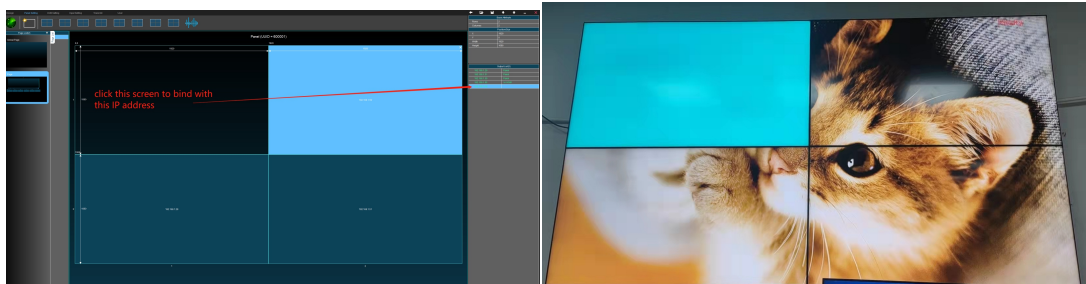
Now select the video wall box and double click it, then it will jump to the Panel setting tab for users to setup video wall size and bind the video wall screens with the receivers:



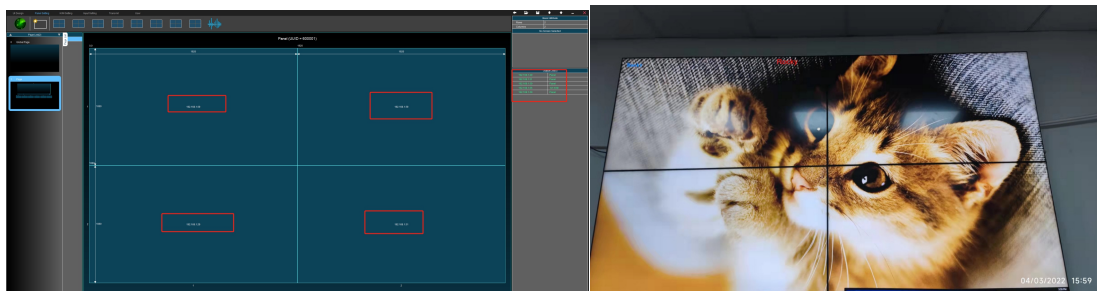
After have the video wall size setup, then users to click the IP address of the receivers to bind the screens with the receivers, it will show a light blue screen on the Video wall, then just click the right screen:



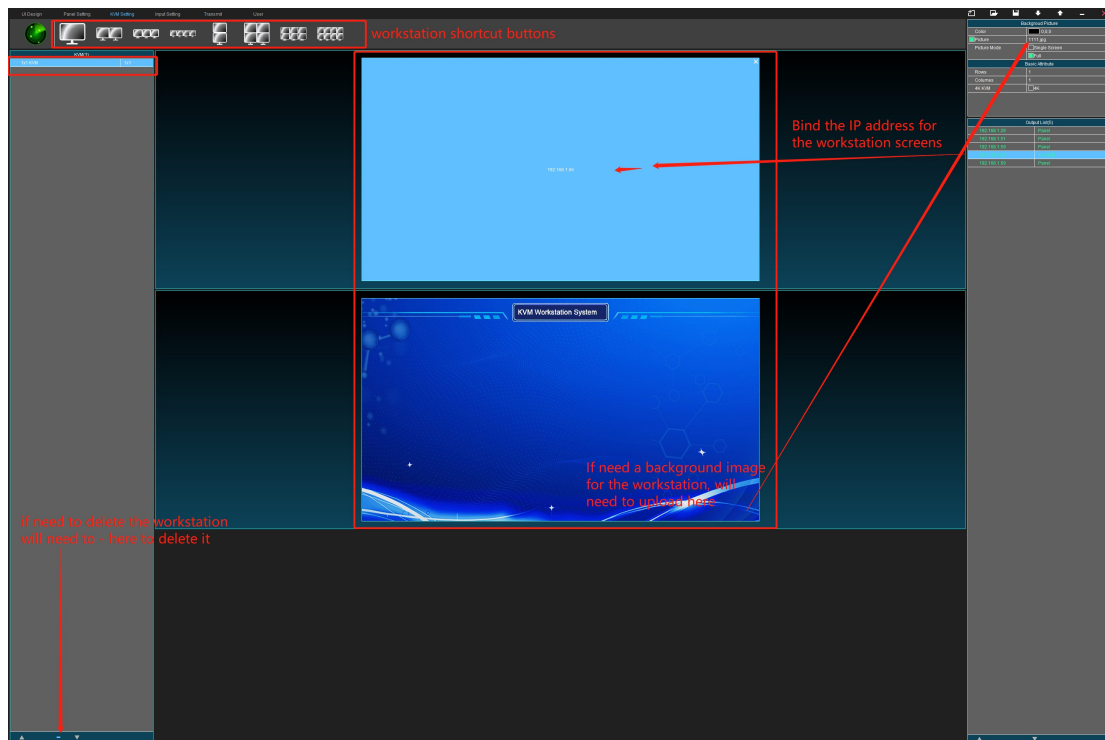
With this light blue lights on the screen, it will just like the outputs mapping:



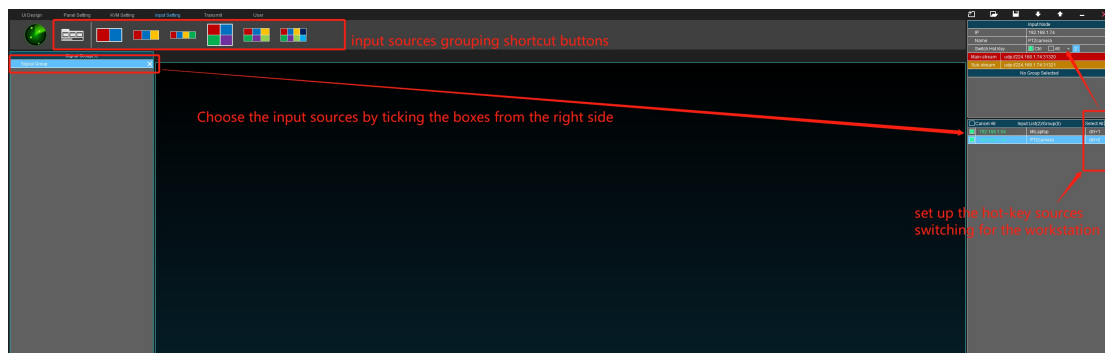
After all the video wall screens bind with the IP address, each screen will have an IP address on it:



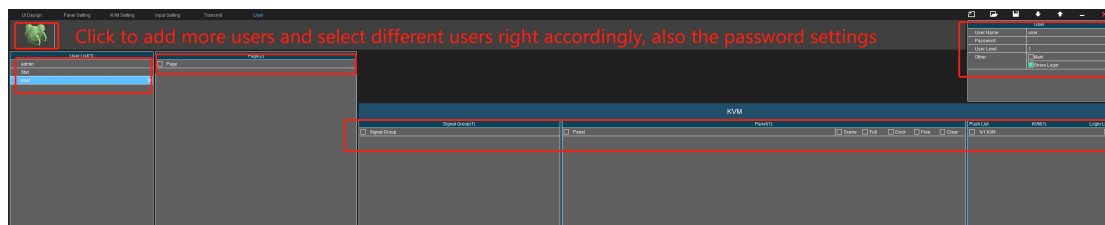
KVM workstation: for the KVM workstation is allow users to control the multiple inputs sources by one keyboard and mouse, it can support the mouse roaming when the workstation has multiple screens, and users also can customize the workstation background image here by ticking the picture name box to upload one



Inputs settings: to select the specific sources for the input groups and set the hot-key switching for the workstation:



User tab for adding the users with different rights, name and password:



Link the signal groups with signal bar on the UI design tab:



After all the above designing and setting done, users now can upload it to the control system, this process may take about 1 min:

