

User Manual

WolfPack 16X1 HDMI 2.1 Multiviewers

Scaler output
Seamless switch
8K@60Hz output
IP/RS232 Control
HDTVSW161H21-MV

Make Installation Easy

OVERVIEW

This product is a 16 in 1 out HDMI Multiviewers and it support 8K@60Hz output and HDCP2.3. The single view switching mode supports seamless switching between 16 signals. Group view mode can be displayed in 2X2 mode, and each group can also be switched between. Multi view mode can display 16 screens at the same time. Scaler output can compatible with different TVs. HDMI output allows you to select sound from any of the HDMI inputs.

The product can be controlled by front panel buttons, RS232, and IP/web UI. Also we provide API commands for your control system.

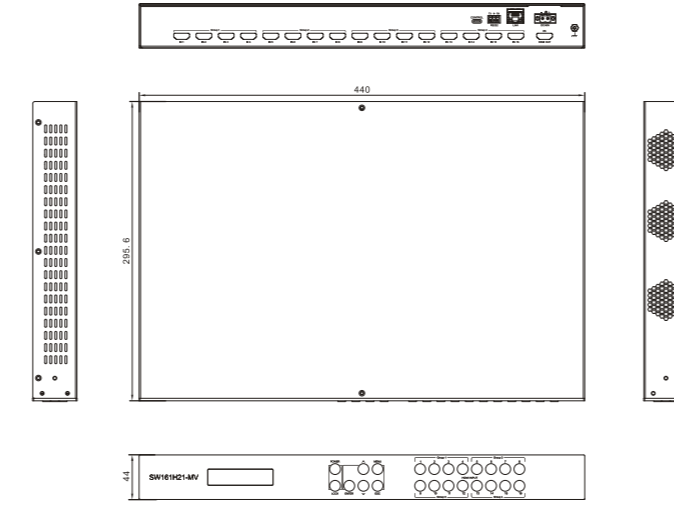
It is ideal for applications such as Home theatre, offices, school, conference rooms, shopping malls, hotels and museums, which require manage multiple sources and and display multiple sources on a single displays.

FEATURES

- HDMI out support 8K@60Hz.
- 16 HDMI inputs and Support HDMI2.0 with 4K@60Hz HDR and HDCP 2.2 compliant.
- Support 2X2 multi view and 4x4 multi view.
- Support seamless switch.
- Support button, RS232, IP control, PC GUI control.
- Support EDID manage.
- Support signal retiming, No loss of quality.
- No driver required, Plug and play, Installs in minutes.

System update

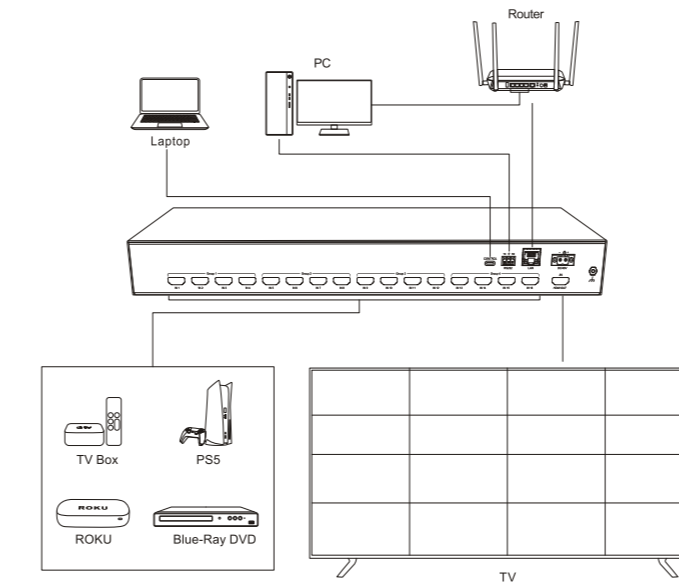
PRODUCT DIAGRAM



Package Accessories:

- 1 HDMI Multiviewers x1
- 1 Power supply x1
- 2 Mount ear x2
- 1 product manual x1
- 1 IR remote x1

INSTALLATION



Operating and Connecting:

1. Connect 16 HDMI2.0 cables from each HDMI source devices to HDMI input.
2. Connect one HDMI2.1 cable from display (monitor or projector) to the HDMI output.

IP CONTROL

You will get the IP address of the matrix in the LCD manual. Make sure your PC and the matrix on the same network.

Typing in the IP address in a browser

Note: please begin with http://

e.g: You get a IP address 192.168.1.239

please typing in http:// 192.168.1.239

And you will see three sections



VIDEO SETTING

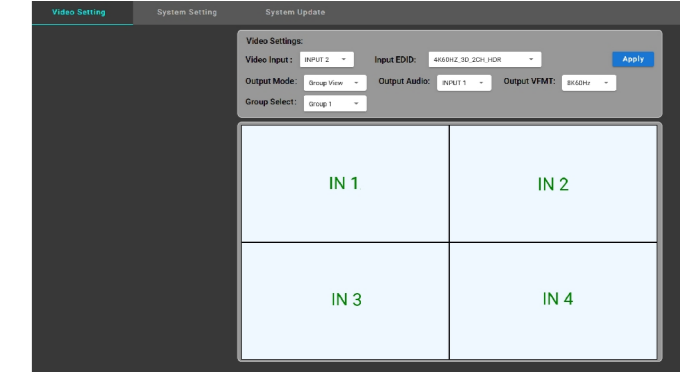
Single view mode

- Video input: Video input selection
- Input EDID: HDMI Input EDID setting
- Output Mode: Output mode selection
- Output Audio: Output audio selection
- Output VFMT: output resolution selection
- Click on IN1 to display the next screen



Group view mode

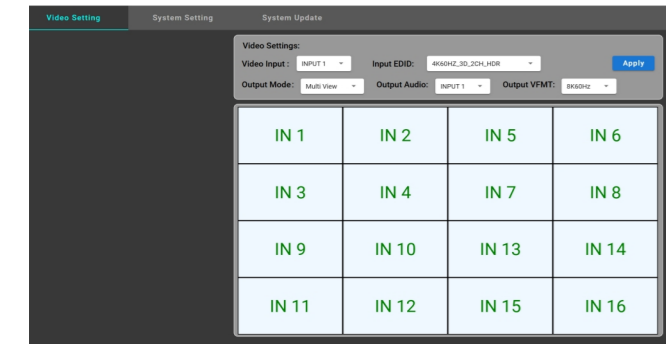
- Group Select: Group display selection



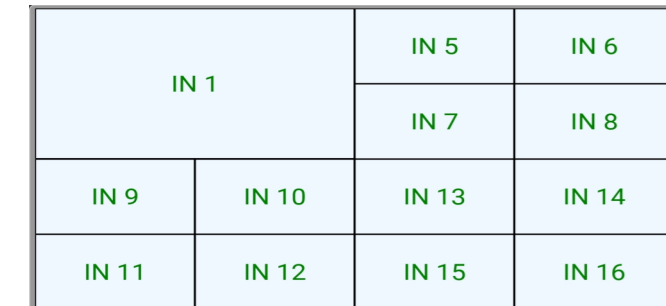
- Double click on IN1/2/3/4 and it goes full screen, Double clicking again will restore the 2x2 display
- At full screen click on IN1 to display the next screen



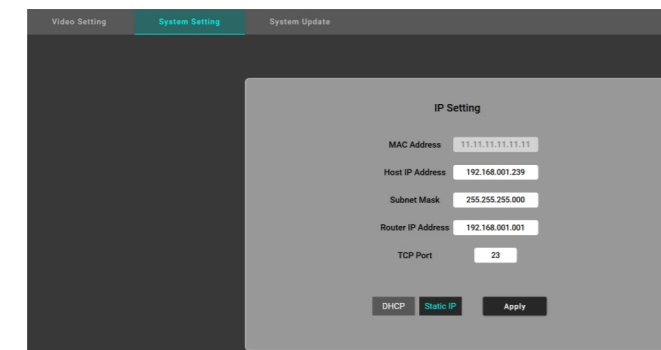
Multi view mode



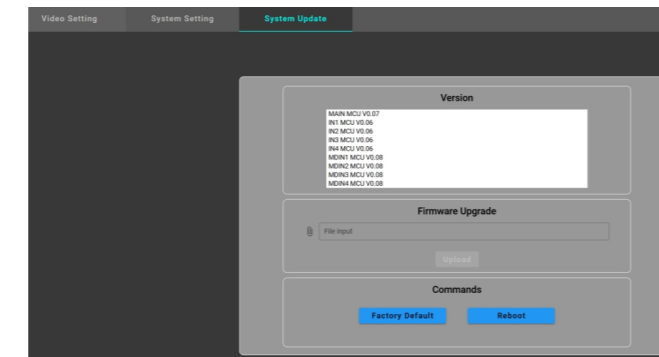
- Double click on IN1~16 and it will be displayed on 1/4 screen, Double clicking again and it will goes full screen. Double clicking again returns the 1/4 display, double clicking again returns the 1/16 display
- At 1/4 screen and full screen click on IN1 to display the next screen



SYSTEM SETTING, SET IP ADDRESS



SYSTEM UPDATE



SPECIFICATIONS

HDMI version	HDMI 2.0/2.1	HDCP version	HDCP2.2/2.3
HDMI resolution	8K@60Hz/4K@60Hz/1080P@60Hz	Support colour depth	24bit/30bit, 36bit deep color
Audio format	5)DTS-5.1/DTS-HD/Dolby-5.1/PCM		
Input/Output TMDS signal	0.5~1.5Volts p-p(TTL)	Max bandwidth	600MHz
Input/Output DDC signal	5Volts p-p (TTL)	Max working current	3A
Power adapter format	Input AC (50HZ, 60HZ) :100V-240V; Output: DC48V/3A	Max baud rate	6Gbps
Operating Temperature range	(-15 to +55°C)	Operating Humidity range	5 to 90%RH (No Condensation)
Dimension (LxWxH)	440*295.6*44(mm)	Weight	3Kg

NOTES

Please use this machine based on below instructions to keep longer lifetime.

1. The machine should be placed at the spot far away from the Damp, High-Temperature, Dusty, Erosive, and Oxidant environment.
2. All parts will be free from the strong shake, hit, fall.
3. Touching the device with the wet hands is prohibited.
4. Please turn power off when machine is not used for long time.
5. Please do not open the cover and do not touch the inside parts.
6. Please use the original factory power adaptor.
7. Before power on, please check the connection cable carefully. And make sure that all interfaces are normally connected.