

# User Manual

## WolfPack 4x4 HDMI 2.0 Matrix

4x4 HDMI 2.0 Matrix  
Seamless switch&video wall  
Scaler output  
Coaxial audio output  
4K@60 4:4:4  
IP/RS232/IR Control  
HDTVAS1MH44HTG22-GS

Make Installation Easy

## OVERVIEW

This product is a 4 in 4 out HDMI Matrix with Ultra HD up to 4k60 HDR and HDCP2.2. It reliably distributes four HDMI source signal to four HDMI displays. And also provide audio de-embedded via coaxial port for each HDMI port. Scaler output can compatible with different TVs, Support seamless switch & video wall & audio delay.

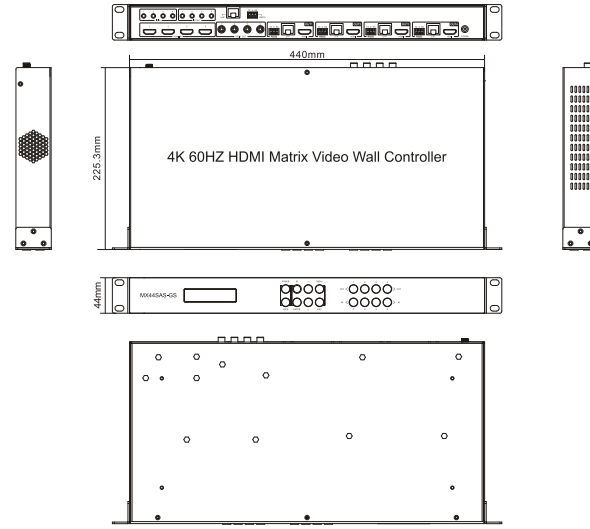
The product can be controlled by front panel buttons, IR, RS232, and IP/web UI. Also we provide API commands for your control system.

It is ideal for applications such as Home theatre, offices, school, conference rooms, shopping malls, hotels and museums, which require manage multiple sources and distribute an HDMI source signal to multiple displays.

## FEATURES

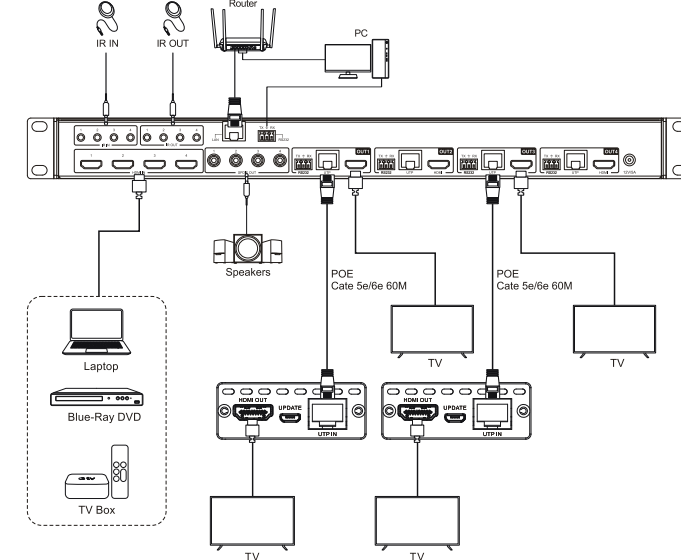
- Distributes four HDMI sources signal to four HDMI displays.
- Support HDMI2.0 with 4K@60 HDR and HDCP 2.2 compliant
- Support 2X2 video wall,fast switch.
- Support remote control, button, RS232, IP control,PC GUI control.
- Support Audio DE-embed.
- Support UTP out up to 60M.
- Support signal retiming, No loss of quality
- No driver required, Plug and play, Installs in minutes

## PRODUCT DIAGRAM



- Package Accessories:**
- ① HDMI Matrix x1
  - ② Power supply x1
  - ③ Mount Ear x2
  - ④ HOOK&LOOP x2
  - ⑤ Reusable Cable Ties x2
  - ⑥ User Manual x1
  - ⑦ IR remote x1

## INSTALLATION

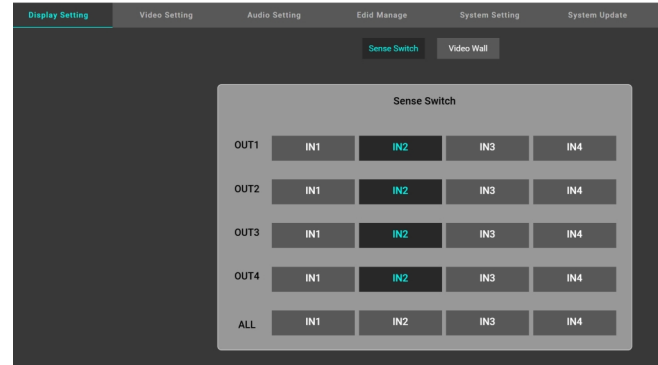


Operating and Connecting:  
1.Connect one HDMI cable from each HDMI source devices to HDMI input.  
2.Connect one UTP cable from receiver UTP input to the MATRIX HDMI UTP output.  
3.Connect one HDMI cable from each display (monitor or projector) to the receiver HDMI output.

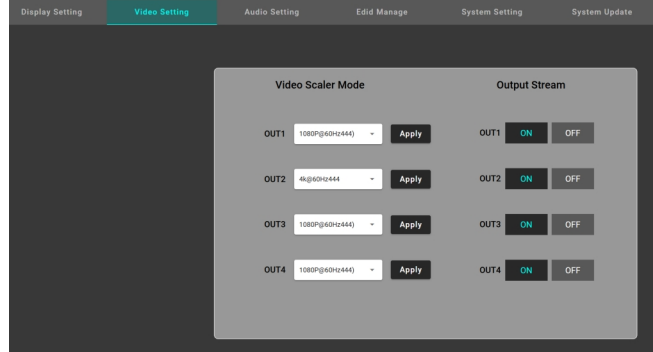
## IP CONTROL

You will get the IP address of the matrix in the LCD manual. Make sure your PC and the matrix on the same network. Typing in the IP address in a browser  
Note: please begin with http://  
e.g: You get a IP address 192.168.1.239  
please typing in http:// 192.168.1.239  
And you will see four sections

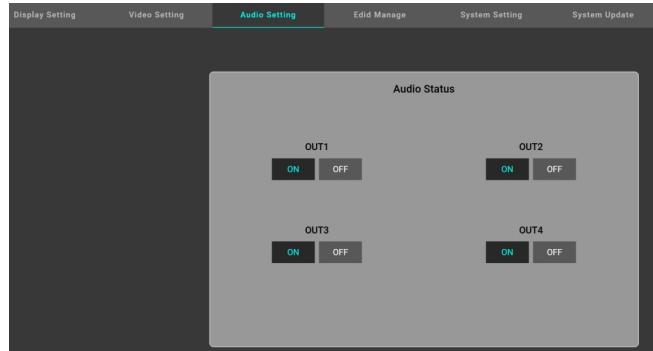
Sense Switch, select inputs for each output.



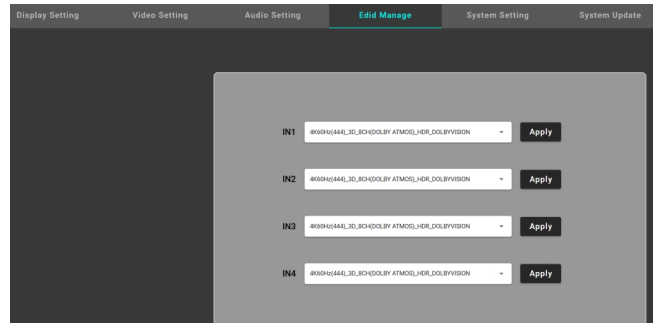
## Video setting



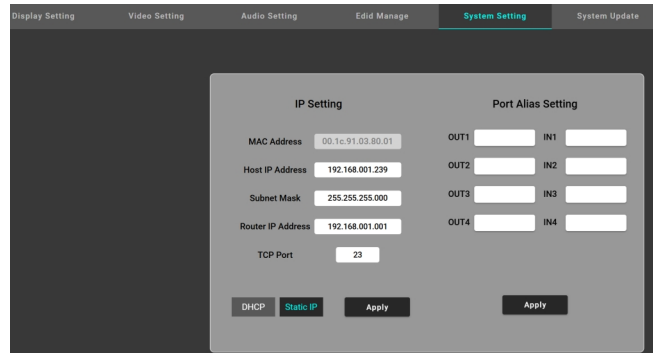
## Audio Setting, turn on/off audio breakout



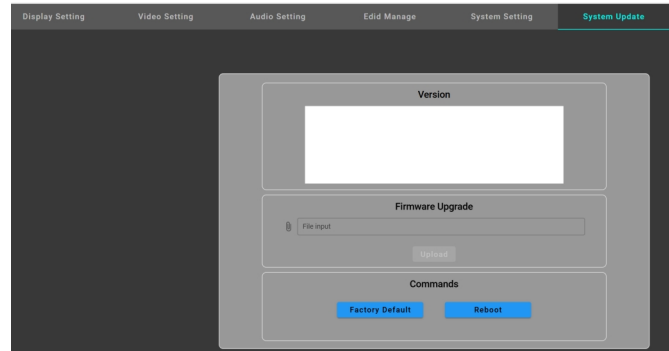
EDID Manage, select EDID for each input, there are more than 10 kinds of EDID options.



System setting, set IP address and alias name.



## System update



## SPECIFICATIONS

HDMI verion	HDMI 2.0	HDCP version	HDCP 2.2
HDMI resolution	4K*2K/1080p/1080i/720p	Video format	24bit/30bit,36bit deep color
Support audio format	DTS-5.1/DTS-HD/Dolby-5.1/Dolby Atmos		
Input/Output TMDS signal	0.5~1.5Volts p-p(TTL)	Max bandwidth	600MHz
Input/Output DDC signal	5Volts p-p (TTL)	Max working current	3.5A
Power adapter format	Input : AC (50HZ/60HZ) 100V-240V; Output: DC12V/5A	Max baud rate	6Gbps
Operating Temperature range	(-15 to +55℃)	Operating Humidity range	5 to 90%RH (No Condensation)
Dimension (LxWxH)	440*225*43(mm)	Weight	3Kg

## NOTES

Please use this machine based on below instructions to keep longer lifetime.

1. The machine should be placed at the spot far away from the Damp, High-Temperature, Dusty, Erosive, and Oxidant environment.
2. All parts will be free from the strong shake, hit, fall.
3. Touching the device with the wet hands is prohibited.
4. Please turn power off when machine is not used for long time.
5. Please do not open the cover and do not touch the inside parts.
6. Please use the original factory power adaptor.
7. Before power on, please check the connection cable carefully. And make sure that all interfaces are normally connected.