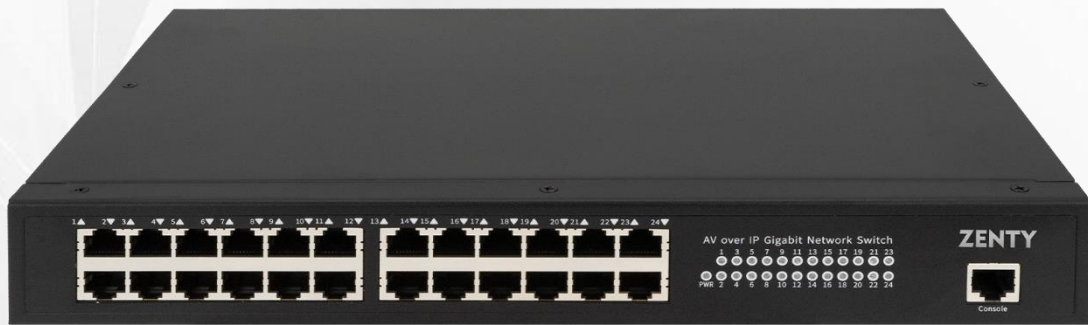




Zenty | Professional A/V Solution Provider

User Manual [v1.0]



24 PORT GIGABIT ETHERNET SWITCH

ZT-105 | ZT-IPS24

ZENTY®

9807 EMILY LANE

STAFFORD, TX 77477

(844) 200-1945

SALES@ZENTY.COM

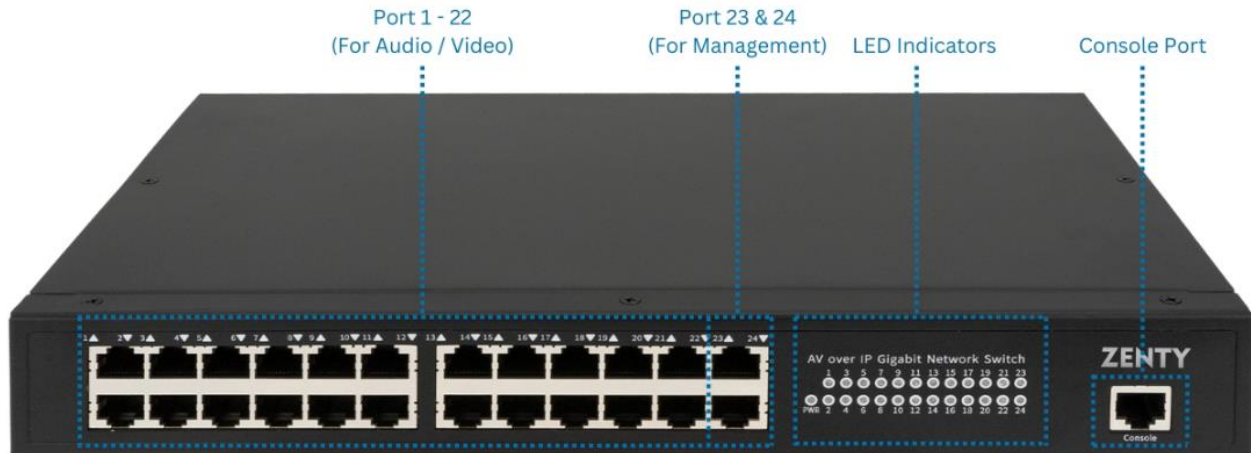


Table of Contents

- 1. Introduction 3
- 2. Key Features 3
- 3. Package Contents 4
- 4. Specifications 4
- 5. Maintenance..... 6
- 6. Warranty 6
- 7. Mail-In Service 6
- 8. Limited Warranty Limits and Exclusions..... 6

1. Introduction

The ZENTY ZT-IPS24 provides 23 ports for you to customize as input or output ports (23 and 24 are for management by default), and ultimately custom tailor your own AV over IP matrix. Use the ZT-IPS24 as a standalone matrix or integrate the switch in to your existing network. Making routing changes and creating routing presets has never been easier with the new and improved web GUI interface.



Default switch IP: **192.168.168.254**



2. Key Features

- ❖ 23 customizable ports as Inputs or Outputs | Port 24 for Management
- ❖ Specifically designed to improve AV data transmission and reception
- ❖ Gigabit Data Transfer Rate | 2000 Mbps
- ❖ Automatic VLAN creation for a many – many setup
- ❖ Supports Unknown Unicast / Broadcast / Multicast Storm Control
- ❖ Control via web GUI or Zenty Control App (available on Google Play and App Store)
- ❖ Control 4 and Crestron Drivers Available

3. Package Contents

- ❖ 1 x Zenty ZT-IPS24 Switch
- ❖ 2 x Rackmount Ears
- ❖ 1 x Power Cord
- ❖ 1 x User Manual

4. Specifications

Hardware Specifications	
Ethernet Port	24 x 1000 Base-T RJ45
Optical Port	4 x SFP (Can be modified to 4 x 1000 Base-T RJ45, or combo)
Control Port	1 x RJ45 – RS232 Serial Port (115200, 8, N, 1)
OOB Port	1 x 10/100 Base-TX RJ45 (only for web management)
Init Key	Press to restart Press and hold for 5 seconds for Default Recovery
Data (Alarm) Input/Output	2 x Digital Input for external alarm 2 x Digital Output for switch power failure cable link down and PoE link off Signal type: normal – open or normal – closed from relay
Standard	IEEE802.3, IEEE802.3u, IEEE802.3ab, IEEE802.3z, IEEE802.3X, IEEE802.1Q, IEEE802.1p, IEEE802.3ad, IEEE802.1d, IEEE802.1X
Exchange Capacity	56Gbps / non-blocking
Package Conversion rate	95.2Mbps @ 64bytes
Exchange Mode	Store and forward
Package Data Cache	4.1Mbit
Mac Address List	8K
Jumbo Frame	10k bytes
EMI	FCC Part 15, CISPR (EN55022) Class A
EMS	Surge level – 4 execute: IEC61000-4-5 ESD level – 4 execute: IEC61000-4-2 RS level – 4 execute: IEC61000-4-3 EFT level – 4 execute: IEC61000-4-4 CS level – 3 execute: IEC61000-4-6 M/S level – 5 execute: IEC61000-4-8

Software Specifications:	
Supported Functions:	
❖ 802.1p COS/DSCP/TOS priority	
❖ IGMP Snooping	
❖ MLD Snooping	
❖ Multicast VLAN Registration (MVR)	
❖ IP, MAC, port VLAN binding combinations	
❖ IPv4 static route setup	
❖ Static ARP Add, Delete, Burn-in time setup/check	
❖ Group-broadcasting PIM, IGMP V1 / V2 / V3, MLD (IPv4)	
❖ Relay repeater, DHCP snooping	
❖ Duplex transfer check mechanism	
❖ Default switch IP: 192.168.168.254	

Power	
Power Supply	Dual Mode AC 100 – 240V 50/60Hz DC 12V 3A
Power Consumption	36W

Environmental	
Operating Temperature	-40–75 °C
Storage Temperature	-40–85 °C
Size (L x W x H)	440mm x 205mm x 44mm
Weight	4kg

Dimensions and Weight	
Length	440mm / 17.33in
Width	205mm / 8.07in
Height	44mm / 1.73in
Weight	4kg / 8.8lbs

Regulatory	
Safety and Emission	CE FCC ROHS

5. Maintenance

Clean this unit with a soft, dry cloth. Never use alcohol, paint thinner, or benzene to clean.

6. Warranty

If your product does not work properly because of a defect in materials or workmanship, our company (referred to as “the warrantor”) will, for the length of the period indicated as below, “Parts and Labor (5) Years”, which starts with the date of original purchase (“Limited Warranty period”), at its option either (a) repair your product with new or refurbished parts, or (b) replace it with a new or a refurbished product. The decision to repair or replace will be made by the warrantor.

During the “Labor” limited warranty period, there will be no charge for labor. During the “Parts” warranty period, there will be no charge for parts. You must mail-in your product during the warranty period. This Limited Warranty is extended only to the original purchaser and only covers products purchased as new. A purchase receipt or other proof of original purchase date is required for Limited Warranty service.

7. Mail-In Service

When shipping the unit, carefully pack and send it prepaid, adequately insured, and preferably in the original carton. Include a letter detailing the complaint and provide a day time phone and/or email address where you can be reached.

8. Limited Warranty Limits and Exclusions

This Limited Warranty ONLY COVERS failures due to defects in material or workmanship, and DOES NOT COVER normal wear and tear or cosmetic damage. The Limited Warranty ALSO DOES NOT COVER damages which occurred in shipment, or failures which are caused by products not supplied by warrantor, or failures which result from accidents, misuse, abuse, neglect, mishandling, misapplication, alteration, faulty installation, set-up adjustments, mis-adjustment of consumer controls, improper maintenance, power line surge, lightning damage, modification, or service by anyone other than a Factory Service center or other Authorized Servicer, or damage that is attributed to acts of God.

THERE ARE NO EXPRESS WARRANTIES EXCEPT AS LISTED UNDER “LIMITED WARRANTY COVERAGE”. THE WARRANTOR IS NOT LIABLE FOR INCIDENTAL OR CONSEQUENTIAL DAMAGES RESULTING FROM THE USE OF THIS PRODUCT, OR ARISING OUT OF ANY BREACH OF THIS WARRANTY. (As examples, this excludes damages for lost time, cost of having someone remove or re-install an installed unit if applicable, travel to and from the service, loss of or damage to media or images, data or other recorded content. The items listed are not exclusive, but are for illustration only.) PARTS AND SERVICE, WHICH ARE NOT COVERED BY THIS LIMITED WARRANTY, ARE YOUR RESPONSIBILITY.



WWW.ZENTY.COM

9807 EMILY LANE

STAFFORD, TX 77477

(844) 200-1945

SALES@ZENTY.COM